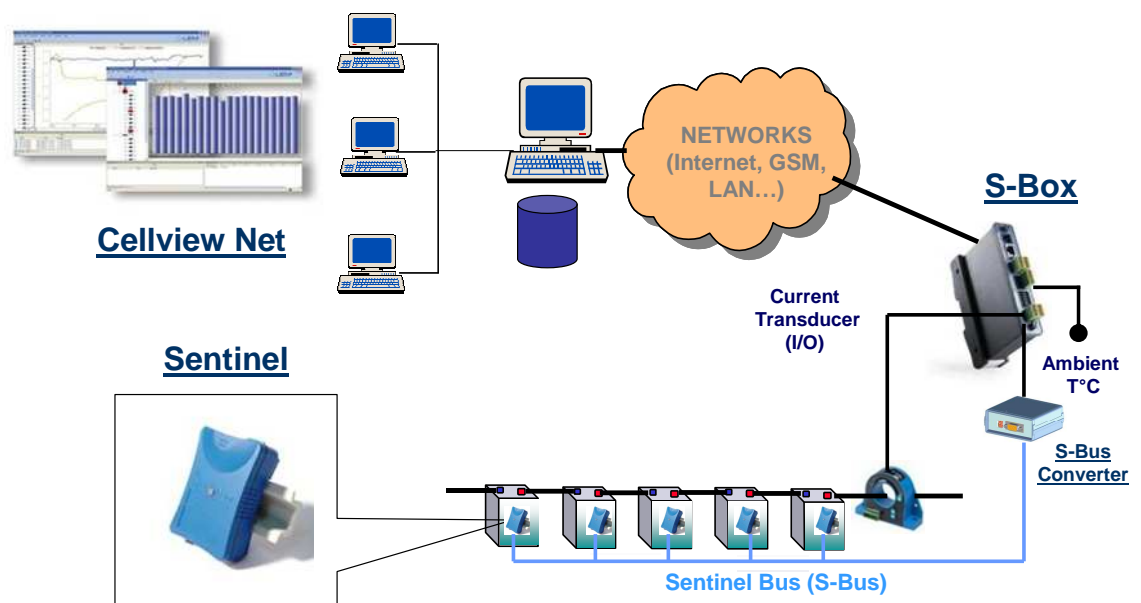


Battery Monitoring Selection Guide

S-Box

The LEM's Sentinel solution is a complete data acquisition kit for permanent battery monitoring with different components as below:



Sentinel 3:



Reference Name	Description	LEM Code
Sentinel 3	A Sentinel 3, is integrated with the cell or monobloc to measures terminal voltage, cell temperature and cell impedance of a 2V to 12VDC cell	90.F5.99.000.0

S-Box:



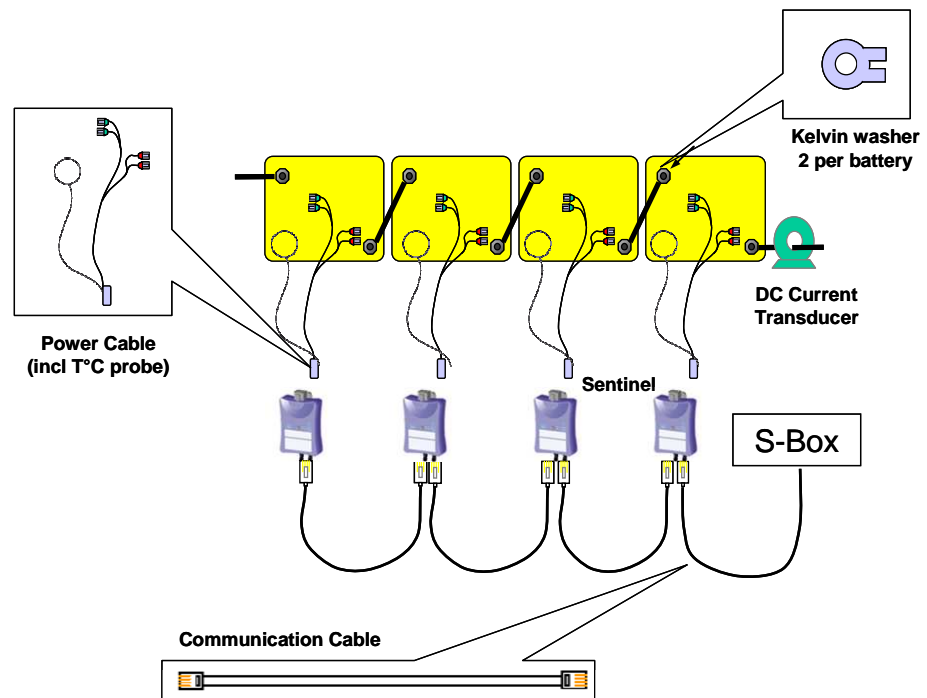
Reference Name	Description	LEM Code
S-Box	The S-Box provides all the functions required to analysis and store the measurement data from the Sentinel 3 units and connection to a PC via a RS485 port or Ethernet	S2.00.98.000.0

S-BUS Converter:

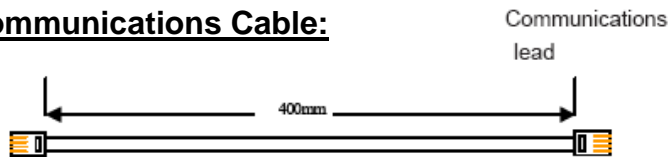


Reference Name	Description	LEM Code
S-BUS Converter S3	The S-Bus converter provides a communication link between the S-Bus and a PC via a RS232 port	90.E8.98.004.0

Accessories:

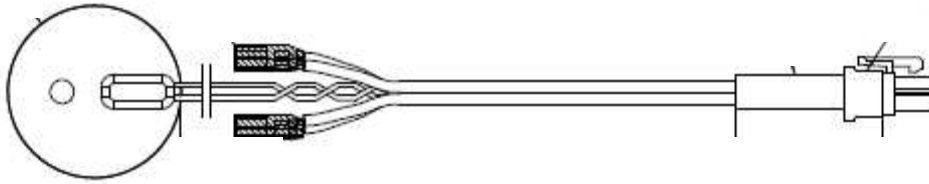


Communications Cable:



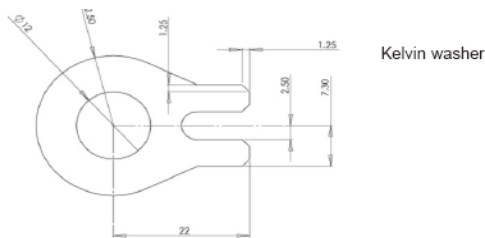
Reference name	Description	LEM Code
COM. CABLE L = 0.4M SENT	The S-Bus communication cables for connection between S-Bus converter/S-Box to Sentinel 3 units in a length of 400mm	92.33.04.936.0
COM. CABLE L=1M SENT	The S-Bus communication cables for connection between S-Bus converter/S-Box to Sentinel 3 units in a length of 1 meter	92.33.04.914.0
COM. CABLE L=5M SENT	The S-Bus communication cables for connection between S-Bus converter/S-Box to Sentinel 3 units in a length of 5 meters	92.33.04.915.0
COM. CABLE L=10M SENT	The S-Bus communication cables for connection between S-Bus converter/S-Box to Sentinel 3 units in a length of 10 meters	92.33.04.916.0
COM. CABLE L=15M SENT	The S-Bus communication cables for connection between S-Bus converter/S-Box to Sentinel 3 units in a length of 15 meters	92.33.04.917.0

Power Cable (incl T°C probe):



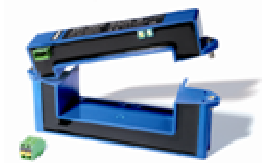
Reference name	Description	LEM Code
POWER CABLE L=0.4M SENT3	The power and Sense cable that connect the Sentinel 3 to the battery in a lengths of 400mm.	92.33.05.015.0

Kelvin Washers:



Reference name	Description	LEM Code
Washer 6mm Sentinel	A 6 mm washer for each cell terminal to connect the power and sense leads	92.40.07.392.0
Washer 8mm Sentinel	A 8mm washer for each cell terminal to connect the power and sense leads	92.40.07.393.0
Washer 10mm Sentinel	A 10mm washer for each cell terminal to connect the power and sense leads	92.40.07.394.0
Washer 12mm Sentinel	A 12mm washer for each cell terminal to connect the power and sense leads	92.40.07.395.0

DC Current Transducers:



DH Series



DK Series

Reference name	Description	LEM Code
DK 100 B420 B	Split core DC current transducer with 2% accuracy @ In for 50, 75 and 100A	F2.23.34.000.0
DK 200 B420 B	Split core DC current transducer with 2% accuracy @ In for 100, 150 and 200A	F2.23.44.000.0
DH 500 B420L B	Split core DC current transducer with 1% accuracy @ In for 500A	64.41.50.000.0
DH 1000 B420L B	Split core DC current transducer with 1% accuracy @ In for 1000A	64.41.60.000.0