

Integrated Current Sensor GXL AN series

Description

GXL AN is a 200A range Integrated Current Sensor (ICS) built with QFN package technology, providing an excellent power density for power PCB current measurements with built in galvanic insulation. This product is a high precision integrated current sensor (ICS) from LEM, where the current goes through its primary pins and does not require a core (coreless product).

The GXL product family provides a very accurate solution for measuring DC and AC currents in all highly compact and demanding industrial and automotive applications. This product uses a very small QFN package technology with large primary pads and wettable flanks for soldering and visual inspection. It provides analog voltage output with best-in-class accuracy together with overcurrent detections (user configurable and factory set).

The current goes through the primary pins (1 to 8) which have a very low internal resistance ($<0.25\text{ m}\Omega$). The secondary pins have 6mm distance creepage / clearance from the primary in order to insure a good enough isolation level.

These features make the device suitable for high voltage applications requiring high precision and strong immunity against external field with its differential sensing solution.

Main features & Advantages

- Industrial and automotive
- Open loop multi-range current sensor: 200A
- Low electrical resistance $< 0.25\text{ m}\Omega$
- Dual supply voltage 5V and 3.3V
- User settable fast overcurrent detection
- Low power consumption
- Compact design for surface mount PCB mounting
- High bandwidth
- Galvanic separation between primary and secondary with 6 mm of dCp/dCl
- Reinforced insulation capability

Typical applications

- Drives
- HVAC Inverters
- Appliances
- Solar Inverters
- Automotive

Standards

- IEC 61800-5-1: 2007
- IEC 62109-1: 2010
- IEC 62368-1: 2018 (replacing IEC 60950-1)
- UL 1577: 2014 (Pending)
- UL 62638-1 (Pending)
- AEC-Q-100 Grade 0 qualified (pending)

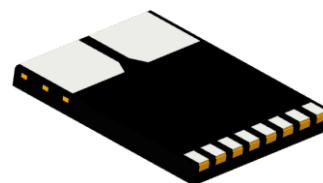


Figure 1: GXL QFN package

Pinout

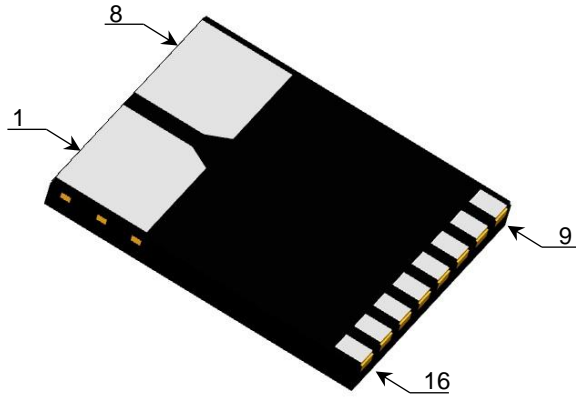


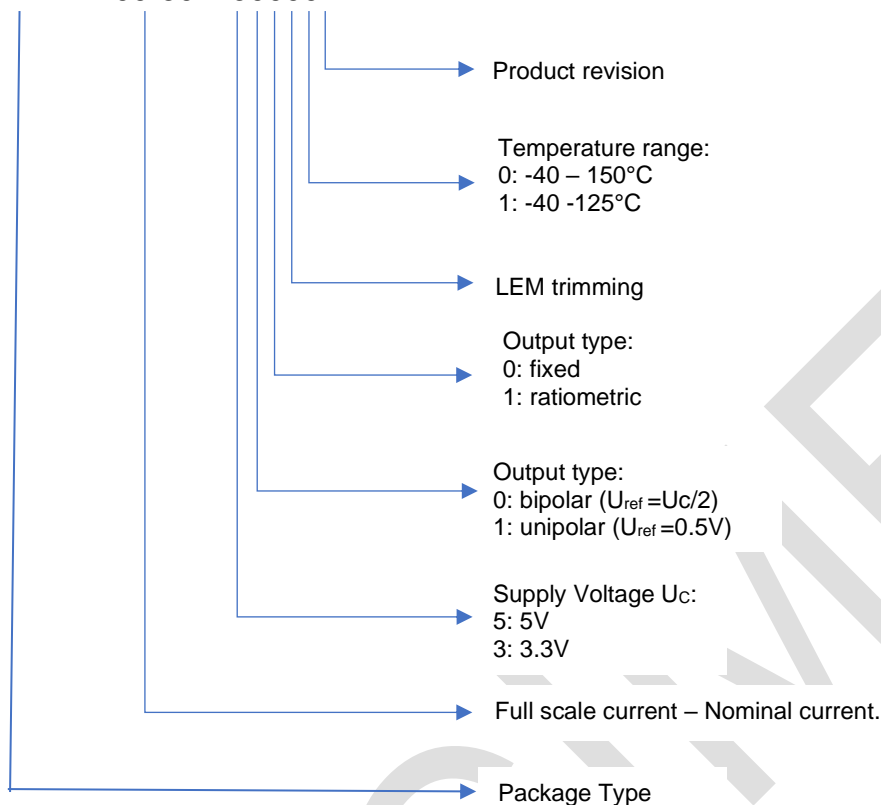
Figure 2: GXL package with pin number (bottom view)

Pin#	Name	Type	Description
1	I_{P+}	Input	input (+) of the primary current
8	I_{P-}	Input	Input (-) of the primary current
9	U_C	Power	Supply voltage
10	$U_{E\text{OCD}}$	Input	External OCD threshold voltage terminal
11	OCD_{INT}	Output	Internal OCD
12	U_{out}	Output	Output voltage
13	U_{ref}	Output	Reference voltage
14	NC	N/A	Connect to GND
15	OCD_{EXT}	Output	External OCD terminal
16	GND	Ground	Ground terminal

Table 1: GXL AN Device Pin Function Description.

Selection guide

GXL AN 200-80 – 50000A



Standard products

Product name	Full scale range (A peak)	Nominal current (A rms) ¹	Sensitivity (mV/A)	Supply Voltage (V)	Polarity	Output type
GXL AN 125-50 50000B	± 125	±50	16	5 V	Bipolar	Fixed
GXL AN 200-80 50000B	± 200	±80	10	5 V	Bipolar	Fixed
GXL AN 125-50 30000B	± 125	±50	10	3.3 V	Bipolar	Fixed
GXL AN 200-80 30000B	± 200	±80	6.25	3.3 V	Bipolar	Fixed
GXL AN 125-50 50100B	± 125	±50	16	5 V	Bipolar	Ratiometric
GXL AN 200-80 50100B	± 200	±80	10	5 V	Bipolar	Ratiometric
GXL AN 125-50 30100B	± 125	±50	10	3.3 V	Bipolar	Ratiometric
GXL AN 200-80 30100B	± 200	±80	6.25	3.3 V	Bipolar	Ratiometric

Table 2

¹ Trimmings at LEM are done at this nominal current

Block diagram

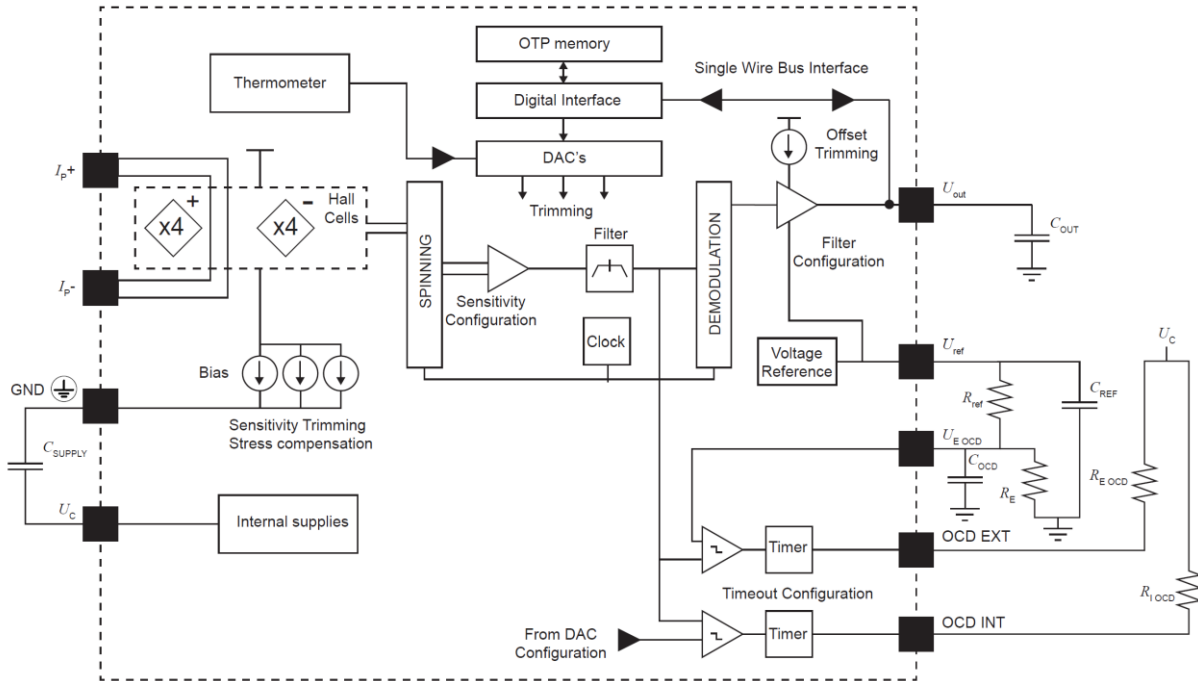


Figure 3 Block diagram GXL AN

External circuit example	Min	Typ	Max	Unit
R_{ref}	4.7	47		k Ω
R_e	4.7	47		k Ω
R_{e_ocrd}	1	4.7	50	k Ω
R_{i_ocrd}	1	4.7	50	k Ω
C_{out}	-	4.7	6	nF
C_{supply}	10	47		nF
C_{ref}	-	4.7	47	nF
C_{out}		4.7		nF

Table 3: Specification Table of External Component Values

Absolute maximum ratings

Parameter	Symbol	Unit	Value
Maximum supply voltage	U_{Cmax}	V	7.5
Maximum voltage on other pins	U_{max}	V	7.5
Electrostatic discharge voltage (HBM - Human Body Model)	$U_{ESD HBM}$	kV	2
Electrostatic discharge voltage (CDM - Charged Device Model)	$U_{ESD CDM}$	V	500
Maximum junction temperature	T_{Jmax}	°C	165

Table 4

Absolute maximum ratings apply at 25 °C unless otherwise noted.

Stresses above these ratings may cause permanent damage.

Exposure to absolute maximum ratings for extended periods may degrade reliability.

Environmental and mechanical characteristics

Parameter	Symbol	Unit	Min	Typ	Max	Comment
Ambient operating temperature	T_A	°C	-40		150	
Ambient storage temperature	$T_{A st}$	°C	-55		165	
Thermal resistance junction to case ²	$R_{th JC}$	K/W		18		
Thermal resistance junction to ambient ²	$R_{th JA}$	K/W		19		
Mass	m	g		1.4		

Table 5

³ 100% tested in production.

Insulation characteristics GXL

Parameter	Symbol	Unit	Value	Comment
RMS voltage for AC insulation test, 50Hz, 1min	U_d	kV	4.53 ³	According to IEC 62368-1
Impulse withstand voltage 1.2/50 μ s	U_{NI}	kV	6.40	According to IEC 62109-1, IEC 61800-5-1
RMS recurring peak voltage (Partial discharge test)	U_{PD}	V	933	According to IEC 62109-1, IEC 61800-5-1
RMS inception voltage (Partial discharge test)	$U_{t\ inception}$	V	1238	According to IEC 62109-1, IEC 61800-5-1
RMS extinction voltage (Partial discharge test)	$U_{t\ extinction}$	V	990	According to IEC 62109-1, IEC 61800-5-1
Clearance (pri. -sec.)	d_{Cl}	mm	6	Shortest distance through air
Creepage distance (pri. -sec.)	d_{Cp}	mm	6	Shortest path along device body
Case material			V0	According to UL94, flammability
Comparative tracking index	CTI		600	Grade requirements mass compound

Table 6

Working voltage according to IEC 62368-1

Working voltage		PD 2	Standards
Basic insulation	RMS voltage (V)	1192	IEC 62368-1 (replacing IEC 60950-1)
Reinforced insulation	RMS voltage (V)	593	

Table 7

Rated insulation voltage according to IEC 61800-5-1

Rated insulation voltage		OV II / PD 2	OV III/ PD 2	Standards
Basic isolation	RMS voltage (V)	1104	600	IEC 61800-5-1
Reinforced isolation	RMS voltage (V)	593	300	

Table 8

Rated insulation voltage according to IEC 62109-1

Rated insulation voltage		OV II / PD 2	OV III/ PD 2	Standards
Basic isolation	RMS voltage (V)	> 1000	600	IEC 62109-1
Reinforced isolation	RMS voltage (V)	593	300	

Table 9

³ Tested at 4.07 kV in production.

Common electrical data (independent of sensitivity)

At $T_A = 35\text{ °C}$, $U_C = +5\text{ V}$, $R_L = 100\text{ k}\Omega$, unless otherwise noted

Supply characteristics and consumption

Parameter	Symbol	Unit	Min	Typ	Max	Comment
DC supply voltage	U_C	V	4.5	5	5.5	5V versions
DC supply voltage	U_C	V	3.135	3.3	3.465	3V3 versions
DC Current consumption	I_C	mA		20	26	
Start-up time	T_{start}	ms		3		

Table 10

Primary characteristics

Parameter	Symbol	Unit	Min	Typ	Max	Comment
Resistance of the primary	R_P	m Ω		<0.25		$T_A = 25\text{ °C}$

Table 11

Output characteristics

Parameter	Symbol	Unit	Min	Typ	Max	Comment
Output voltage range	$U_{out}-U_{ref}$	V	-2		2	5V versions $U_C \geq 4.6\text{ V}$, @ I_{PM}
Output voltage range	$U_{out}-U_{ref}$	V	-1.25		1.25	3V3 versions @ I_{PM}
Output internal resistance of Uout	R_{out}	Ω		1		
Maximum output current source of Uout	I_{Omax}	mA	20			
Maximum input current sink of Uout	I_{Imax}	mA	20			
Load capacitance on Uout	C_L	nF	0	4.7	6	
Delay time (input slope= I_{PN} (20A/ μ s))	t_{D10}	μ s		1		@ 10 % of I_{PN}
	t_{D90}	μ s		1.6		@ 90 % of I_{PN}
Frequency bandwidth	BW	kHz		300		@ -3dB

Table 12

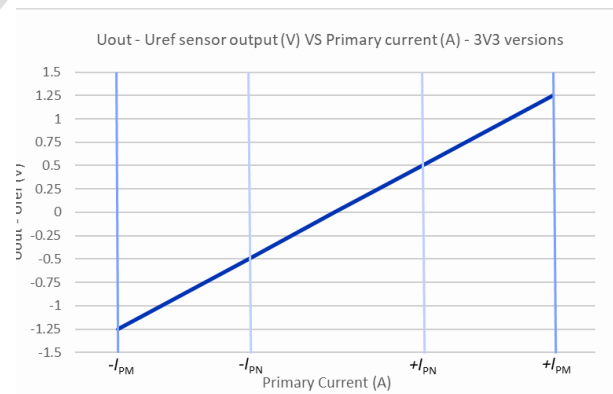
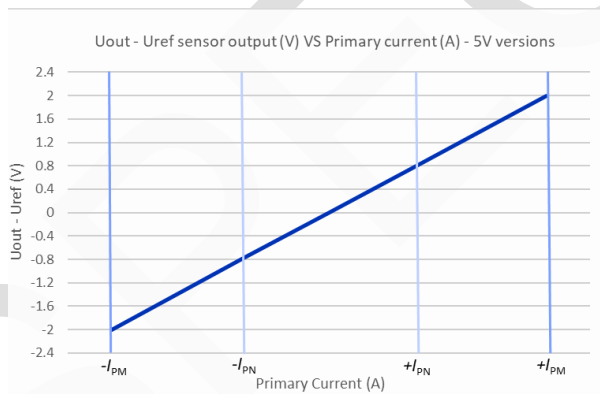


Figure 3 & 4: Sensor output voltage referred to U_{ref} .

Internal reference characteristics

Parameter	Symbol	Unit	Min	Typ	Max	Comment
Internal reference voltage @ $I_P = 0$ A	U_{ref}	V	2.48	2.5	2.52	5V versions
Internal reference voltage @ $I_P = 0$ A	$U_{out} - U_{ref}$	V	1.64	1.65	1.66	3V3 versions
Temperature coefficient of U_{ref}	TCU_{ref}	ppm/K	-220	± 75	220	-40 °C ... 150 °C
Output internal resistance of U_{ref}	R_{ref}	Ω		5		
Maximum output current source of U_{ref}	I_{omax}	mA		0.5	1	
Maximum input current sink of U_{ref}	I_{imax}	mA		0.5	1	
Load capacitance on U_{ref}	C_L	nF	0	4.7	47	

Table 13

Lifetime parameters

Parameter	Symbol	Unit	Min	Typ	Max	Comment
Sensitivity error drift after ageing	ϵ_s	%		TBD		TBC based on characterization after qualification.
Offset drift after ageing	U_{OE}	mV		TBD		TBC based on characterization after qualification.
Total accuracy over temp	ϵ_{tot}	%		TBD		TBC based on characterization after qualification.
Total accuracy over lifetime	ϵ_{tot}	%		TBD		TBC based on characterization after qualification.

Table 14

Electrical data GXL AN 125-50 50000B

 At $T_A = 25\text{ °C}$, $U_C = +5\text{ V}$, $R_L = 100\text{ k}\Omega$, unless otherwise noted

Parameter	Symbol	Unit	Min	Typ	Max	Comment
Primary nominal current	I_{PN}	A		50		
Primary current, measuring range	I_{PM}	A	-125		125	
Nominal sensitivity	S_N	mV/A		16		800 mV @ I_{PN}
Sensitivity error @35°C	ϵ_S	%	-0.5		0.5	TBC
Sensitivity error @35°C-150°C	ϵ_{SHOT}	%	-2.1		2.1	From 35°C to 150°C - TBC
Sensitivity error @-40°C-35°C	ϵ_{SCOLD}	%	-2.3		2.3	From -40°C to 35°C - TBC
Sum of sensitivity and linearity error	ϵ_{SL25}	% of I_{PM}	-0.7		0.7	@35°C TBC
Electrical offset voltage	U_{OE}	mV	-5		5	$U_{out}-U_{ref}$ @ $U_{ref}=2.5\text{ V}$
Electrical offset error @35°C-150°C	U_{OEHOT}	mV	-7		7	$U_{out}-U_{ref}$
Electrical offset error @-40°C-35°C	U_{OECOLD}	mV	-6.5		6.5	$U_{out}-U_{ref}$
Noise voltage spectral density	U_{no}	$\mu\text{V}/\text{Hz}^{1/2}$				TBC
Linearity error 0 ... $\pm I_{PN}$	ϵ_L	%	-0.5		0.5	Referred to I_{PN}
Linearity error 0 ... $\pm I_{PM}$	ϵ_L	%	-0.5		0.5	Referred to I_{PM}
Total error at I_{PM}	ϵ_{tot}	% of I_{PM}	-1		1	From -40°C to 150°C

Table 15

Electrical data GXL AN 200-80 50000B

 At $T_A = 25\text{ °C}$, $U_C = +5\text{ V}$, $R_L = 100\text{ k}\Omega$, unless otherwise noted

Parameter	Symbol	Unit	Min	Typ	Max	Comment
Primary nominal current	I_{PN}	A		80		
Primary current, measuring range	I_{PM}	A	-200		200	
Nominal sensitivity	S_N	mV/A		10		800 mV @ I_{PN}
Sensitivity error @35°C	ϵ_S	%	-0.5		0.5	TBC
Sensitivity error @35°C-150°C	ϵ_{SHOT}	%	-2.1		2.1	From 35°C to 150°C - TBC
Sensitivity error @-40°C-35°C	ϵ_{SCOLD}	%	-2.3		2.3	From -40°C to 35°C - TBC
Sum of sensitivity and linearity error	ϵ_{SL25}	% of I_{PM}	-0.7		0.7	@35°C TBC
Electrical offset voltage	U_{OE}	mV	-5		5	$U_{out}-U_{ref}$ @ $U_{ref}=2.5\text{ V}$
Electrical offset error @35°C-150°C	U_{OEHOT}	mV	-7		7	$U_{out}-U_{ref}$
Electrical offset error @-40°C-35°C	U_{OECOLD}	mV	-6.5		6.5	$U_{out}-U_{ref}$
Noise voltage spectral density	U_{no}	$\mu\text{V}/\text{Hz}^{1/2}$				TBC
Linearity error 0 ... $\pm I_{PN}$	ϵ_L	%	-0.5		0.5	Referred to I_{PN}
Linearity error 0 ... $\pm I_{PM}$	ϵ_L	%	-0.5		0.5	Referred to I_{PM}
Total error at I_{PM}	ϵ_{tot}	% of I_{PM}	-1		1	From -40°C to 150°C

Table 16

Electrical data GXL AN 125-50 3000B

 At $T_A = 25\text{ °C}$, $U_C = +3.3\text{ V}$, $R_L = 100\text{ k}\Omega$, unless otherwise noted

Parameter	Symbol	Unit	Min	Typ	Max	Comment
Primary nominal current	I_{PN}	A		50		
Primary current, measuring range	I_{PM}	A	-125		125	
Nominal sensitivity	S_N	mV/A		10		500 mV @ I_{PN}
Sensitivity error @35°C	ϵ_S	%	-0.5		0.5	TBC
Sensitivity error @35°C-150°C	ϵ_{SHOT}	%	-2.1		2.1	From 35°C to 150°C - TBC
Sensitivity error @-40°C-35°C	ϵ_{SCOLD}	%	-2.3		2.3	From -40°C to 35°C - TBC
Sum of sensitivity and linearity error	ϵ_{SL25}	% of I_{PM}	-0.7		0.7	@35°C TBC
Electrical offset voltage	U_{OE}	mV	-5		5	$U_{out}-U_{Iref}$ @ $U_{Iref}=2.5\text{ V}$
Electrical offset error @35°C-150°C	U_{OEHOT}	mV	-7		7	$U_{out}-U_{ref}$
Electrical offset error @-40°C-35°C	U_{OECOLD}	mV	-6.5		6.5	$U_{out}-U_{ref}$
Noise voltage spectral density	U_{no}	$\mu\text{V}/\text{Hz}^{1/2}$				TBC
Linearity error 0 ... $\pm I_{PN}$	ϵ_L	%	-0.5		0.5	Referred to I_{PN}
Linearity error 0 ... $\pm I_{PM}$	ϵ_L	%	-0.5		0.5	Referred to I_{PM}
Total error at I_{PM}	ϵ_{tot}	% of I_{PM}	-1		1	From -40°C to 150°C

Table 17

Electrical data GXL AN 200-80 3000B

 At $T_A = 25\text{ °C}$, $U_C = +3.3\text{ V}$, $R_L = 100\text{ k}\Omega$, unless otherwise noted

Parameter	Symbol	Unit	Min	Typ	Max	Comment
Primary nominal current	I_{PN}	A		80		
Primary current, measuring range	I_{PM}	A	-200		200	
Nominal sensitivity	S_N	mV/A		6.25		500 mV @ I_{PN}
Sensitivity error @35°C	ϵ_S	%	-0.5		0.5	TBC
Sensitivity error @35°C-150°C	ϵ_{SHOT}	%	-2.1		2.1	From 35°C to 150°C - TBC
Sensitivity error @-40°C-35°C	ϵ_{SCOLD}	%	-2.3		2.3	From -40°C to 35°C - TBC
Sum of sensitivity and linearity error	ϵ_{SL25}	% of I_{PM}	-0.7		0.7	@35°C TBC
Electrical offset voltage	U_{OE}	mV	-5		5	$U_{out}-U_{Iref}$ @ $U_{Iref}=2.5\text{ V}$
Electrical offset error @35°C-150°C	U_{OEHOT}	mV	-7		7	$U_{out}-U_{ref}$
Electrical offset error @-40°C-35°C	U_{OECOLD}	mV	-6.5		6.5	$U_{out}-U_{ref}$
Noise voltage spectral density	U_{no}	$\mu\text{V}/\text{Hz}^{1/2}$				TBC
Linearity error 0 ... $\pm I_{PN}$	ϵ_L	%	-0.5		0.5	Referred to I_{PN}
Linearity error 0 ... $\pm I_{PM}$	ϵ_L	%	-0.5		0.5	Referred to I_{PM}
Total error at I_{PM}	ϵ_{tot}	% of I_{PM}	-1		1	From -40°C to 150°C

Table 18

Electrical data GXL AN 125-50 50100B

 At $T_A = 25\text{ }^\circ\text{C}$, $U_C = +5\text{ V}$, $R_L = 100\text{ k}\Omega$, unless otherwise noted

Parameter	Symbol	Unit	Min	Typ	Max	Comment
Primary nominal current	I_{PN}	A		50		
Primary current, measuring range	I_{PM}	A	-125		125	
Nominal sensitivity	S_N	mV/A		16		800 mV @ I_{PN}
Sensitivity error @35°C	ϵ_S	%	-0.5		0.5	TBC
Sensitivity error @35°C-150°C	ϵ_{SHOT}	%	-2.1		2.1	From 35°C to 150°C - TBC
Sensitivity error @-40°C-35°C	ϵ_{SCOLD}	%	-2.3		2.3	From -40°C to 35°C - TBC
Sum of sensitivity and linearity error	ϵ_{SL25}	% of I_{PM}	-0.7		0.7	@35°C
Electrical offset voltage	U_{OE}	mV	-5		5	$U_{out}-U_{Iref}$ @ $U_{Iref}=2.5\text{ V}$
Electrical offset error @35°C-150°C	U_{OEHOT}	mV	-7		7	$U_{out}-U_{ref}$
Electrical offset error @-40°C-35°C	U_{OECOLD}	mV	-6.5		6.5	$U_{out}-U_{ref}$
Noise voltage spectral density	U_{no}	$\mu\text{V}/\text{Hz}^{1/2}$				TBC
Linearity error 0 ... $\pm I_{PN}$	ϵ_L	%	-0.5		0.5	Referred to I_{PN}
Linearity error 0 ... $\pm I_{PM}$	ϵ_L	%	-0.5		0.5	Referred to I_{PM}
Total error at I_{PM}	ϵ_{tot}	% of I_{PM}	-1		1	From -40°C to 150°C
Ratiometricity Error (sensitivity)	ϵ_R	%		± 0.5		From -40°C to 150°C
Ratiometricity Error (offset)	ϵ_{RO}	mV	-10		10	From -40°C to 150°C

Table 19

Electrical data GXL AN 200-80 50100B

 At $T_A = 25\text{ }^\circ\text{C}$, $U_C = +5\text{ V}$, $R_L = 100\text{ k}\Omega$, unless otherwise noted

Parameter	Symbol	Unit	Min	Typ	Max	Comment
Primary nominal current	I_{PN}	A		80		
Primary current, measuring range	I_{PM}	A	-200		200	
Nominal sensitivity	S_N	mV/A		10		800 mV @ I_{PN}
Sensitivity error @35°C	ϵ_S	%	-0.5		0.5	TBC
Sensitivity error @35°C-150°C	ϵ_{SHOT}	%	-2.1		2.1	From 35°C to 150°C - TBC
Sensitivity error @-40°C-35°C	ϵ_{SCOLD}	%	-2.3		2.3	From -40°C to 35°C - TBC
Sum of sensitivity and linearity error @ $T_A = 25\text{ }^\circ\text{C}$	ϵ_{SL25}	% of I_{PM}	-0.7		0.7	TBC
Electrical offset voltage	U_{OE}	mV	-5		5	$U_{out}-U_{Iref}$ @ $U_{Iref}=2.5\text{ V}$
Electrical offset error @35°C-150°C	U_{OEHOT}	mV	-7		7	$U_{out}-U_{ref}$
Electrical offset error @-40°C-35°C	U_{OECOLD}	mV	-6.5		6.5	$U_{out}-U_{ref}$
Noise voltage spectral density	U_{no}	$\mu\text{V}/\text{Hz}^{1/2}$				TBC
Linearity error 0 ... $\pm I_{PN}$	ϵ_L	%	-0.5		0.5	Referred to I_{PN}
Linearity error 0 ... $\pm I_{PM}$	ϵ_L	%	-0.5		0.5	Referred to I_{PM}
Total error at I_{PM}	ϵ_{tot}	% of I_{PM}	-1		1	From -40°C to 150°C
Ratiometricity Error (sensitivity)	ϵ_R	%		± 0.5		From -40°C to 150°C
Ratiometricity Error (offset)	ϵ_{RO}	mV	-10		10	From -40°C to 150°C

Table 20

Electrical data GXL AN 125-50 30100B

 At $T_A = 25\text{ }^\circ\text{C}$, $U_C = +3.3\text{ V}$, $R_L = 100\text{ k}\Omega$, unless otherwise noted

Parameter	Symbol	Unit	Min	Typ	Max	Comment
Primary nominal current	I_{PN}	A		50		
Primary current, measuring range	I_{PM}	A	-125		125	
Nominal sensitivity	S_N	mV/A		10		500 mV @ I_{PN}
Sensitivity error @35°C	ϵ_S	%	-0.5		0.5	TBC
Sensitivity error @35°C-150°C	ϵ_{SHOT}	%	-2.1		2.1	From 35°C to 150°C - TBC
Sensitivity error @-40°C-35°C	ϵ_{SCOLD}	%	-2.3		2.3	From -40°C to 35°C - TBC
Sum of sensitivity and linearity error @ $T_A = 25\text{ }^\circ\text{C}$	ϵ_{SL25}	% of I_{PM}	-0.7		0.7	TBC
Electrical offset voltage	U_{OE}	mV	-5		5	$U_{out}-U_{Iref}$ @ $U_{Iref}=2.5\text{ V}$
Electrical offset error @35°C-150°C	U_{OEHOT}	mV	-7		7	$U_{out}-U_{ref}$
Electrical offset error @-40°C-35°C	U_{OECOLD}	mV	-6.5		6.5	$U_{out}-U_{ref}$
Noise voltage spectral density	U_{no}	$\mu\text{V}/\text{Hz}^{1/2}$				TBC
Linearity error 0 ... $\pm I_{PN}$	ϵ_L	%	-0.5		0.5	Referred to I_{PN}
Linearity error 0 ... $\pm I_{PM}$	ϵ_L	%	-0.5		0.5	Referred to I_{PM}
Total error at I_{PM}	ϵ_{tot}	% of I_{PM}	-1		1	From -40°C to 150°C
Ratiometricity Error (sensitivity)	ϵ_R	%		± 0.5		From -40°C to 150°C
Ratiometricity Error (offset)	ϵ_{RO}	mV	-10		10	From -40°C to 150°C

Table 21

Electrical data GXL AN 200-80 30100B

 At $T_A = 25\text{ }^\circ\text{C}$, $U_C = +3.3\text{ V}$, $R_L = 100\text{ k}\Omega$, unless otherwise noted

Parameter	Symbol	Unit	Min	Typ	Max	Comment
Primary nominal current	I_{PN}	A		80		
Primary current, measuring range	I_{PM}	A	-200		200	
Nominal sensitivity	S_N	mV/A		6.25		500 mV @ I_{PN}
Sensitivity error @35°C	ϵ_S	%	-0.5		0.5	TBC
Sensitivity error @35°C-150°C	ϵ_{SHOT}	%	-2.1		2.1	From 35°C to 150°C - TBC
Sensitivity error @-40°C-35°C	ϵ_{SCOLD}	%	-2.3		2.3	From -40°C to 35°C - TBC
Sum of sensitivity and linearity error @ $T_A = 25\text{ }^\circ\text{C}$	ϵ_{SL25}	% of I_{PM}	-0.7		0.7	TBC
Electrical offset voltage	U_{OE}	mV	-5		5	$U_{out}-U_{Iref}$ @ $U_{Iref}=2.5\text{ V}$
Electrical offset error @35°C-150°C	U_{OEHOT}	mV	-7		7	$U_{out}-U_{ref}$
Electrical offset error @-40°C-35°C	U_{OECOLD}	mV	-6.5		6.5	$U_{out}-U_{ref}$
Noise voltage spectral density	U_{no}	$\mu\text{V}/\text{Hz}^{1/2}$				TBC
Linearity error 0 ... $\pm I_{PN}$	ϵ_L	%	-0.5		0.5	Referred to I_{PN}
Linearity error 0 ... $\pm I_{PM}$	ϵ_L	%	-0.5		0.5	Referred to I_{PM}
Total error at I_{PM}	ϵ_{tot}	% of I_{PM}	-1		1	From -40°C to 150°C
Ratiometricity Error (sensitivity)	ϵ_R	%		± 0.5		From -40°C to 150°C
Ratiometricity Error (offset)	ϵ_{RO}	mV	-10		10	From -40°C to 150°C

Table 22

Overcurrent detection (OCD)

Overcurrent detection is a feature included on GXL AN product to detect high peaks of currents happening during operation. Two overcurrent detection types are included in this product:

Internal OCD which offers the fastest reaction time and External OCD with a user settable threshold.

Internal overcurrent detection (OCD_INT pin)

Parameter	Symbol	Unit	Min	Typ	Max	Comment
OCD_INT detection threshold	$I_{OCD\ Th}$	A		$3 \times \pm I_{PN}$		1.5 to $5 \times \pm I_{PN}$ available. Contact LEM for more options
OCD_INT threshold error	$\epsilon_{I_{OCD\ Th}}$	%		± 9		$U_c = 5V$
OCD_INT threshold error	$\epsilon_{I_{OCD\ Th}}$	%		± 15		$U_c = 3.3V$
OCD_INT output on resistance to GND	$R_{on\ I_{OCD}}$	Ω		11	46	Open drain output, active low
OCD_INT output on sink capability	$I_{I_{OCD}max}$	mA	16	20		
OCD_INT output hold time	$t_{hold\ I_{OCD}}$	μs	8	10	12	
OCD_INT delay time	$t_{D\ I_{OCD}}$	μs			0.5	

Table 23

External overcurrent detection (OCD_EXT pin)

Parameter	Symbol	Unit	Min	Typ	Max	Comment
OCD_EXT threshold error	$\epsilon_{E_{OCD\ Th}}$	% of Full Scale		± 6.8		$U_c = 5V$, bipolar
OCD_EXT threshold error	$\epsilon_{E_{OCD\ Th}}$	% of Full Scale		± 14		$U_c = 3.3V$, bipolar
OCD_EXT output on resistance to GND	$R_{on\ E_{OCD}}$	Ω		11	46	Open drain output, active low
OCD_EXT output on sink capability	$I_{E_{OCD}max}$	mA	16	20		
OCD_EXT output hold time	$t_{hold\ E_{OCD}}$	μs	2.5		10	
OCD_EXT delay time	$t_{D\ E_{OCD}}$	μs		1.5	2	

Table 24

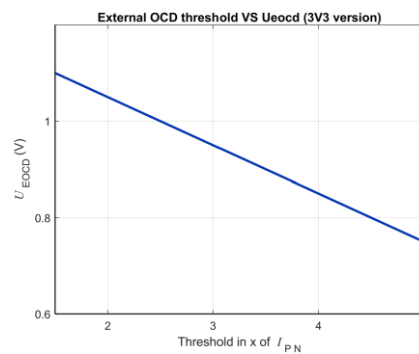
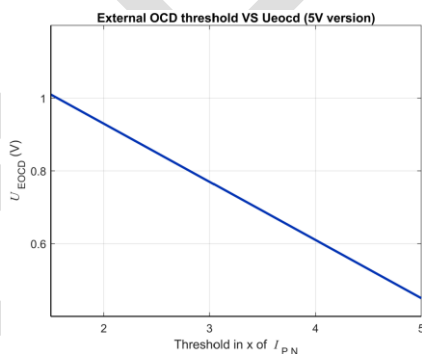


Figure 3 & 4: OCD level threshold for 5V and 3.3V versions

Overcurrent Detection (OCD) Equations

$$U_{E_{OCD}} = \frac{R_E}{R_E + R_{ref}} * U_{Source} \quad \text{Eqn1. External OCD Voltage}$$

$$I_{THRESHOLD} = -6.5 * \left(\frac{R_E}{R_E + R_{ref}} * U_{Source} \right) + 7.8125 \quad \text{Eqn2. External OCD Current Threshold (in x of Ipn) - 5V versions}$$

$$I_{\text{THRESHOLD}} = -10 * \left(\frac{R_E}{R_E + R_{\text{ref}}} * U_{\text{Source}} \right) + 12.5$$

Eqn3. External OCD Current Threshold (in x of Ipn) - 3.3V versions

Thermal characteristics

When designing a system containing a current sensor, self-heating due to the flow of the current should be considered. When a current pass through, the sensor's temperature will increase, and this may affect its performances. This change on temperature will depend on the current profile, PCB layout, cooling techniques and copper thickness. The following plots show an example of different thermal responses of the GXL AN sensor when used on an evaluation LEM board.

Error! Reference source not found. shows the continuous RMS current that GXM/L AN is capable of measuring depending on the maximum expected temperature of the system.

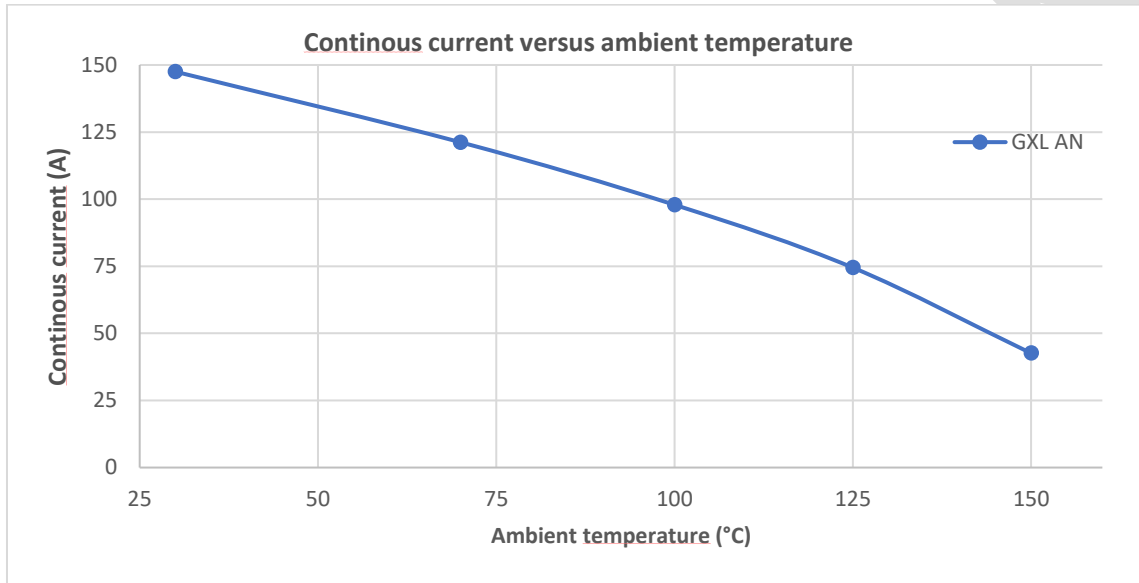


Figure 8 Measuring range vs temperature

Finally, Figure represents the maximum measurement range (peak current) versus the temperature.

The maximum temperature should be evaluated on the final system where the current sensor is integrated on the real application. This temperature should never exceed the maximum junction temperature as shown on the previous paragraphs.

Evaluation board PCB

All the above results will be based on a LEM evaluation board.

Details on the evaluation board: **to be added soon**

SPECIMEN

Recommended application schematics

Typical schematics GXL AN

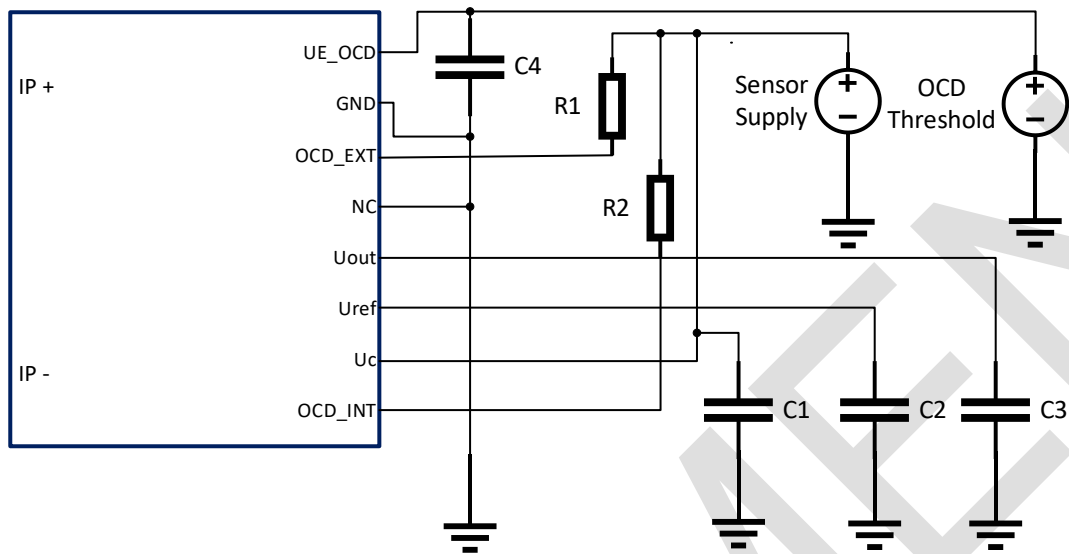


Figure 10: Typical application schematics; AN products

Output measurement is performed using Uout and Uref, both OCD are used.

Reference	Value	Comments
C1	47nF	Decoupling capacitor. To be placed as close as possible to the sensor.
C2	4.7nF	Reference capacitor, mandatory if internal reference voltage is used. Depending on the application, this value can be increased to 47nF to improve the stability. To be placed as close as possible to the sensor.
C3	4.7nF	Output capacitor. Insure stable output operation on full bandwidth. To be placed as close as possible to the sensor.
C4	4.7nF	Only mounted if OCD_EXT functionality is used. This capacitor insure a better immunity of Ue OCD to noise and transients. OCD_EXT accuracy cannot be guaranteed if not mounted. To be placed as close as possible to the sensor.
R1	10kOhms	OCD Pull up. Must be connected to Uc, as close as possible to the sensor.
R2	10kOhms	OCD Pull up. Must be connected to Uc, as close as possible to the sensor.
Supply	5V / 3.3V	Supply voltage matching product requirements.
OCD threshold voltage	See datasheet	OCD threshold voltage source must be very stable to insure an accurate threshold. Different methods can be used to fix the OCD threshold: - External source (DAC, amplifier, Zener diode...) - Resistor divider, connected to Uc or Uref See "External OCD" chapter for more details.

Table 1: Typical recommended components (AN products)

For more details, please read "ICS Products Schematics" application note available on LEM website.

Terms and definitions

Definition of typical, minimum and maximum values

Minimum and maximum values for specified limiting and safety conditions have to be understood as such as well as values shown in “typical” graphs.

On the other hand, measured values are part of a statistical distribution that can be specified by an interval with upper and lower limits and a probability for measured values to lie within this interval.

Unless otherwise stated (e.g. “100 % tested”), the LEM definition for such intervals designated with “min” and “max” is that the probability for values of samples to lie in this interval is 99.73 %.

For a normal (Gaussian) distribution, this corresponds to an interval between -3 sigma and +3 sigma. If “typical” values are not obviously mean or average values, those values are defined to delimit intervals with a probability of 68.27 %, corresponding to an interval between -sigma and +sigma for a normal distribution.

Typical, maximal and minimal values are determined during the initial characterization of the product.

Total error referred to primary

The total error ϵ_{tot} is the error at $\pm I_{PN}$, relative to the FS (Full Scale). It includes all errors mentioned below:

- the electrical offset I_{OE}
- the magnetic offset I_{OM}
- the sensitivity error ϵ_s
- the linearity error ϵ_L (to I_{PN})

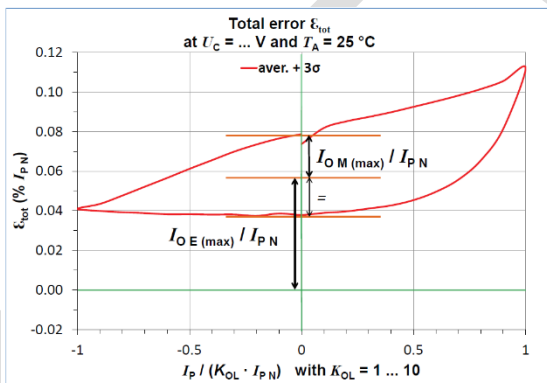


Figure 9 Total error

Electrical offset referred to primary

Using the current cycle shown in figure 7, the electrical offset current I_{OE} is the residual output referred to primary when the input current is zero.

Magnetic offset referred to primary

$$I_{OE} = \frac{I_{P(3)} + I_{P(5)}}{2}$$

$$I_{OM} = \frac{I_{P(3)} - I_{P(5)}}{2}$$

The magnetic offset current I_{OM} is the consequence of a current on the primary side (“memory effect” of the transducer’s ferro-magnetic core). It is measured using the following primary current cycle. I_{OM} depends on the current value $I_P \geq I_{PN}$.

K_{OL} : Overload factor

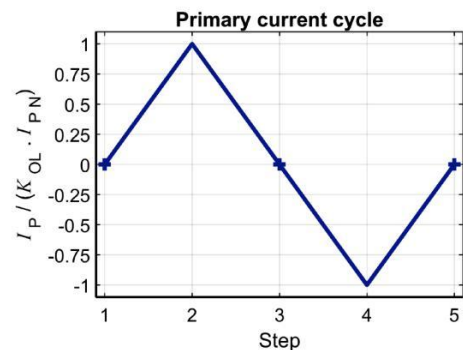


Figure 10 Current cycle used to measure magnetic and electrical offset (transducer supplied)

Sensitivity and linearity

To measure sensitivity and linearity, the primary current (DC) is cycled from 0 to I_P , then to $-I_P$ and back to 0 (equally spaced $I_{PN}/10$ steps). The sensitivity S is defined as the slope of the linear regression line for a cycle between $\pm I_{PN}$.

The linearity error ϵ_L is the maximum positive or negative difference between the measured points and the linear regression line, expressed in % of I_{PN} .

Delay times

The delay time t_{D10} @ 10 % and the delay time t_{D90} @ 90 % with respect to the primary are shown in the next figure.

Both slightly depend on the primary current di/dt. They are measured at nominal current.

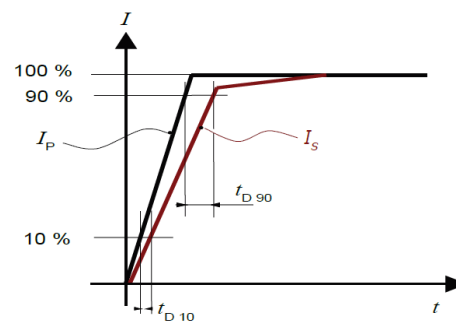


Figure 11 Delay times

PCB footprint (in mm)

GXL solder pads layout:

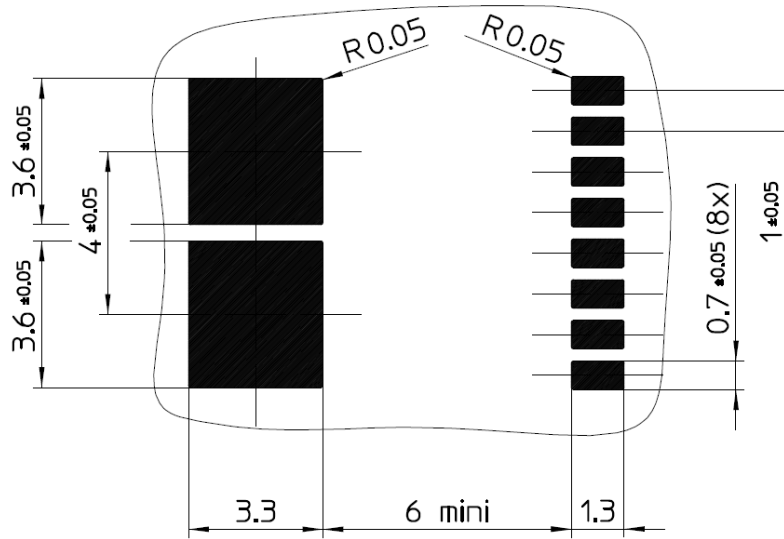


Figure 12 GXL PCB footprint

Soldering on PCB

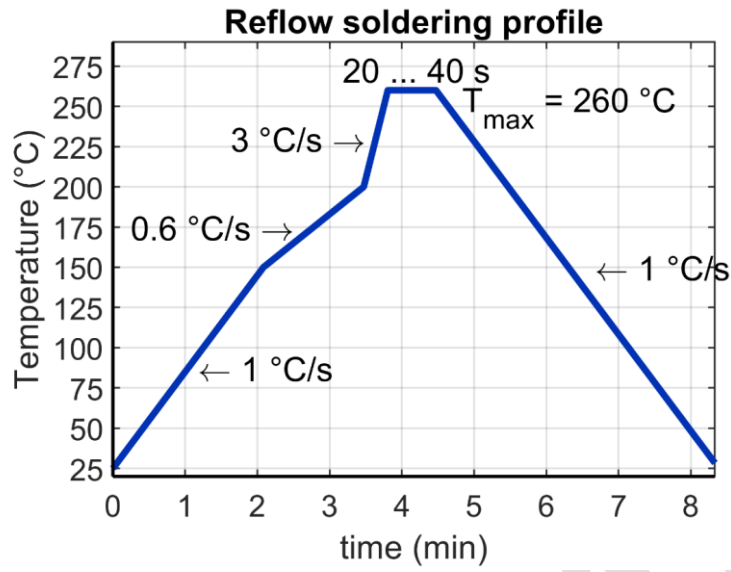


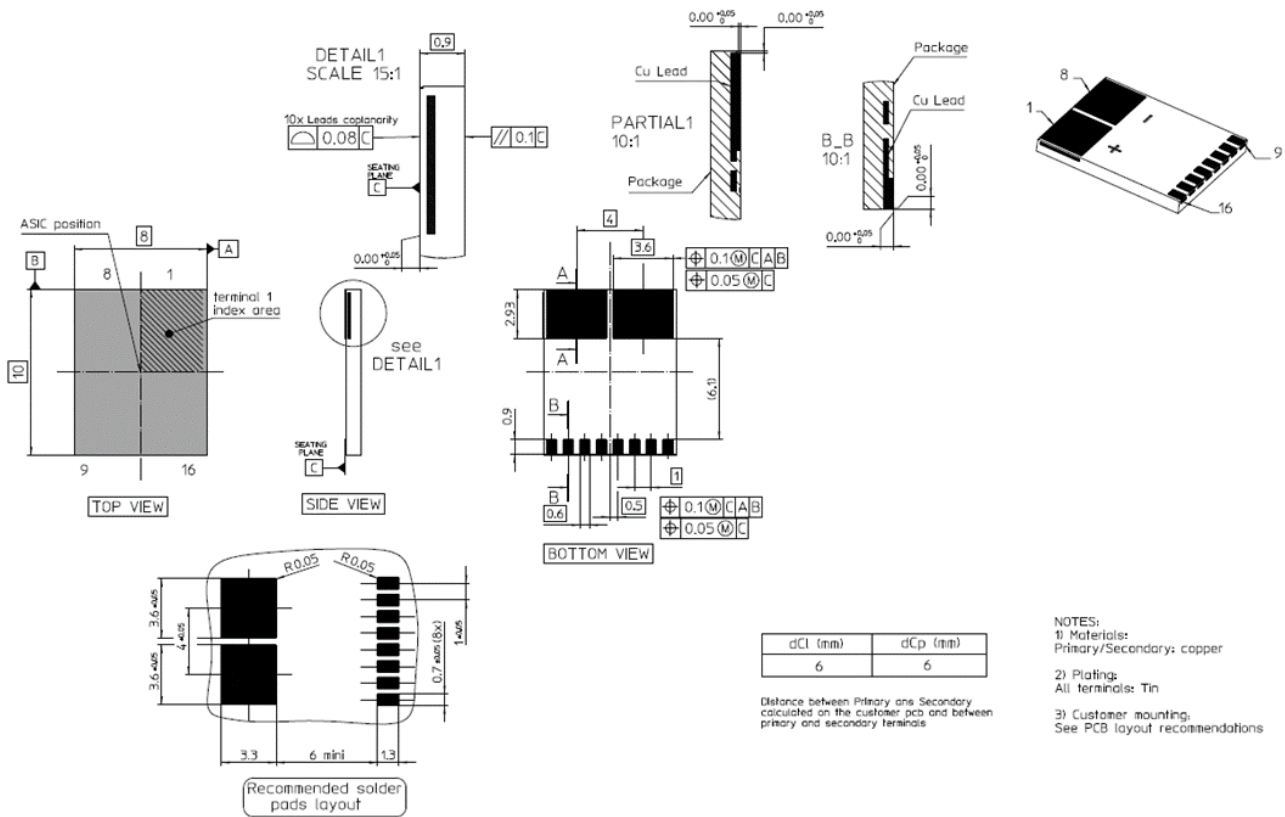
Figure 2 Soldering profile

Soldering remarks:

- GXL is targeted to be qualified MSL3 for storage and mounting purposes.
- Per JEDEC J-STD-020E for packages less than 1.6 mm thick per table 4.2 (Pb-Free Process) of the specification.
- Best practice is to use 7 zones or greater conventional reflow system, limiting the time at reflow temperature as indicated in profile above.
- Rework not recommended.

Dimensions (in mm)

GXL drawings:



Mechanical characteristics : General tolerance ± 0.15 mm

Remark: $U_{out} - U_{ref}$ is positive when I_p flows in the direction of arrow (pin 1 to pin 8).

Tape and Reel (in mm)

to be added soon

SPECIMEN

Safety



Caution

This transducer must be used in electric/electronic equipment with respect to applicable standards and safety requirements in accordance with the manufacturer's operating instructions.

Caution, risk of electrical shock



This transducer must be used in limited-energy secondary circuits according to IEC 62368-1.

When operating the transducer, certain parts of the module can carry hazardous voltages and high currents (e.g. power supply, primary conductor). Ignoring this warning can lead to injury and or/cause serious damage.

This transducer is a build-in device, whose hazardous live parts must be inaccessible after installation. A protective enclosure or additional shield could be used. Main supply must be able to be disconnected.

Although LEM applies utmost care to facilitate compliance of end products with applicable regulations during LEM product design, use of this part may need additional measures on the application side for compliance with regulations regarding EMC and protection against electric shock. Therefore, LEM cannot be held liable for any potential hazards, damages, injuries or loss of life resulting from the use of this product.

ESD susceptibility



This product is susceptible to be damaged from an ESD event and the personnel and workspace should be grounded when handling it.



Underwriters Laboratory Inc. recognized component

SPECIMEN

Revision history

Version	Date	Description
0.1	15 th of February 2024	Initial Release – target datasheet
0.4	27 th of September 2024	8 products listed, performance update based on measurements, minor cosmetics improvements.
0.5	8 th of January 2025	Correction on Total Error referred to IPM (previous version referring to Ipn)
0.6	6 th of March 2025	New legal page added at the end of the document. UL added on safety page.

SPECIMEN

The information in this document is considered accurate and reliable. However, LEM International SA and any company directly or indirectly controlled by LEM Holding SA ("LEM") do not provide any guarantee or warranty, expressed or implied, regarding the accuracy or completeness of this information and are not liable for any consequences resulting from its use. LEM shall not be responsible for any indirect, incidental, punitive, special, or consequential damages (including, but not limited to, lost profits, lost savings, business interruption, costs related to the removal or replacement of products, or rework charges) regardless of whether such damages arise from tort (including negligence), warranty, breach of contract, or any other legal theory.

LEM reserves the right to update the information in this document, including specifications and product descriptions, at any time without prior notice. Information in this document replaces any previous versions of this document. No license to any intellectual property is granted by LEM through this document, either explicitly or implicitly. Any Information and product described herein is subject to export control regulations.

LEM products may possess either unidentified or documented vulnerabilities. It is the sole responsibility of the purchaser to design and operate their applications and products in a manner that mitigates the impact of these vulnerabilities. LEM disclaims any liability for such vulnerabilities. Customers must select products with security features that best comply with applicable rules, regulations, and standards for their intended use. The purchaser is responsible for making final design decisions regarding its products and for ensuring compliance with all legal, regulatory, and security-related requirements, irrespective of any information or support provided by LEM.

LEM products are not intended, authorized, or warranted for use in life support, life-critical, or safety-critical systems or equipment, nor in applications where failure or malfunction of an LEM product could result in personal injury, death, or significant property or environmental damage. LEM and its suppliers do not assume liability for the inclusion and/or use of LEM products in such equipment or applications; thus, this inclusion and/or use is at the purchaser's own and sole risk. Unless explicitly stated that a specific LEM product is automotive qualified, it should not be used in automotive applications. LEM does not accept liability for the inclusion and/or use of non-automotive qualified products in automotive equipment or applications.

Applications that are described herein are for illustrative purposes only. LEM makes no representation or warranty that LEM products will be suitable for a particular purpose, a specified use or application. The purchaser is solely responsible for the design and operation of its applications and devices using LEM products, and LEM accepts no liability for any assistance with any application or purchaser product design. It is purchaser's sole responsibility to determine whether the LEM product is suitable and fit for the purchaser's applications and products planned, as well as for the planned application and use of purchaser's third-party customer(s).

Stressing and using LEM products at or above limiting values will cause permanent damage to the LEM product and potentially to any device embedding or operating with LEM product. Limiting values are stress ratings only and operation of the LEM product at or above conditions and limits given in this document is not warranted. Continuous or repeated exposure to limiting values will permanently and irreversibly affect the quality and reliability of the LEM product.

LEM products are sold subject to the general terms and conditions of commercial sale, as published at www.lem.com unless otherwise agreed in a specific written agreement. LEM hereby expressly rejects the purchaser's general terms and conditions for purchasing LEM products by purchaser. Any terms and conditions contained in any document issued by the purchaser either before or after issuance of any document by LEM containing or referring to the general terms and conditions of sale are explicitly rejected and disregarded by LEM, and the document issued by the purchaser is wholly inapplicable to any sale or licensing made by LEM and is not binding in any way on LEM.

© 2025 LEM INTERNATIONAL SA – All rights reserved