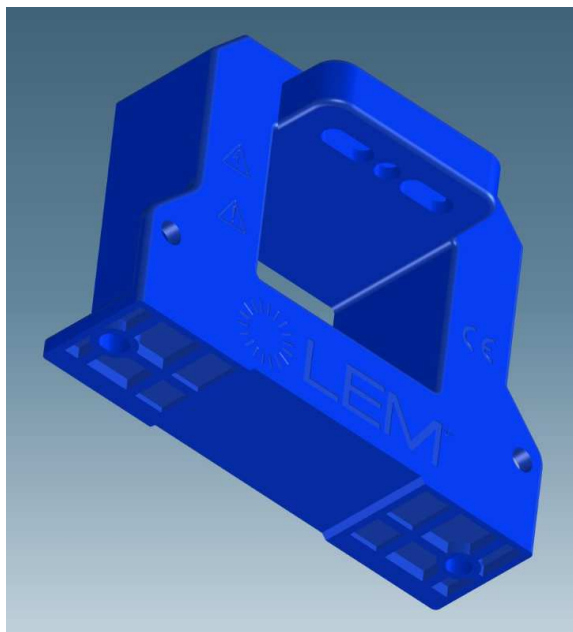
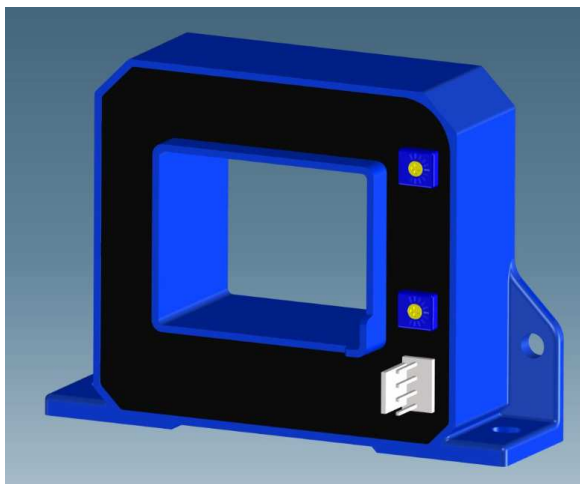




## 3D CAD Model

HAT XXXX-S/SP200

31 August 2018 TYZ



You understand that the information contained in these files may not be adequate, complete or accurate, and the products depicted in drawings, models, specifications, and other types of content may not be to the most recent version. Only the current datasheet contains latest information. You understand and agree that the Terms and Conditions of the LEM Web Sites apply to these files. The terms and Conditions are accessible on the LEM Web sites. The use of these files are provided to you conditioned on your acceptance of the Terms and Conditions, including without limitation, LEM disclaimer and use limitation.

No. 28 Linhe Str.Industrial  
Development Zone  
Shunyi  
Beijing, People Republic of China  
101300

LEM Intellectual Property SA  
Avenue Beauregard 1  
1700 Fribourg  
Switzerland

Tel. : +86 10 89 45 52 88  
Fax.: +86 10 80 48 43 03 (sales)  
Fax: +86 10 80 48 31 20 (others)  
[www.lem.com.cn](http://www.lem.com.cn)