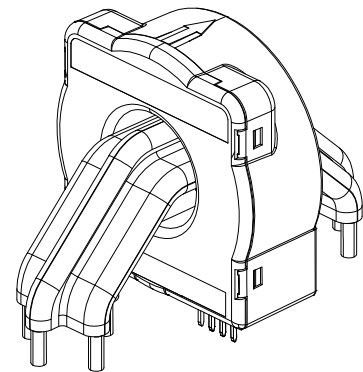


## Current Transducer CTSR 0.6-TP/SP2

$I_{PRN} = 600 \text{ mA}$

For the electronic measurement of current: DC, AC, pulsed..., with galvanic separation between the primary circuit and the secondary circuit.



### Features

- Closed loop (compensated) current transducer
- Voltage output
- Single supply voltage
- PCB mounting
- Four integrated primary conductors.

### Special feature

- No retention pin.

### Advantages

- High accuracy
- Very low offset drift over temperature
- High overload capability
- High insulation capability
- Reference pin with two modes, Ref In and Ref Out
- Degauss and test functions
- Possibility to add up to four primary wires (diam. 4.2 mm max) in addition to the already integrated primary conductors.

### Applications

- Residual current measurement
- Leakage current measurement in transformerless PV inverters
- First human contact protection of PV arrays
- Failure detection in power sources
- Symmetrical fault detection (e.g. after motor inverter)
- Leakage current detection in stacked DC sources
- Single phase or three phase nominal current measurement up to  $\pm 30 \text{ A}$  per wire (DC or AC).

### Standards

- EN 50178: 1997
- IEC 61010-1: 2010
- UL 508: 2010.

### Application Domain

- Industrial
- Suitable to fulfil VDE 0126-1-1, UL 1741.

## Safety



Caution

If the device is used in a way that is not specified by the manufacturer, the protection provided by the device may be compromised. Always inspect the electronics unit and connecting cable before using this product and do not use it if damaged. Mounting assembly shall guarantee the maximum primary conductor temperature, fulfill clearance and creepage distance, minimize electric and magnetic coupling, and unless otherwise specified can be mounted in any orientation.



Caution, risk of electrical shock

This transducer must be used in limited-energy secondary circuits SELV according to IEC 61010-1, in electric/electronic equipment with respect to applicable standards and safety requirements in accordance with the manufacturer's operating specifications.

Use caution during installation and use of this product; certain parts of the module can carry hazardous voltages and high currents (e.g. power supply, primary conductor).

Ignoring this warning can lead to injury and or/cause serious damage.

De-energize all circuits and hazardous live parts before installing the product.

All installations, maintenance, servicing operations and use must be carried out by trained and qualified personnel practicing applicable safety precautions.

This transducer is a build-in device, whose hazardous live parts must be inaccessible after installation.

This transducer must be mounted in a suitable end-enclosure.

Besides make sure to have a distance of minimum 30 mm between the primary terminals of the transducer and other neighboring components.

Main supply must be able to be disconnected.

Always inspect the flexible probe for damage before using this product.

Never connect or disconnect the external power supply while the primary circuit is connected to live parts.

Never connect the output to any equipment with a common mode voltage to earth greater than 30 V.

Always wear protective clothing and gloves if hazardous live parts are present in the installation where the measurement is carried out.

This transducer is a built-in device, not intended to be cleaned with any product. Nevertheless if the user must implement cleaning or washing process, validation of the cleaning program has to be done by himself.

When defining soldering process, please use no cleaning process only.



ESD susceptibility

The product is susceptible to be damaged from an ESD event and the personnel should be grounded when handling it.

Do not dispose of this product as unsorted municipal waste. Contact a qualified recycler for disposal.

Although LEM applies utmost care to facilitate compliance of end products with applicable regulations during LEM product design, use of this part may need additional measures on the application side for compliance with regulations regarding EMC and protection against electric shock. Therefore LEM cannot be held liable for any potential hazards, damages, injuries or loss of life resulting from the use of this product.

## Absolute maximum ratings

Parameter	Symbol	Unit	Value
Maximum supply voltage	$U_{C \max}$	V	7
Maximum primary conductor temperature	$T_{B \max}$	°C	110
Primary withstand peak current (maximum)	$\hat{I}_{P \max}$	A	3300

Stresses above these ratings may cause permanent damage. Exposure to absolute maximum ratings for extended periods may degrade reliability.

## UL 508: Ratings and assumptions of certification

File # E189713 Volume: 2 Section: 3

### Standards

- CSA C22.2 NO. 14-10 INDUSTRIAL CONTROL EQUIPMENT - Edition 11 - Revision Date 2011/08/01
- UL 508 STANDARD FOR INDUSTRIAL CONTROL EQUIPMENT - Edition 17 - Revision Date 2010/04/15

### Ratings

Parameter	Symbol	Unit	Value Version P	Value Version TP
Primary involved potential*		V AC/DC	600	1000
Ambient operating temperature	$T_A$	°C	105	
Primary current	$I_P$	A	According to series primary currents	
Supply voltage	$U_C$	V DC	7	
Output voltage referred to $U_{ref}$ (Test current)	$U_{out}$	V	0 to 7	

\* Environmental: For use in Pollution degree 3.

### Conditions of acceptability

*When installed in the end-use equipment, consideration shall be given to the following:*

- 1 - A suitable enclosure shall be provided in the end-use application.*
- 2 - The insulation between the primary and the secondary sensing circuits were evaluated with 4250 V AC for CTSR 0.6-TP/SP and 2200 V AC for CTSR 0.6-P in dielectric voltage withstand test.*
- 5 - CTSR series is intended to be mounted on the printed wiring board of the end-use equipment.*
- 7 - The uninsulated live parts of primary feeder and secondary circuit clearance spacing of Model CTSR XX-P series shall maintain at least 5.5 mm apart.*
- 8 - Primary feeder of the devices shall be connected after an overvoltage device or system which has been evaluated by the Standard for Transient Voltage Surge Suppressors, UL 1449.*

### Marking

Only those products bearing the UL or UR Mark should be considered to be Listed or Recognized and covered under UL's Follow-Up Service. Always look for the Mark on the product.

**Insulation coordination**

Parameter	Symbol	Unit	Value	Comment
RMS voltage for AC insulation test, 50 Hz, 1 min	$U_d$	kV	6	
Impulse withstand voltage 1.2/50 $\mu$ s	$U_{Ni}$	kV	11.2	
Partial discharge RMS test voltage ( $q_m < 10$ pC)	$U_t$	kV	2.475	
Clearance (pri. - pri.)	$d_{Cl}$	mm	6.7	Shortest distance through air
Creepage distance (pri. - pri.)	$d_{Cp}$	mm	6.7	Shortest path along device body
Clearance (pri. - sec.)	$d_{Cl}$	mm	13.5	Shortest distance through air
Creepage distance (pri. - sec.)	$d_{Cp}$	mm	33.2	Shortest path along device body

**When mounted on a PCB** (with recommended hole and pad diameters, see paragraph "PCB footprint").

Clearance (pri. - pri.)	$d_{Cl}$	mm	5.6	Shortest distance through air
Creepage distance (pri. - pri.)	$d_{Cp}$	mm	5.6	Shortest path along device body
Clearance (pri. - sec.)	$d_{Cl}$	mm	12.5	Shortest distance through air
Creepage distance (pri. - sec.)	$d_{Cp}$	mm	12.5	Shortest path along device body
Comparative tracking index	$CTI$	V	600	
Application example	-	V	1000	Reinforced insulation, CAT III, PD2 non uniform field according to EN 50178
Application example	-	V	1500	Reinforced insulation, CAT III, PD3 non uniform field according to EN 50178, IEC 61010

**Environmental and mechanical characteristics**

Parameter	Symbol	Unit	Min	Typ	Max	Comment
Ambient operating temperature	$T_A$	°C	-40		105	
Ambient storage temperature	$T_{A\ st}$	°C	-50		105	
Mass	$m$	g		55		

## Electrical data

## CTSR 0.6-TP/SP2

At  $T_A = 25\text{ °C}$ ,  $U_C = +5\text{ V}$ , output voltage referred to  $U_{ref}$ , unless otherwise noted (see Min., Max., typical definition paragraph) in page 6.

Parameter	Symbol	Unit	Min	Typ	Max	Comment
Primary nominal residual RMS current	$I_{PRN}$	mA		600		
Primary residual current, measuring range	$I_{PRM}$	mA	-850		850	
Supply voltage	$U_C$	V	4.75	5	5.25	
Current consumption	$I_C$	mA		17.5	21.6	+ $I_P$ (mA)/ $N_S$ With $N_S = 1000$ turns -40 ... 105 °C
Output voltage referred to $U_{ref}$ (Test current)	$U_{out}$	V		0.3	0.5	Note <sup>1)</sup>
Reference voltage @ $I_P = 0$	$U_{ref}$	V	0.4	0.75	1.1	Note <sup>1)</sup>
External reference voltage	$U_{ref}$	V	2.495	2.5	2.505	Internal reference
Electrical offset current referred to primary <sup>2)</sup>	$I_{OE}$	V	2.3		4	Internal reference of $U_{ref}$ input = 499 Ω Note <sup>1)</sup>
Temperature coefficient of $U_{ref}$	$TCU_{ref}$	mA	-24	4.2	24	
Temperature coefficient of $U_{ref}$	$TCU_{ref}$	ppm/K			±50	-40 ... 105 °C
Temperature coefficient of $U_{OE}$ @ $I_P = 0$	$TCU_{OE}$	ppm/K			±520	ppm/K of 2.5 V -40 ... 105 °C
Nominal sensitivity	$S_N$	V/A		2.476		
Sensitivity error <sup>2)</sup>	$\varepsilon_S$	%	-0.7	0.3	0.7	$R_L > 500\text{ k}\Omega$
Temperature coefficient of $S$	$TCS$	ppm/K			±100	-40 ... 105 °C
Linearity error	$\varepsilon_L$	% of $I_{PRM}$		0.4	1.3	
Magnetic offset current ( $1000 \times I_{PRN}$ ) referred to primary	$I_{OM}$	mA		17		
RMS noise voltage (1 Hz ... 10 kHz)	$U_{no}$	mV		4		$R_L > 500\text{ k}\Omega$
Delay time to 10 % of the final output value $I_{PN}$ step	$t_{D10}$	μs		5		$R_L > 500\text{ k}\Omega$ , $di/dt > 5\text{ A}/\mu\text{s}$
Delay time to 90 % of the final output value $I_{PN}$ step	$t_{D90}$	μs		30		$R_L > 500\text{ k}\Omega$ , $di/dt > 5\text{ A}/\mu\text{s}$
Frequency bandwidth (-1 dB)	$BW$	kHz		9.5		$R_L > 500\text{ k}\Omega$
Error <sup>3)</sup>	$\varepsilon$	%			1.5	$= (\varepsilon_S^2 + \varepsilon_L^2)^{1/2}$

**Notes:** <sup>1)</sup> See "Application information" section.

<sup>2)</sup> Only with a primary nominal residual current, see paragraph "Primary nominal residual current and primary nominal current".

<sup>3)</sup> Total error @  $T_A$  and  $I_P$ :  $\varepsilon_{tot}(T_A) = \left( \varepsilon^2 + \left( \frac{TCS}{10^6} \times 100 \times (T_A - 25) \right)^2 + \left( \frac{TCU_{OE}}{10^6} \times 2.5 \times (T_A - 25) / S_N \times 100 / I_P \right)^2 \right)^{1/2}$ .

## Definition of typical, minimum and maximum values

Minimum and maximum values for specified limiting and safety conditions have to be understood as such as well as values shown in “typical” graphs.

On the other hand, measured values are part of a statistical distribution that can be specified by an interval with upper and lower limits and a probability for measured values to lie within this interval.

Unless otherwise stated (e.g. “100 % tested”), the LEM definition for such intervals designated with “min” and “max” is that the probability for values of samples to lie in this interval is 99.73 %.

For a normal (Gaussian) distribution, this corresponds to an interval between  $-3\sigma$  and  $+3\sigma$ . If “typical” values are not obviously mean or average values, those values are defined to delimit intervals with a probability of 68.27 %, corresponding to an interval between  $-\sigma$  and  $+\sigma$  for a normal distribution.

Typical, maximal and minimal values are determined during the initial characterization of the product.

## Typical performance characteristics

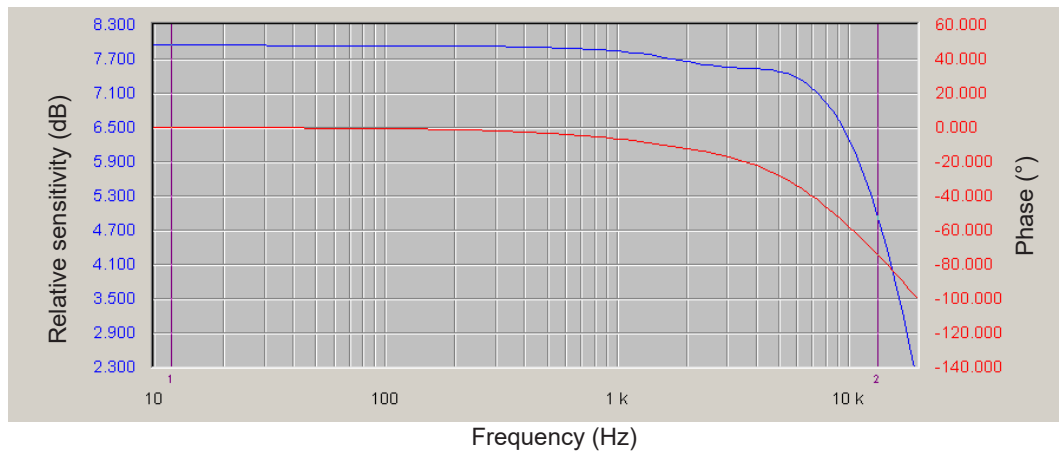


Figure 1: Frequency response

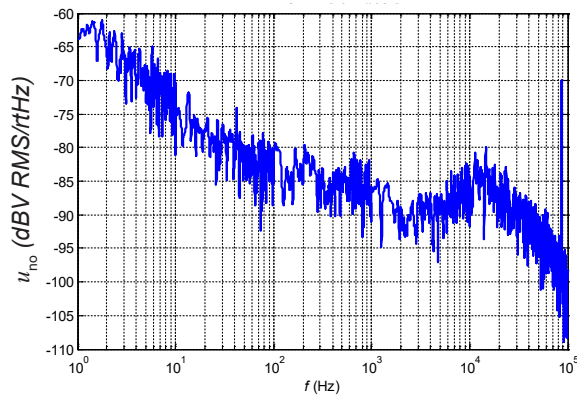


Figure 2: Output noise voltage spectral density

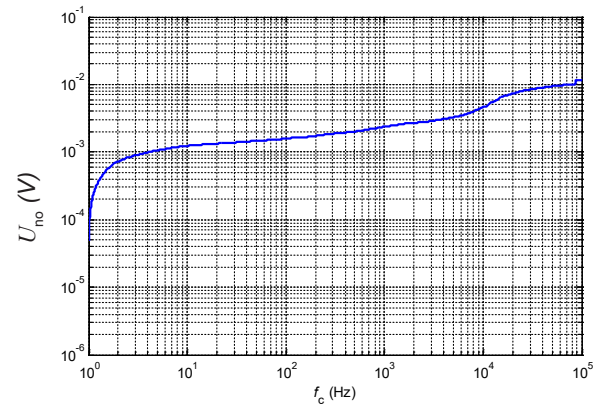


Figure 3: Output noise, cumulated RMS

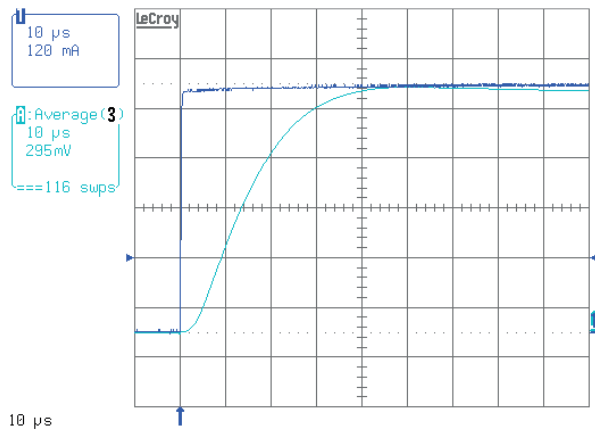


Figure 4: Typical step response

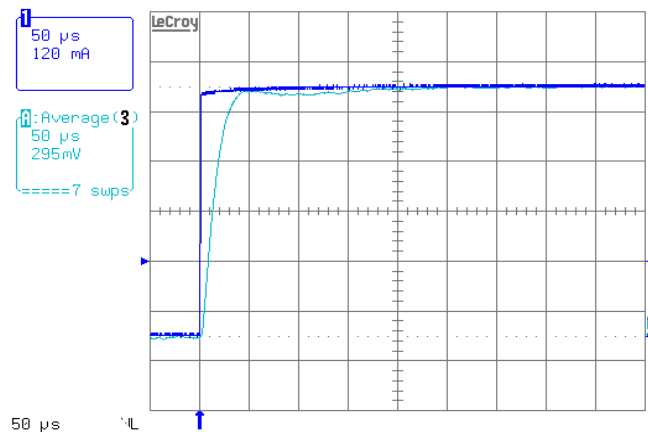


Figure 5: Typical step response

## Application information

### Filtering, decoupling CTSR transducer

#### Supply voltage $U_c$ (5 V)

The CTSR transducers have internal decoupling capacitors, but in the case of a power supply track on the application PCB having a high impedance, it is advised to provide local decoupling, 100 nF or more, located close to the transducer.

#### Reference $U_{ref}$

Ripple present on the  $U_{ref}$  pin can be filtered with a low value of capacitance because of the internal 499 ohm series resistance. The CTSR transducers have an internal capacitor of 22 nF between  $U_{ref}$  pin and Gnd pin and the maximum filter capacitance value which could be added is 1  $\mu$ F. Adding a larger decoupling capacitor will increase the activation delay of degauss.

#### Output $U_{out}$

The CTSR transducers have an internal low pass filter 470 ohm/22 nF; if a decoupling capacitor is added on  $U_{out}$  pin, the bandwidth and the response time will be affected. In case of short circuit, the transducer CTSR can source or sink up to a maximum of 10 mA on its output  $U_{out}$ .

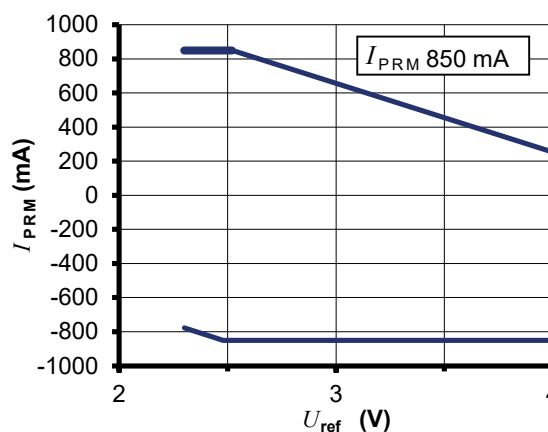
### Using an external reference voltage

If the  $U_{ref}$  pin of the transducer is not used it could be either left unconnected or filtered according to the previous paragraph "Reference  $U_{ref}$ ".

The  $U_{ref}$  pin has two modes Ref out and Ref In:

- In the Ref out mode the 2.5 V internal precision reference is used by the transducer as the reference point for bipolar measurements; this internal reference is connected to the  $U_{ref}$  pin of the transducer through a 499 ohms resistor. It tolerates sink or source currents up to  $\pm 5$  mA, but the 499 ohms resistor prevents this current to exceed these limits.
- In the Ref In mode, an external reference voltage is connected to the  $U_{ref}$  pin; this voltage is specified in the range 2.3 to 4 V and is directly used by the transducer as the reference point for measurements. The external reference voltage  $U_{ref}$  must be able:
  - o either to source a typical current of  $\frac{U_{ref} - 2.5}{499}$ , the maximum value will be 3 mA when  $U_{ref} = 4$  V.
  - o or to sink a typical current of  $\frac{2.5 - U_{ref}}{499}$ , the maximum value will be 0.4 mA when  $U_{ref} = 2.3$  V.

The following graphs show how the measuring range of the transducer depends on the external reference voltage value  $U_{ref}$  ( $U_c = 5$  V).



Upper limit:  $I_p = 850$  mA ( $U_{ref} = 2.3 \dots 2.52$  V)  
 Upper limit:  $I_p = -403.88 * U_{ref} + 1867.93$  ( $U_{ref} = 2.52 \dots 4$  V)  
 Lower limit:  $I_p = -403.88 * U_{ref} + 151.45$  ( $U_{ref} = 2.3 \dots 2.48$  V)  
 Lower limit:  $I_p = -850$  mA ( $U_{ref} = 2.48 \dots 4$  V)



## Primary nominal residual current and primary nominal current

The primary nominal residual current is the sum of the instantaneous values of all currents flowing through the aperture of the transducer. The primary nominal current is the current flowing through any conductor placed into the aperture of the transducer. The presence of a primary nominal current DC or AC leads to an additional uncertainty. For example, with a primary nominal current of 30 A the uncertainty referred to primary is typical 4.3 mA.

## CTSR transducer in Test mode

When the  $U_{ref}$  pin is forced at a low level voltage between 0 and 1 V and is maintained at this level, the output voltage  $U_{out}$  of CTSR transducer exhibits a fixed value (see specification) as if it measured a primary test current. The activation time of test mode is min 30 ms. The CTSR transducer can be maintained in test mode as long as needed for checking that it is fully operating.

## CTSR transducer in Degauss mode

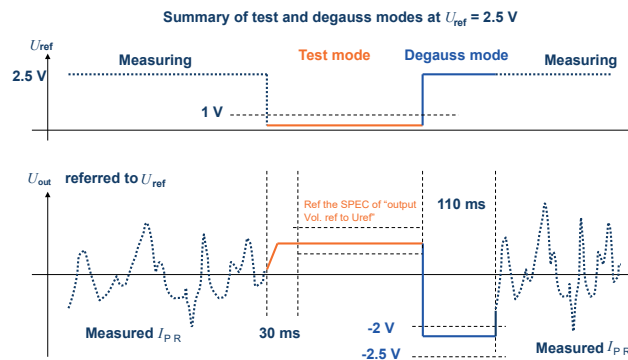
The CTSR transducers go in degauss mode automatically at each power on or on demand by using the  $U_{ref}$  pin.

At power on:

A degauss is automatically generated at each power on of the CTSR transducer; during degaussing the output voltage  $U_{out}$  is maintained at 0.3 V typ. (max 0.5 V). After c.a. 110 ms, the output voltage  $U_{out}$  is released and takes the normal operation level in relation with the measured primary current.

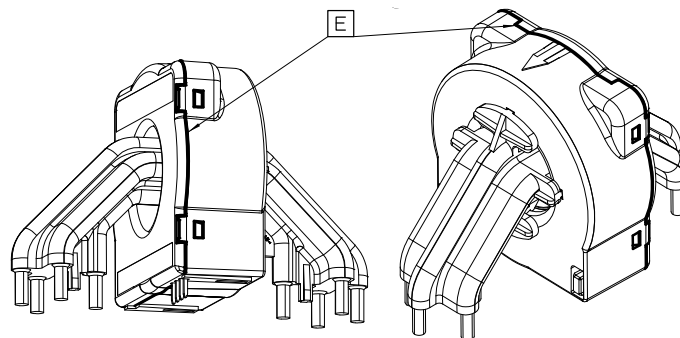
Using  $U_{ref}$  pin:

When the pin  $U_{ref}$  is released from the Low level voltage defined in the Test mode above, there is a rising edge on  $U_{ref}$  which generates an automatic degauss. The activation of degauss takes typically 40  $\mu$ s after releasing  $U_{ref}$  pin, then degauss lasts typically 110 ms.

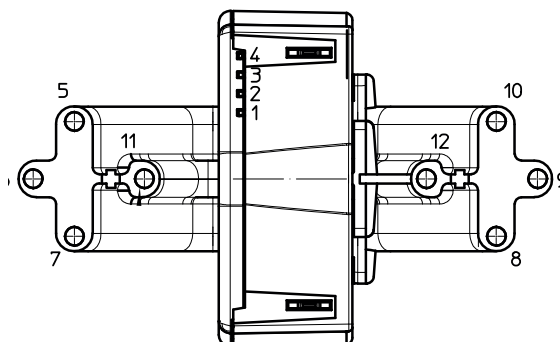


## Isolation around the CTSR transducer housing

Due to the joint between the case and the cover of the CTSR transducer, there is some isolation distance to respect when primary conductors pass around the CTSR housing. The figure below shows the joint and the apertures where the clearance between the secondary part inside the CTSR transducer and the surface of the housing is 3 mm (label E).



## Integrated primary conductors

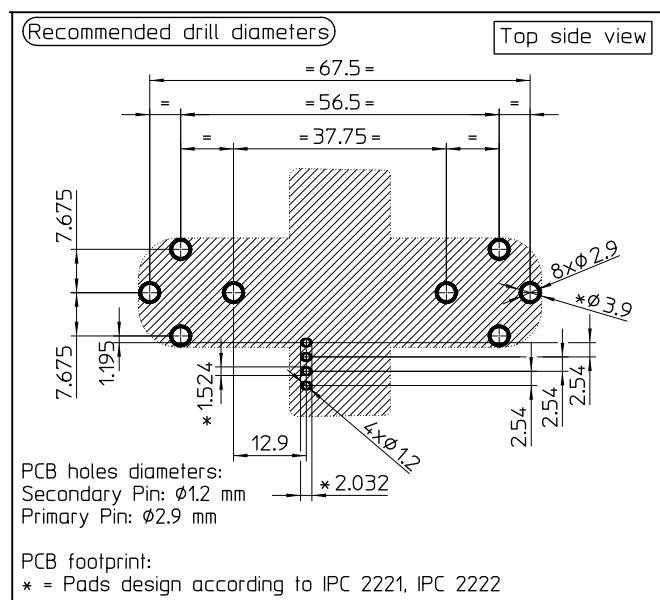


The four integrated primary conductors have a diameter of 2.5 mm. The three conductors 5-10, 6-9 and 7-8 could be used as the lines in a three phase system; the conductor 11-12 could be used either as the neutral in a three phase system or as a test current conductor.

Primary conductor	Typical primary conductor resistance $R_p$ (mOhm)
5-10, 7-8	0.32
6-9	0.36
11-12	0.26

The maximum primary current per conductor must comply with the primary conductor temperature specified in paragraph "Absolute maximum ratings".

## PCB footprint

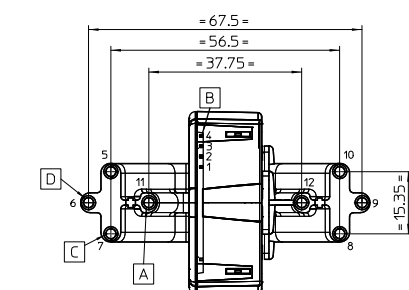


## Assembly on PCB

- Recommended PCB hole diameter 1.2 mm for secondary pin  
2.9 mm for primary pin
- Maximum PCB thickness 2.4 mm
- Wave soldering profile maximum 260 °C, 10 s
- No clean process only

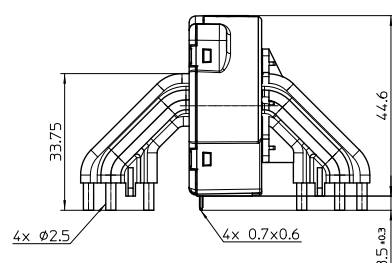
Any primary conductor must be placed in the PCB at the requested insulation distance regarding the secondary side (see also paragraph “Insulation around the CTSR transducer housing”).

**Dimensions** (in mm, general tolerance  $\pm 0.3$  mm)



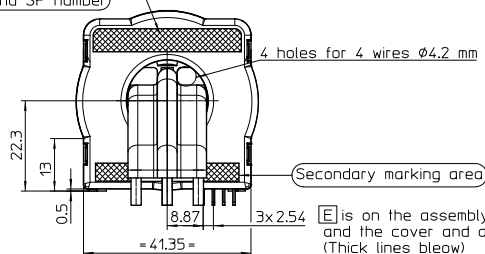
On the Transducer		
	$d_{Cl}$	$d_{Cp}$
A-B	13.5 mm	33.2 mm
A-C	9.4 mm	9.4 mm
C-D	6.7 mm	6.7 mm
B-E	3 mm	3 mm

On the Customer's PCBA		
	$d_{Cl}$	$d_{Cp}$
A-B	12.5 mm	12.5 mm
A-C	8.1 mm	8.1 mm
C-D	5.6 mm	5.6 mm

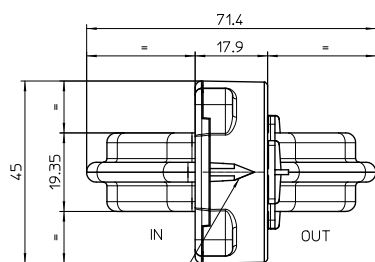


Marking area:  
LEM logo  
Model type  
Date code and SP number

Note:  
Phases Pin number: 5, 6, 7, 8, 9, 10  
Test or neutral Pin number: 11, 12

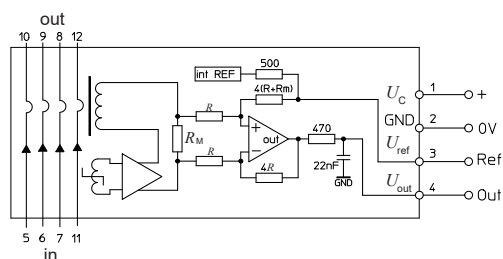


**E** is on the assembly joint between the case and the cover and also on the clips aperture. (Thick lines blew)



Arrow in positive current direction,

## Connection



## IMPORTANT NOTICE

The information in this document is considered accurate and reliable. However, LEM International SA and any company directly or indirectly controlled by LEM Holding SA ("LEM") do not provide any guarantee or warranty, expressed or implied, regarding the accuracy or completeness of this information and are not liable for any consequences resulting from its use. LEM shall not be responsible for any indirect, incidental, punitive, special, or consequential damages (including, but not limited to, lost profits, lost savings, business interruption, costs related to the removal or replacement of products, or rework charges) regardless of whether such damages arise from tort (including negligence), warranty, breach of contract, or any other legal theory.

LEM reserves the right to update the information in this document, including specifications and product descriptions, at any time without prior notice. Information in this document replaces any previous versions of this document. No license to any intellectual property is granted by LEM through this document, either explicitly or implicitly. Any Information and product described herein is subject to export control regulations.

LEM products may possess either unidentified or documented vulnerabilities. It is the sole responsibility of the purchaser to design and operate their applications and products in a manner that mitigates the impact of these vulnerabilities. LEM disclaims any liability for such vulnerabilities. Customers must select products with security features that best comply with applicable rules, regulations, and standards for their intended use. The purchaser is responsible for making final design decisions regarding its products and for ensuring compliance with all legal, regulatory, and security-related requirements, irrespective of any information or support provided by LEM.

LEM products are not intended, authorized, or warranted for use in life support, life-critical, or safety-critical systems or equipment, nor in applications where failure or malfunction of an LEM product could result in personal injury, death, or significant property or environmental damage. LEM and its suppliers do not assume liability for the inclusion and/or use of LEM products in such equipment or applications; thus, this inclusion and/or use is at the purchaser's own and sole risk. Unless explicitly stated that a specific LEM product is automotive qualified, it should not be used in automotive applications. LEM does not accept liability for the inclusion and/or use of non-automotive qualified products in automotive equipment or applications.

Applications that are described herein are for illustrative purposes only. LEM makes no representation or warranty that LEM products will be suitable for a particular purpose, a specified use or application. The purchaser is solely responsible for the design and operation of its applications and devices using LEM products, and LEM accepts no liability for any assistance with any application or purchaser product design. It is purchaser's sole responsibility to determine whether the LEM product is suitable and fit for the purchaser's applications and products planned, as well as for the planned application and use of purchaser's third-party customer(s).

Stressing and using LEM products at or above limiting values will cause permanent damage to the LEM product and potentially to any device embedding or operating with LEM product. Limiting values are stress ratings only and operation of the LEM product at or above conditions and limits given in this document is not warranted. Continuous or repeated exposure to limiting values will permanently and irreversibly affect the quality and reliability of the LEM product.

LEM products are sold subject to the general terms and conditions of commercial sale, as published at [www.lem.com](http://www.lem.com) unless otherwise agreed in a specific written agreement. LEM hereby expressly rejects the purchaser's general terms and conditions for purchasing LEM products by purchaser. Any terms and conditions contained in any document issued by the purchaser either before or after issuance of any document by LEM containing or referring to the general terms and conditions of sale are explicitly rejected and disregarded by LEM, and the document issued by the purchaser is wholly inapplicable to any sale or licensing made by LEM and is not binding in any way on LEM.

© 2025 LEM INTERNATIONAL SA – All rights reserved