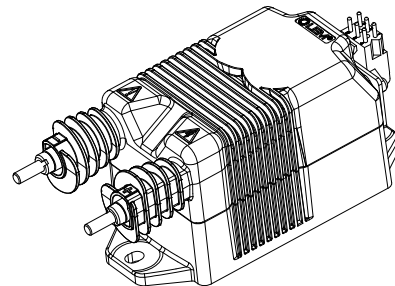


Voltage Transducer DVM 4000-DT/SP1

$$U_{PN} = 4000 \text{ V}$$

For the electronic measurement of voltage: DC, AC, pulsed..., with galvanic separation between the primary and the secondary circuit.



Features

- Unipolar and insulated measurement up to 6000 V
- Unipolar supply voltage
- Voltage output
- Input connections with M5 studs
- Voltage threshold output.

Special Features

- Customer marking: DTR 0000440784
- Connection to secondary circuit on SMS6GE6 Burndy connector.

Advantages

- Low consumption and low losses
- Compact design
- Very low sensitivity to common mode voltage variations
- Excellent accuracy (offset, sensitivity, linearity)
- Low temperature drift
- High immunity to external interferences.

Applications

- Single or three phase inverters
- Propulsion and braking choppers
- Propulsion converters
- Auxiliary converters
- High power drives
- Substations.

Standards

- EN 50155: 2021
- EN 50121-3-2: 2016
- EN 50124-1: 2017
- IEC 61010-1: 2010
- IEC 61800-1: 1997
- IEC 61800-2: 2015
- IEC 61800-3: 2004
- IEC 61800-5-1: 2007
- IEC 62109-1: 2010
- UL 347 ¹⁾: 2016.

Application Domain

- Industrial
- Railway (fixed installations and onboard).

Note: ¹⁾ When used with UL 347 Isolator N° 92.24.06.420.0.

Safety



Caution

If the device is used in a way that is not specified by the manufacturer, the protection provided by the device may be compromised. Always inspect the electronics unit and connecting cable before using this product and do not use it if damaged. Mounting assembly shall guarantee the maximum primary conductor temperature, fulfill clearance and creepage distance, minimize electric and magnetic coupling, and unless otherwise specified can be mounted in any orientation.



Caution, risk of electrical shock

This transducer must be used in limited-energy secondary circuits SELV according to IEC 61010-1, in electric/electronic equipment with respect to applicable standards and safety requirements in accordance with the manufacturer's operating specifications.

Use caution during installation and use of this product; certain parts of the module can carry hazardous voltages and high currents (e.g. power supply, primary conductor).

Ignoring this warning can lead to injury and or/cause serious damage.

De-energize all circuits and hazardous live parts before installing the product.

All installations, maintenance, servicing operations and use must be carried out by trained and qualified personnel practicing applicable safety precautions.

This transducer is a build-in device, whose hazardous live parts must be inaccessible after installation.

This transducer must be mounted in a suitable end-enclosure.

Besides make sure to have a distance of minimum 30 mm between the primary terminals of the transducer and other neighboring components.

Main supply must be able to be disconnected.

Never connect or disconnect the external power supply while the primary circuit is connected to live parts.

Never connect the output to any equipment with a common mode voltage to earth greater than 30 V.

This transducer is a built-in device, not intended to be cleaned with any product. Nevertheless if the user must implement cleaning or washing process, validation of the cleaning program has to be done by himself.



ESD susceptibility

The product is susceptible to be damaged from an ESD event and the personnel should be grounded when handling it.

Do not dispose of this product as unsorted municipal waste. Contact a qualified recycler for disposal.



Underwriters Laboratory Inc. recognized component

Absolute maximum ratings

Parameter	Symbol	Unit	Value
Maximum DC supply voltage $\equiv (U_p = 0 \text{ V}, 0.1 \text{ s})$	$\hat{U}_{C \text{ max}}$	V	34.6
Maximum DC supply voltage \equiv (working) $(-40 \dots +85 \text{ }^\circ\text{C})$	$U_{C \text{ max}}$	V	30
Electrostatic discharge voltage (HBM - Human Body Model)	$U_{\text{ESD HBM}}$	kV	4
Maximum DC common mode voltage	$U_{\text{HV}+} + U_{\text{HV}-}$ and $ U_{\text{HV}+} - U_{\text{HV}-} $	kV	≤ 6.3 $\leq U_{\text{PM}}$

Absolute maximum ratings apply at 25 °C unless otherwise noted.

Stresses above these ratings may cause permanent damage.

Exposure to absolute maximum ratings for extended periods may degrade reliability.

Environmental and mechanical characteristics

Parameter	Symbol	Unit	Min	Typ	Max	Comment
Ambient operating temperature	T_A	°C	-40		70	
Ambient storage temperature	$T_{A \text{ st}}$	°C	-50		90	
Equipment operating temperature class						EN 50155: OT6
Switch-on extended operating temperature class						EN 50155: ST0
Rapid temperature variation class						EN 50155: H1
Conformal coating type						EN 50155: PC2
Relative humidity	RH	%			95	Class 3K3 according to Table 1 of EN 60721-3-3
Shock & vibration categorie and class						EN 50155: 1B (EN 61373)
Mass	m	g		375		
Ingress protection rating				IP40		IEC 60529 (Indoor use)
Pollution degree					PD4	Insulation voltage accordingly
Altitude		m			2000 ¹⁾	
Impact rating				IK06		According to IEC 62262

Note: ¹⁾ Insulation coordination at 2000 m.

RAMS DATA

Parameter	Symbol	Unit	Min	Typ	Max	Comment
Useful life class						EN 50155: L4
Mean failure rate	$\bar{\lambda}$	h^{-1}		1/1827550		According to IEC 62380 $T_A = 45 \text{ }^\circ\text{C}$ ON: 20 hrs/day ON/OFF: 320 cycles/year $U_C = \pm 24 \text{ V}$, $U_p = 4000 \text{ V}$

UL 347: Ratings and assumptions of certification

File # E315896 Volume: 1 Section: 3

Standards

- CSA C22.2 No. 253 Medium-Voltage AC Contactors, Controllers, and Control Centers
- UL 347 Standards for Safety for Medium-Voltage AC Contactors, Controllers, and Control Centers.

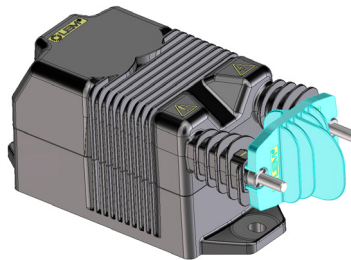
Conditions of acceptability

When installed in the end-use equipment, consideration shall be given to the following:

- 1 - *These devices must be mounted in a suitable end-use enclosure.*
- 2 - *The terminals have not been evaluated for field wiring.*
- 3 - *The rated Basic Insulation Level (BIL) is 20 kV for this device, after performing Impulse Withstand Tests. Additional testing will be required if a higher BIL rating is desired.*
- 4 - *For products rated more than 2500 V, the specific kit model "UL 347 isolator" shall be mounted to the DVM.*
- 5 - *The products have been evaluated for a maximum surrounding air temperature of 85 °C..*
- 6 - *Low voltage circuits are intended to be powered by a circuit derived from an isolating source (such as a transformer, optical isolator, limiting impedance or electro-mechanical relay) and having no direct connection back to the primary circuit (other than through the grounding means).*

Marking

Only those products bearing the UL or UR Mark should be considered to be Listed or Recognized and covered under UL's Follow-Up Service. Always look for the Mark on the product.



Assembly of UL 347 Isolator on primary studs.
UL 347 Isolator, reference number 92.24.06.420.0 provided.

Insulation coordination

Parameter	Symbol	Unit	≤ Value	Comment
RMS voltage for AC insulation test, 50 Hz, 1 min	U_d	kV	12	
Impulse withstand voltage 1.2/50 μ s	U_{Ni}	kV	30	According to IEC 62497-1
Partial discharge RMS test voltage ($q_m < 10$ pC)	U_t	V	5000	
Case material	-	-	V0	
Comparative tracking index	CTI		600	According to UL 94

Between primary and secondary

Clearance	d_{Cl}	mm	74	Shortest distance through air
Creepage distance	d_{Cp}	mm	101	Shortest path along device body
Application example RMS voltage line-to-neutral		V	1000	Reinforced insulation according to IEC 60664-1, IEC 61010-1 or IEC 62477-1 CAT III, PD2
Application example System voltage RMS		V	3600	Basic insulation according to IEC 61800-5-1 CAT III, PD2
Application example Rated insulation RMS voltage	U_{Nm}	V	4800	Basic insulation according to IEC 62497-1 CAT III, PD2, Rolling stock
Application example Rated insulation RMS voltage	U_{Nm}	V	3700	Reinforced insulation according to IEC 62479-1 CAT II, PD2

Between primary and ground (fastening screw M6 head)

Clearance	d_{Cl}	mm	45	Shortest distance through air
Creepage distance	d_{Cp}	mm	101	Shortest path along device body
Application example Rated insulation RMS voltage		V	1000	Reinforced insulation according to IEC 61010-1 CAT III, PD2

Between secondary and ground (fastening screw M6 head)

Clearance	d_{Cl}	mm	10	Shortest distance through air
Creepage distance	d_{Cp}	mm	26	Shortest path along device body
Application example Rated insulation RMS voltage		V	1000	Basic insulation according to IEC 61010-1 CAT III, PD2

Electrical threshold detection data

At $T_A = 25\text{ }^{\circ}\text{C}$, $+U_C = +24\text{ V}$, $R_M = 2\text{ k}\Omega$.

Parameter	Symbol	Unit	Min	Typ	Max	Comment
Primary high threshold voltage	$U_{P\ H\ Th}$	V		500		$\pm 10\%$
Primary low threshold voltage	$U_{P\ L\ Th}$	V		400		$\pm 10\%$
Maximum secondary (output) voltage when threshold detection is active	$U_{S\ Th\ max}$	V			30	
Maximum secondary (output) current when threshold detection is active	$I_{S\ Th\ max}$	mA			100	No overcurrent protection
Minimum load resistance, threshold detection output	$R_{L\ Th\ min}$	Ω	300			Open drain output
Delay time of threshold output for high value	$t_{D\ H\ Th}$	ms		2		0 to U_{PN} transition
Delay time of threshold output for low value	$t_{D\ L\ Th}$	ms		700		U_{PN} to 0 transition

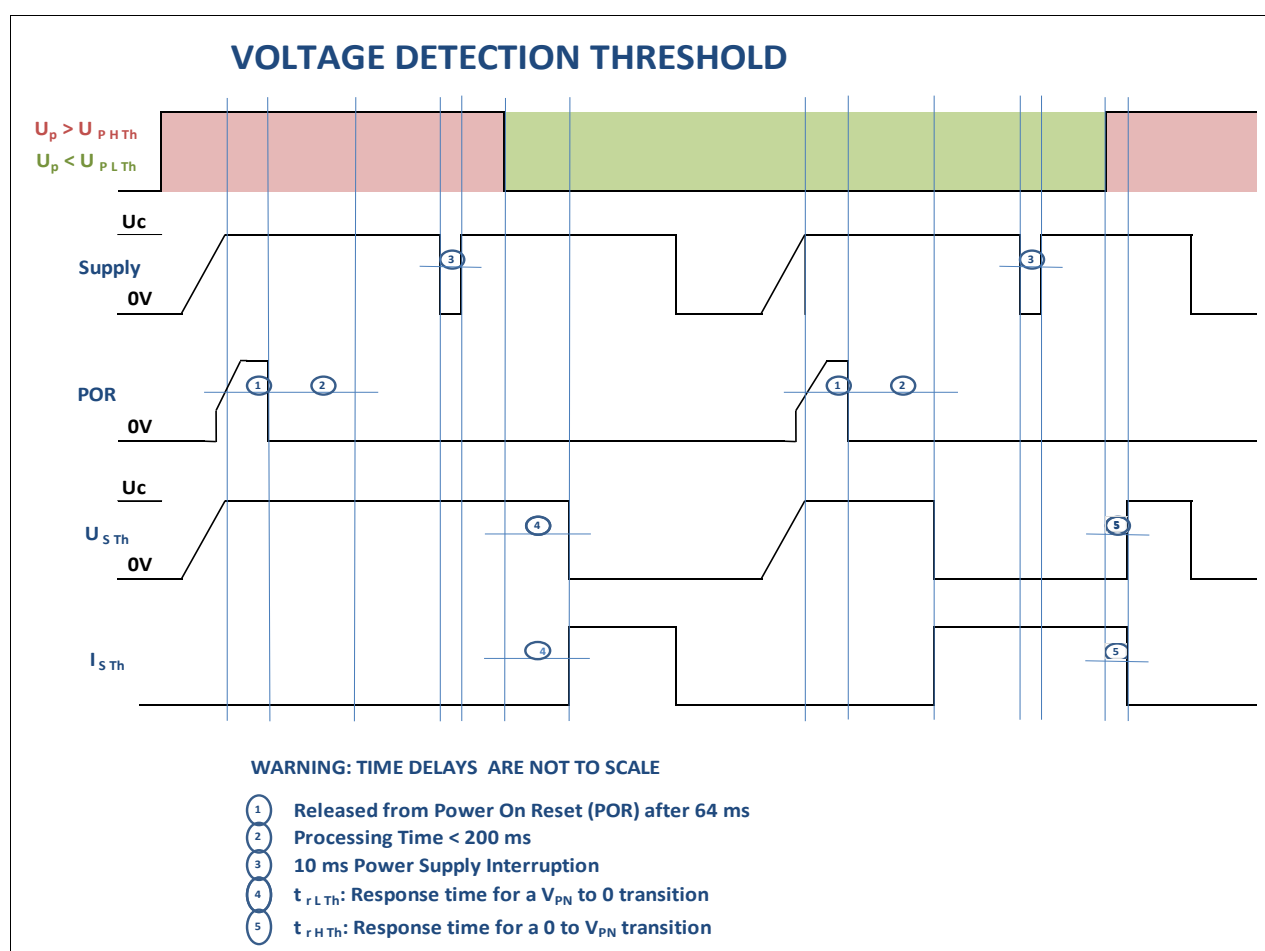


Figure 1: Voltage detection threshold timing diagram

Electrical data

At $T_A = T_{A \min} \dots T_{A \max}$, $U_C = +24 \text{ V}$, $R_M = 2 \text{ k}\Omega$, unless otherwise noted (see Min, Max, typ, definition paragraph in [page 8](#)).

Parameter	Symbol	Unit	Min	Typ	Max	Comment
Primary nominal DC voltage (continuous)	U_{PNDC}	V		4000		
Primary nominal AC RMS voltage (continuous)	U_{PNAC}	V		4000		
Primary voltage, measuring range	U_{PM}	V	0		6000	
Measuring resistance	R_M	Ω	2000			
Secondary nominal RMS voltage	U_{SN}	V		6.66		
Secondary voltage	U_S	V	0		10	
DC supply voltage \equiv	U_C	V	16.8		30	
DC current consumption \equiv	I_C	mA		50		@ $U_C = +24 \text{ V}$ at $U_P = 0 \text{ V}$ and $I_{Sth} = 0$
Power consumption $U_P = 0 \text{ V}$ @ U_C	P_C	W		1.2		@ $U_C = +24 \text{ V}$
Power consumption $U_P = U_{PNDC}$ @ U_C	P_C	W		1.2		@ $U_C = +24 \text{ V}$
Inrush current						NA (EN 50155)
Interruptions on power supply voltage class						NA (EN 50155)
Supply change-over class						NA (EN 50155)
Rise time of U_C (10 % ... 90 %)	t_{rise}	ms			100	
Total error	ε_{tot}	%	-1		1	
Total error	ε_{tot}	%	-0.5		0.5	@ 25 °C 100 % tested in production
Electrical offset voltage referred to primary	U_{OE}	V	-4.2		4.2	@ 25 °C 100 % tested in production
Temperature variation of U_{OE} referred to primary	U_{OET}	V	-18		18	
			-15		15	@ -25 °C ... 70 °C
Sensitivity	S	mV/V		1.66		@ 25 °C
Sensitivity error	ε_S	%	-0.3		0.3	@ 25 °C
Temperature variation of sensitivity error	ε_{ST}	%	-0.5		0.5	referred to 25 °C
Linearity error	ε_L	% of U_{PM}	-0.5		0.5	@ 25 °C 0 ... 6000 V range
RMS noise current 100 Hz ... 100 kHz referred to secondary	U_{no}	mV		2.4		@ 25 °C
Delay time @ 10 % of the final output value U_{PN} step	t_{D10}	μs		30		
Delay time @ 90 % of the final output value U_{PN} step	t_{D90}	μs		50	60	0 to 4000 V step, 6 kV/ μs
Frequency bandwidth	BW	kHz		14		-3 dB
				8		-1 dB
Start-up time	t_{start}	ms		190	250	
Resistance of primary	R_P	M Ω		25.1		
Total primary power loss @ U_{PN}	P_P	W		0.64		

Definition of typical, minimum and maximum values

Minimum and maximum values for specified limiting and safety conditions have to be understood as such as well as values shown in “typical” graphs.

On the other hand, measured values are part of a statistical distribution that can be specified by an interval with upper and lower limits and a probability for measured values to lie within this interval.

Unless otherwise stated (e.g. “100 % tested”), the LEM definition for such intervals designated with “min” and “max” is that the probability for values of samples to lie in this interval is 99.73 %.

For a normal (Gaussian) distribution, this corresponds to an interval between -3 sigma and $+3$ sigma. If “typical” values are not obviously mean or average values, those values are defined to delimit intervals with a probability of 68.27 %, corresponding to an interval between $-\text{sigma}$ and $+\text{sigma}$ for a normal distribution.

Typical, maximal and minimal values are determined during the initial characterization of the product.

Typical performance characteristics

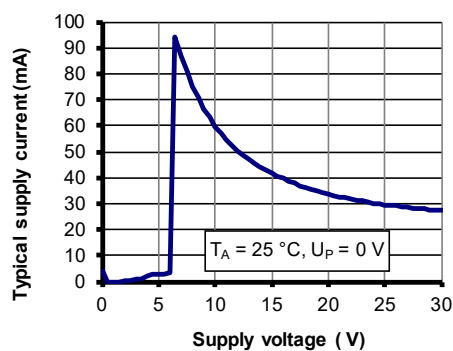


Figure 2: Supply current function of supply voltage

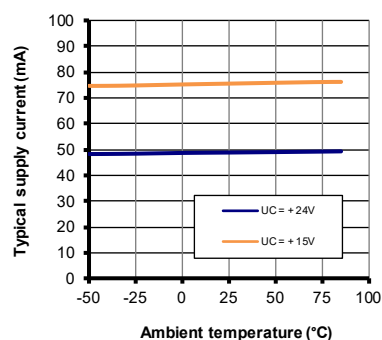


Figure 3: Supply current function of temperature

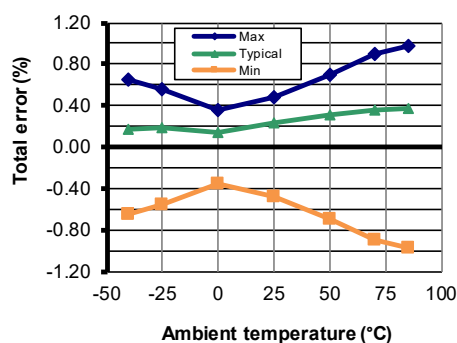


Figure 4: Total error in temperature

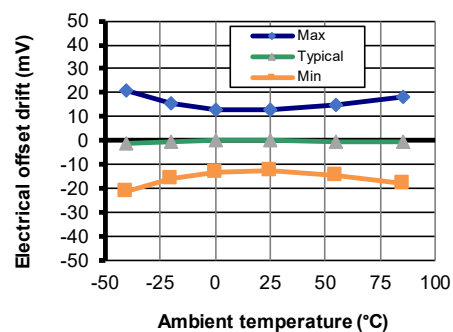


Figure 5: Electrical offset thermal drift

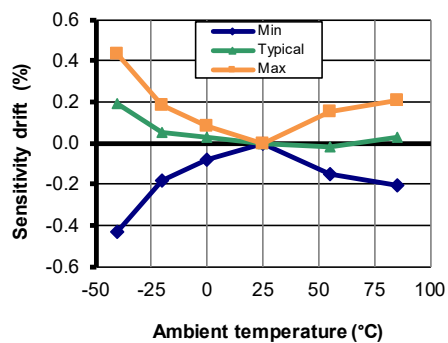


Figure 6: Sensitivity thermal drift

Typical performance characteristics

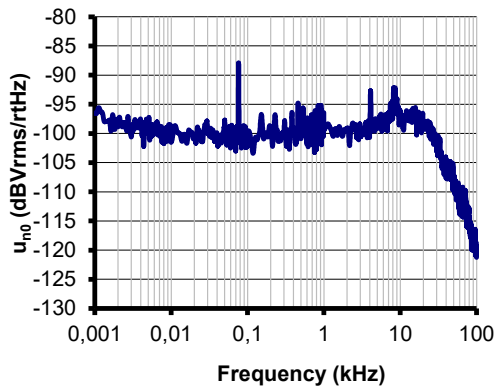


Figure 7: Typical output noise voltage spectral density u_{no} referred to secondary with $R_M = 2 \text{ k}\Omega$

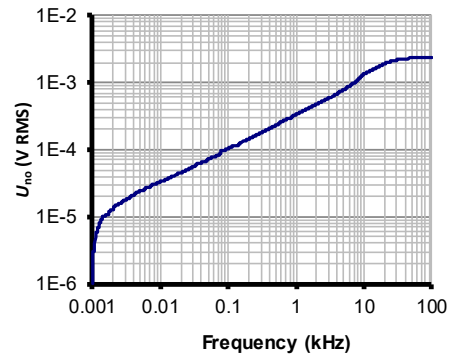


Figure 8: Typical total output RMS noise voltage U_{no} referred to secondary with $R_M = 2 \text{ k}\Omega$

Figure 7 (output noise voltage spectral density) shows that there are no significant discrete frequencies in the output. Figure 8 confirms the absence of steps in the total output RMS noise voltage that would indicate discrete frequencies. To calculate the total output RMS noise in a frequency band f_1 to f_2 , the formula is:
with $U_{no}(f)$ read from figure 8 (typical, RMS value).

$$U_{no}(f_1 \text{ to } f_2) = \sqrt{U_{no}(f_2)^2 - U_{no}(f_1)^2}$$

Example:

What is the total output RMS noise from 10 to 1 kHz?

Figure 8 gives $U_{no}(10 \text{ Hz}) = 33 \text{ }\mu\text{V}$ and $U_{no}(1 \text{ kHz}) = 336 \text{ }\mu\text{V}$.

$$\sqrt{(336 \times 10^{-6})^2 - (33 \times 10^{-6})^2} = 334 \text{ }\mu\text{V}$$

Therefore, the total output RMS noise voltage is 334 μV .

Typical performance characteristics

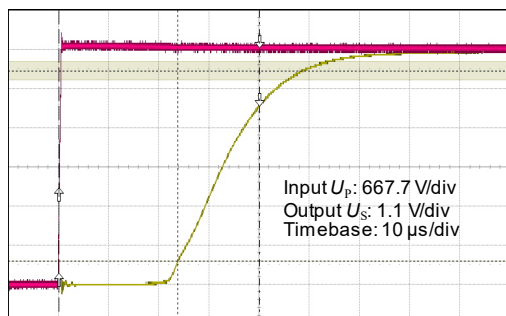


Figure 9: Typical step response (0 to U_{PN})

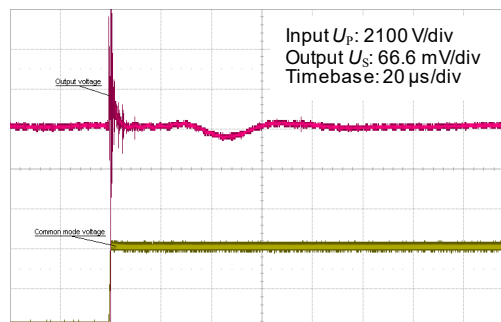


Figure 10: Detail of typical common mode perturbation (4200 V step with 6 kV/ μ s, $R_M = 2$ k Ω)

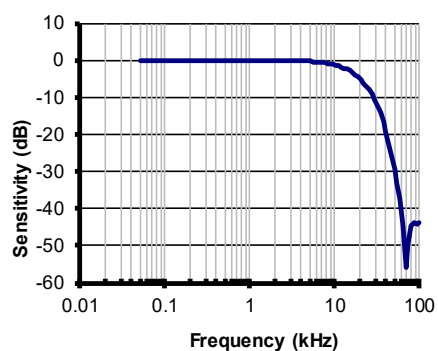


Figure 11: Sensitivity function of frequency

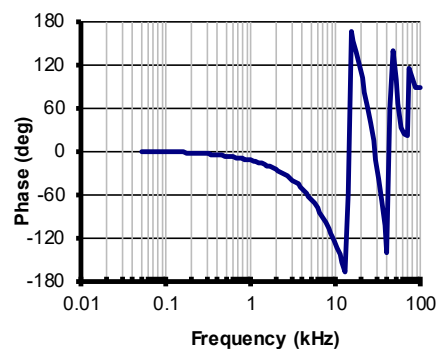


Figure 12: Phase shift function of frequency

Terms and definitions

Simplified transducer model

The static model of the transducer with current output at temperature T_A is:

$$U_S = S \cdot U_P \cdot (1 + \varepsilon)$$

In which (referred to primary):

$$\varepsilon \cdot U_P = U_{OE} + U_{OT} + \varepsilon_S \cdot U_P + \varepsilon_{ST} \cdot U_P + \varepsilon_L(U_{Pmax}) \cdot U_{Pmax}$$

U_P	: primary voltage (V)
U_{Pmax}	: maximum primary voltage applied to the transducer (V)
U_S	: secondary voltage (V)
S	: sensitivity of the transducer
TCS	: temperature coefficient of S
T_A	: ambient operating temperature (°C)
U_{OE}	: electrical offset voltage (V)
U_{OT}	: temperature variation of U_{OE} (V)
ε_S	: sensitivity error at 25 °C
ε_{ST}	: thermal drift of S
$\varepsilon_L(U_{Pmax})$: linearity error for U_{Pmax}

This model is valid for primary voltage U_P between $-U_{Pmax}$ and $+U_{Pmax}$ only.

This is the absolute maximum error. As all errors are independent, a more realistic way to calculate the error would be to use the following formula:

$$\varepsilon = \sqrt{\sum_{i=1}^N \varepsilon_i^2}$$

Total error referred to primary

The total error ε_{tot} is the error at $\pm U_{PN}$, relative to the rated value U_{PN} .

It includes all errors mentioned above

- the electrical offset U_{OE}
- the sensitivity error ε_S
- the linearity error ε_L (to U_{PN}).

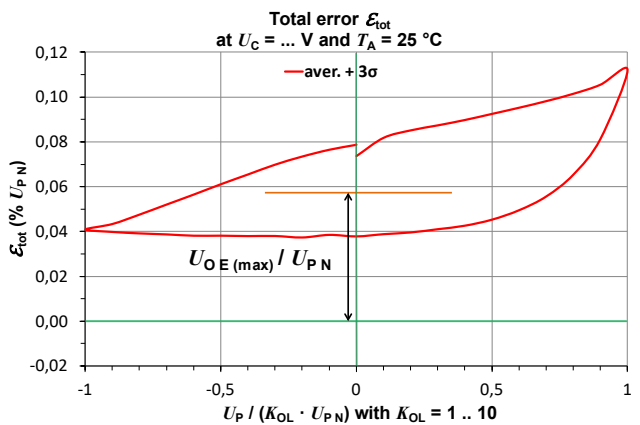
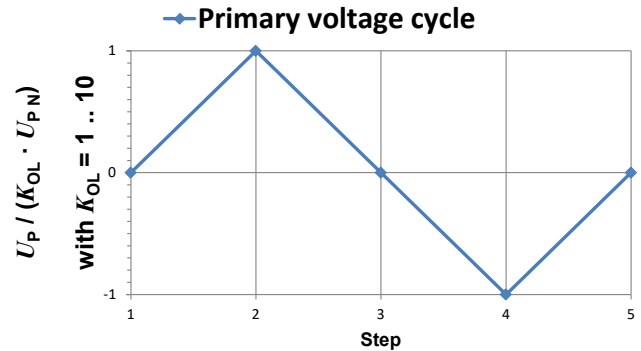


Figure 13: Total error ε_{tot}

Electrical offset referred to primary



K_{OL} : Overload factor

Figure 14: voltage cycle used to measure the electrical offset (transducer supplied)

Using the voltage cycle shown in previous figure, the electrical offset voltage U_{OE} is the residual output referred to primary when the input voltage is zero.

$$U_{OE} = \frac{U_{P(3)} + U_{P(5)}}{2}$$

The temperature variation U_{OT} of the electrical offset voltage U_{OE} is the variation of the electrical offset from 25 °C to the considered temperature.

$$U_{OT}(T) = U_{OE}(T) - U_{OE}(25^\circ\text{C})$$

Sensitivity and linearity

To measure sensitivity and linearity, the primary voltage (DC) is cycled from 0 to U_P , then to $-U_P$ and back to 0 (equally spaced $U_P/10$ steps). The sensitivity S is defined as the slope of the linear regression line for a cycle between $\pm U_{PN}$.

The linearity error ε_L is the maximum positive or negative difference between the measured points and the linear regression line, expressed in % of U_{PN} .

Delay times

The delay time t_{D10} @ 10 % and the delay time t_{D90} @ 90 % with respect to the primary are shown in the next figure.

Both slightly depend on the primary current di/dt .

They are measured at nominal current.

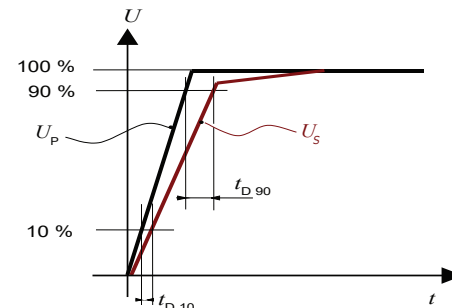
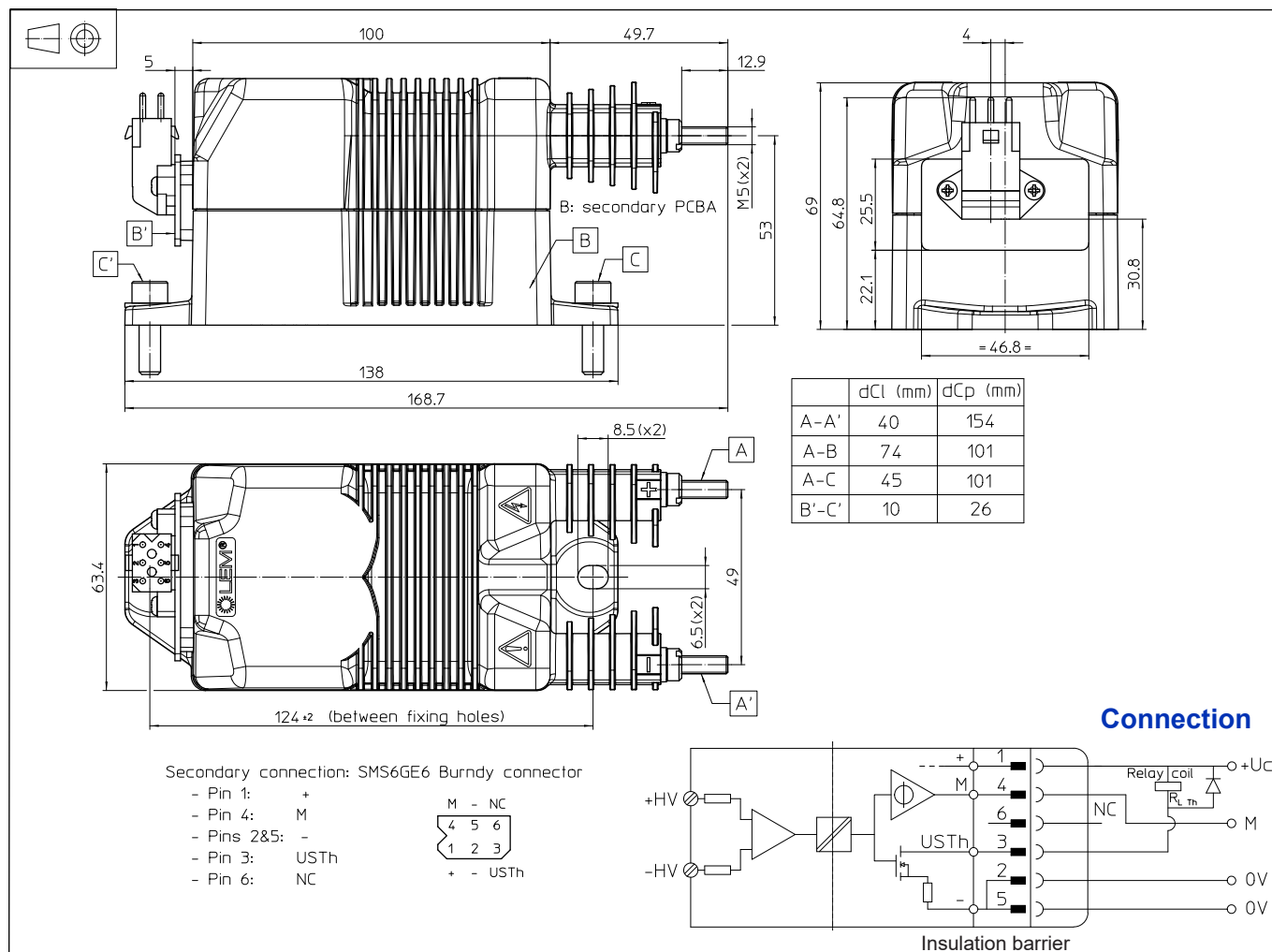


Figure 15: Delay time t_{D10} @ 10 % and delay time t_{D90} @ 90 %.

Dimensions (in mm)



Mechanical characteristics

- General tolerance ± 1 mm
- Transducer fastening
 - 2 holes $\varnothing 6.5$ mm
 - 2 M6 steel screws
- Recommended fastening torque $5 \text{ N}\cdot\text{m} \pm 10 \%$
- Connection of primary
 - 2 M5 threaded studs
- Recommended fastening torque $2.2 \text{ N}\cdot\text{m} \pm 10 \%$
- Connection of secondary
 - SMS6GE6 Burndy connector.

Remarks

- The transducer is directly connected to the primary voltage.
- The primary cables have to be routed together all the way.
- The secondary cables also have to be routed together all the way.
- Installation of the transducer is to be done without primary or secondary voltage present
- Installation of the transducer must be done unless otherwise specified on the datasheet, according to LEM Transducer Generic Mounting Rules. Please refer to LEM document N°ANE120504 available on our Web site: <https://www.lem.com/en/file/3137/download/>

Note: Additional information available on request.

IMPORTANT NOTICE

The information in this document is considered accurate and reliable. However, LEM International SA and any company directly or indirectly controlled by LEM Holding SA ("LEM") do not provide any guarantee or warranty, expressed or implied, regarding the accuracy or completeness of this information and are not liable for any consequences resulting from its use. LEM shall not be responsible for any indirect, incidental, punitive, special, or consequential damages (including, but not limited to, lost profits, lost savings, business interruption, costs related to the removal or replacement of products, or rework charges) regardless of whether such damages arise from tort (including negligence), warranty, breach of contract, or any other legal theory.

LEM reserves the right to update the information in this document, including specifications and product descriptions, at any time without prior notice. Information in this document replaces any previous versions of this document. No license to any intellectual property is granted by LEM through this document, either explicitly or implicitly. Any Information and product described herein is subject to export control regulations.

LEM products may possess either unidentified or documented vulnerabilities. It is the sole responsibility of the purchaser to design and operate their applications and products in a manner that mitigates the impact of these vulnerabilities. LEM disclaims any liability for such vulnerabilities. Customers must select products with security features that best comply with applicable rules, regulations, and standards for their intended use. The purchaser is responsible for making final design decisions regarding its products and for ensuring compliance with all legal, regulatory, and security-related requirements, irrespective of any information or support provided by LEM.

LEM products are not intended, authorized, or warranted for use in life support, life-critical, or safety-critical systems or equipment, nor in applications where failure or malfunction of an LEM product could result in personal injury, death, or significant property or environmental damage. LEM and its suppliers do not assume liability for the inclusion and/or use of LEM products in such equipment or applications; thus, this inclusion and/or use is at the purchaser's own and sole risk. Unless explicitly stated that a specific LEM product is automotive qualified, it should not be used in automotive applications. LEM does not accept liability for the inclusion and/or use of non-automotive qualified products in automotive equipment or applications.

Applications that are described herein are for illustrative purposes only. LEM makes no representation or warranty that LEM products will be suitable for a particular purpose, a specified use or application. The purchaser is solely responsible for the design and operation of its applications and devices using LEM products, and LEM accepts no liability for any assistance with any application or purchaser product design. It is purchaser's sole responsibility to determine whether the LEM product is suitable and fit for the purchaser's applications and products planned, as well as for the planned application and use of purchaser's third-party customer(s).

Stressing and using LEM products at or above limiting values will cause permanent damage to the LEM product and potentially to any device embedding or operating with LEM product. Limiting values are stress ratings only and operation of the LEM product at or above conditions and limits given in this document is not warranted. Continuous or repeated exposure to limiting values will permanently and irreversibly affect the quality and reliability of the LEM product.

LEM products are sold subject to the general terms and conditions of commercial sale, as published at www.lem.com unless otherwise agreed in a specific written agreement. LEM hereby expressly rejects the purchaser's general terms and conditions for purchasing LEM products by purchaser. Any terms and conditions contained in any document issued by the purchaser either before or after issuance of any document by LEM containing or referring to the general terms and conditions of sale are explicitly rejected and disregarded by LEM, and the document issued by the purchaser is wholly inapplicable to any sale or licensing made by LEM and is not binding in any way on LEM.

© 2025 LEM INTERNATIONAL SA – All rights reserved