

# AUTOMOTIVE CURRENT TRANSDUCER OPEN LOOP TECHNOLOGY

## HC5FW 400-S



### Introduction

The HC5FW family is for the electronic measurement of DC, AC or pulsed currents in high power and low voltage automotive applications with galvanic separation between the primary circuit (high power) and the secondary circuit (electronic circuit).

The HC5FW family gives you the choice of having different current measuring ranges in the same housing.

### Features

- Open Loop transducer using the Hall effect
- Low voltage application
- Unipolar +5 V DC power supply
- Primary current measuring range up to  $\pm 400$  A
- Maximum RMS primary current limited by the busbar, the magnetic core or the ASIC temperature  $T < +150$  °C
- Operating temperature range:  $-40$  °C  $< T < +125$  °C
- Output voltage: full ratiometric (sensitivity and offset)
- High speed transducer.

### Advantages

- Good accuracy
- Good linearity
- Low thermal offset drift
- Low thermal sensitivity drift.

### Automotive applications

- Electrical Power Steering
- Starter Generators
- Converters.

### Principle of HC5FW Family

The open loop transducers use a Hall effect integrated circuit. The magnetic flux density  $B$ , contributing to the rise of the Hall voltage, is generated by the primary current  $I_p$  to be measured. The current to be measured  $I_p$  is supplied by a current source i.e. battery or generator (Figure 1). Within the linear region of the hysteresis cycle,  $B$  is proportional to:

$$B(I_p) = a \times I_p$$

The Hall voltage is thus expressed by:

$$U_{Hall} = (c_{Hall} / d) \times I_{Hall} \times a \times I_p$$

Except for  $I_p$ , all terms of this equation are constant. Therefore:

$$U_{Hall} = b \times I_p$$

$a$  constant

$b$  constant

$c_{Hall}$  Hall coefficient

$d$  thickness of the Hall plate

$I_{Hall}$  current across Hall plate

The measurement signal  $U_{Hall}$  is amplified to calculate the user output voltage or current.

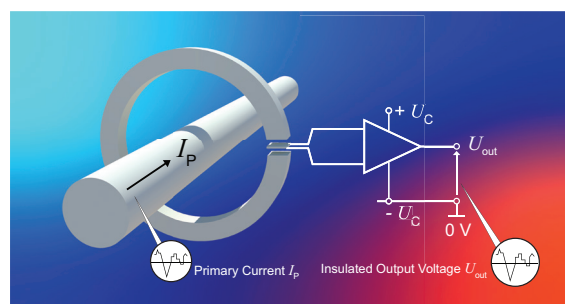
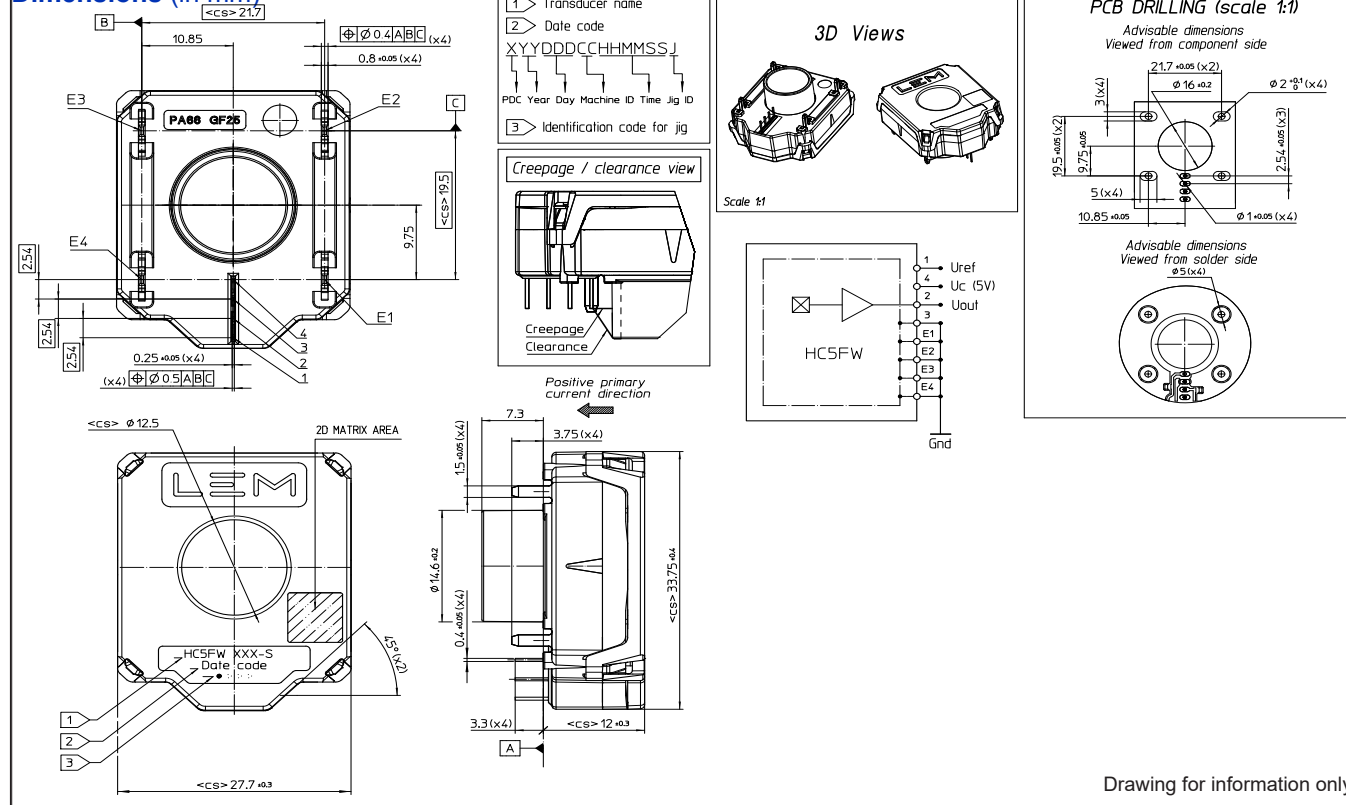


Fig. 1: Principle of the open loop transducer

## Dimensions (in mm)



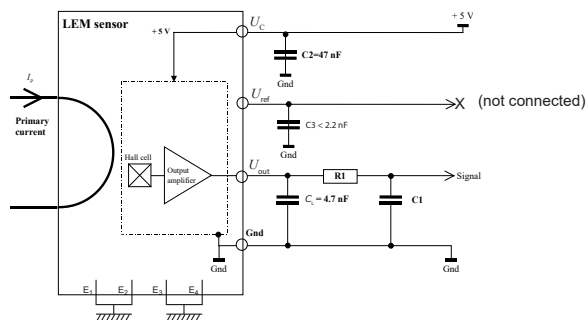
## Mechanical characteristics

- Plastic case PA 66 GF 25
- Magnetic core FeSi alloy
- Plastic cover PA 6T/66 GF30
- Mass 27.5 g
- Electrical terminal coating Tin plated
- IP level IPx00

## Mounting recommendation

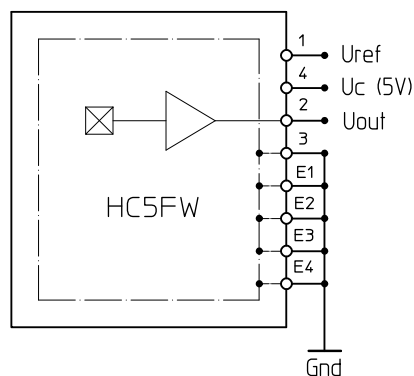
- Connector type None
- Assembly torque max None
- Soldering profile See page 7

## Electronic schematic



## Remarks

- $I_p = \left( \frac{5}{U_c} \times U_{out} - U_o \right) \times \frac{1}{S}$  with  $S$  in (V/A)
- $U_{out} > U_o$  when  $I_p$  flows in the positive direction (see arrow on drawing).
- R1, C1: low pass filter (optional).



## Absolute ratings (not operating)

Parameter	Symbol	Unit	Specification			Conditions
			Min	Typical	Max	
Maximum supply voltage	$U_{C\max}$	V			8	not operating
					6.5	Exceeding this voltage may temporary reconfigure the circuit until the next power-on
Maximum primary current peak	$I_{P\max}$	A			<sup>3)</sup>	
Ambient storage temperature	$T_{A\text{st}}$	°C	-40		125	
Electrostatic discharge voltage	$U_{\text{ESD HBM}}$	kV			2	JESD22-A114-B class 2
Maximum admissible vibration (random)	$\gamma_{\max}$	m·s <sup>-2</sup>	90			10 to 1000 Hz
RMS voltage for AC insulation test, 50 Hz, 1 min	$U_d$	kV			2.5	50 Hz, 1 min, IEC 60664 part1
Insulation resistance	$R_{\text{INS}}$	MΩ	500			
Creepage distance	$d_{\text{cp}}$	mm	7.1			
Clearance	$d_{\text{Cl}}$	mm	5.5			
Comparative tracking index	$CTI$	V	550 on case / 600 on cover			
Maximum reverse current	$I_{\text{rev max}}$	mA	-80		80	

## Operating characteristics in nominal range ( $I_{PN}$ )

Parameter	Symbol	Unit	Specification			Conditions
			Min	Typical	Max	
Electrical Data						
Primary current, measuring range	$I_{PM}$	A	−400		400	
Primary nominal DC or RMS current	$I_{PN}$	A	−400		400	
Supply voltage <sup>1)</sup>	$U_C$	V	4.75	5.00	5.25	
Ambient operating temperature	$T_A$	°C	−40		125	
Output voltage (Analog)	$U_{out}$	V	$U_{out} = (U_C/5) \times (U_O + S \times I_p)$			@ $U_C$
Sensitivity	$S$	mV/A		5		@ $U_C = 5\text{ V}$
Offset voltage	$U_O$	V		2.5		@ $U_C = 5\text{ V}$
Current consumption	$I_C$	mA		19	25	@ $U_C = 5\text{ V}$ , −40 °C < $T$ < 125 °C
Load resistance	$R_L$	KΩ	10			
Load capacitance	$C_L$	nF		4.7	6.8	
Output internal resistance	$R_{out}$	Ω			10	DC to 1 KHz
Performance Data <sup>1)</sup>						
Ratiometricity error	$\varepsilon_r$	%		0.5		
Sensitivity error	$\varepsilon_S$	%		±0.6		@ $T_A = 25\text{ °C}$
Electrical offset voltage	$U_{OE}$	mV		±2.5		@ $T_A = 25\text{ °C}$ , @ $U_C = 5\text{ V}$
Magnetic offset voltage	$U_{OM}$	mV		±2		@ $T_A = 25\text{ °C}$ , @ $U_C = 5\text{ V}$ , after ± $I_p$
Total error @ 0 A	$\varepsilon_{tot}$	mV	−13		13	@ $T_A = 25\text{ °C}$ , @ $U_C = 5\text{ V}$ , Hysteresis included
Average temperature coefficient of $U_{OE}$	$TCU_{OE/AV}$	mV/°C	−0.08		0.08	@ −40 °C < $T$ < 125 °C
Average temperature coefficient of $S$	$TCS_{AV}$	%/°C	−0.03		0.03	@ −40 °C < $T$ < 125 °C
Linearity error	$\varepsilon_L$	% $I_p$	−1		1	Of full range
Delay time to 90 % to the final output value for $I_{PN}$ step	$t_{D90}$	μs		2	6	$di/dt = 100\text{ A}/\mu\text{s}$
Frequency bandwidth <sup>2)</sup>	$BW$	kHz	40			@ −3 dB
Phase shift	$\Delta\varphi$	°	−4		0	@ DC to 1 kHz
Minimum output voltage	$U_{sz}$	V			0.2	@ $U_C = 5\text{ V}$
Maximum output voltage		V	4.8			@ $U_C = 5\text{ V}$
Peak-to-peak noise voltage	$U_{no pp}$	mV			13	DC to 1 MHz

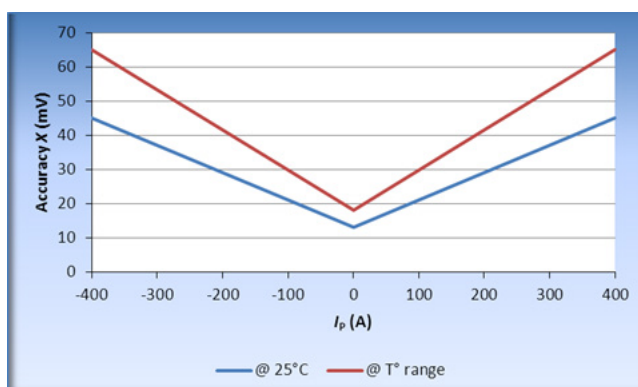
**Notes:** <sup>1)</sup> The output voltage  $U_{\text{out}}$  is fully ratiometric. The offset and sensitivity are dependent on the supply voltage  $U_C$  relative to the following formula:

$$I_P = \left( \frac{5}{U_C} \times U_{\text{out}} - U_O \right) \times \frac{1}{S} \text{ with } S \text{ in (V/A)}$$

<sup>2)</sup> Small signal only to avoid excessive heating of the busbar, core and heating. Measurement with  $C3 = 1\text{ nF}$

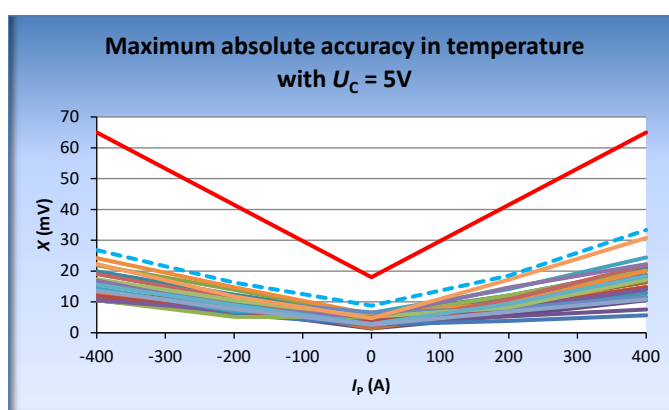
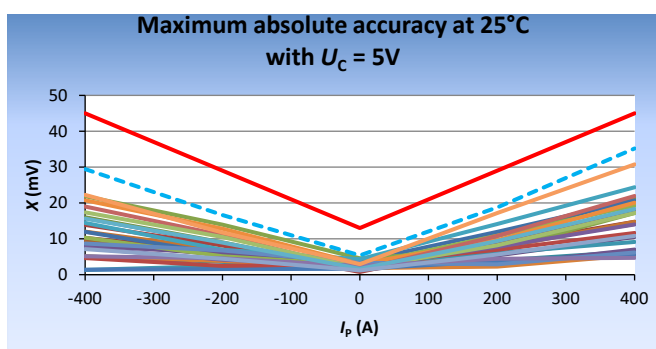
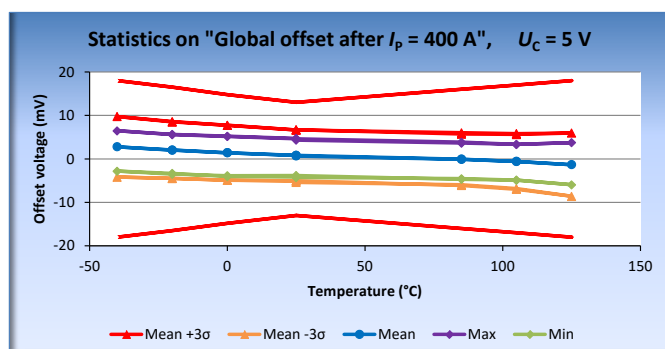
<sup>3)</sup> Busbar temperature must be below 150 °C.

Absolute Error (mV)



Primary current $I_p$ (A)	Error @ 25 °C (mV)	Error @ $T^\circ$ range (mV)
- 400	$\pm 45$	$\pm 65$
0	$\pm 13$	$\pm 18$
400	$\pm 45$	$\pm 65$

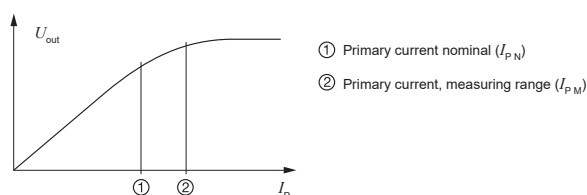
Accuracy error specified at  $\pm 3$  sigma.



Curves in red line represent the tolerance  
Curves in dotted blue line represent average + 3 sigma.

## PERFORMANCES PARAMETERS DEFINITIONS

### Primary current definition:



### Definition of typical, minimum and maximum values:

Minimum and maximum values for specified limiting and safety conditions have to be understood as such as values shown in "typical" graphs. On the other hand, measured values are part of a statistical distribution that can be specified by an interval with upper and lower limits and a probability for measured values to lie within this interval. Unless otherwise stated (e.g. "100 % tested"), the LEM definition for such intervals designated with "min" and "max" is that the probability for values of samples to lie in this interval is 99.73 %. For a normal (Gaussian) distribution, this corresponds to an interval between  $-3$  sigma and  $+3$  sigma. If "typical" values are not obviously mean or average values, those values are defined to delimit intervals with a probability of 68.27 %, corresponding to an interval between  $-\text{sigma}$  and  $+\text{sigma}$  for a normal distribution. Typical, minimum and maximum values are determined during the initial characterization of a product.

### Output noise voltage:

The output voltage noise is the result of the noise floor of the Hall elements and the linear amplifier.

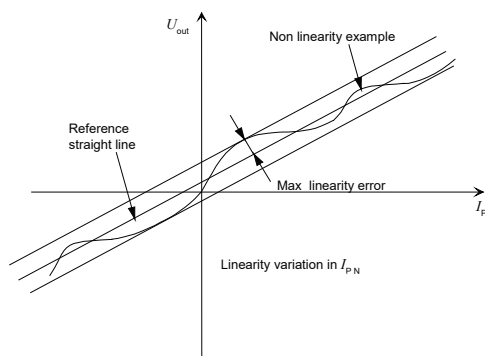
### Magnetic offset:

The magnetic offset is the consequence of an over-current on the primary side. It's defined after an excursion of  $I_{pN}$ .

### Linearity:

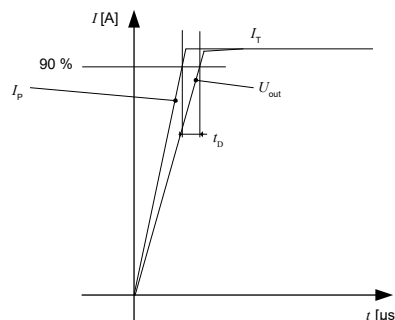
The maximum positive or negative discrepancy with a reference straight line  $V_{out} = f(I_p)$ .

Unit: linearity (%) expressed with full scale of  $I_{pN}$ .



### Delay time $t_{D90}$ :

The time between the primary current signal ( $I_{pN}$ ) and the output signal reach at 90 % of its final value.



### Sensitivity:

The transducer's sensitivity  $S$  is the slope of the straight line

$U_{out} = f(I_p)$ , it must establish the relation:

$$U_{out}(I_p) = U_C/5 (S \times I_p + U_O).$$

### Offset with temperature:

The error of the offset in the operating temperature is the variation of the offset in the temperature considered with the initial offset at 25 °C.

The offset variation  $I_{OT}$  is a maximum variation the offset in the temperature range:

$$I_{OT} = I_{OE \max} - I_{OE \min}$$

The offset drift  $TCI_{OEAV}$  is the  $I_{OT}$  value divided by the temperature range.

### Sensitivity with temperature:

The error of the sensitivity in the operating temperature is the relative variation of sensitivity with the temperature considered with the initial offset at 25 °C.

The average temperature coefficient of sensitivity  $TCS_{AV}$ ,  $S_T$  is the maximum temperature variation of  $S$  (in ppm or %) of the sensitivity in the temperature range:

$$S_T = (\text{Sensitivity max} - \text{Sensitivity min}) / \text{Sensitivity at } 25^\circ\text{C}.$$

The average temperature coefficient of sensitivity  $TCS_{AV}$  is the

$S_T$  value divided by the temperature range.

Deeper and detailed info available is in our LEM technical sales offices ([www.lem.com](http://www.lem.com)).

### Offset voltage @ $I_p = 0$ A:

The offset voltage is the output voltage when the primary current is zero. The ideal value of  $U_O$  is  $U_C/2$ . So, the difference of  $U_O - U_C/2$  is called the total offset voltage error. This offset error can be attributed to the electrical offset (due to the resolution of the ASIC quiescent voltage trimming), the magnetic offset, the thermal drift and the thermal hysteresis. Deeper and detailed info available is in our LEM technical sales offices ([www.lem.com](http://www.lem.com)).

**Environmental test specifications:**

Refer to LEM GROUP test plan laboratory CO.11.11.515.0 with "Tracking\_Test Plan\_Auto" sheet.

Name	Standard
<b>THERMAL FATIGUE</b>	
Ageing 85 °C / 85 % HR / 1000 h Thermal cycle test -40 °C / 125 °C / 1000 h Thermal shocks -40 °C / 125 °C / 1000 h High temperature storage at 125 °C / 1000 h Low temperature storage at -50 °C / 1000 h	IEC 60068-2-78 (2001) IEC 60068-2-14 test Nb (01.2009) IEC 60068-2-14 test Na (01.2009) IEC 60068-2-2 (07.2007) IEC 60068-2-1 (03.2007)
<b>MECHANICAL FATIGUE</b>	
Shocks test (50 m·s <sup>2</sup> x 10 x 3 axis) Vibration test (random 10 - 2000 Hz / 9.723 g)	IEC 60068-2-27 test Ea (2008)
<b>ELECTRICAL TESTS</b>	
Phase delay Output noise di/dt (100 A/μs) dv/dt (2 kVA/μs to 2 kV) Withstand voltage (2500 V rms - 50 Hz / 1 min) Insulation resistance (500 Vdc / 1 min)	-- 98.20.00.575.0 98.20.00.545.0 98.20.00.545.0 ISO 16750-2 (2012)
<b>EMC TESTS</b>	
Radiated Emissions: Absorber Lined Shielded Enclosure (ALSE) Radiated Immunity: Bulk Current Injection (BCI) Radiated Immunity: Anechoic chamber Resistance to Electrostatic Discharge Voltage	IEC CISPR25 ISO 11452-1 & -4 ISO 11452-1 & -2 ISO 10605 (2001)

### Soldering recommendations:

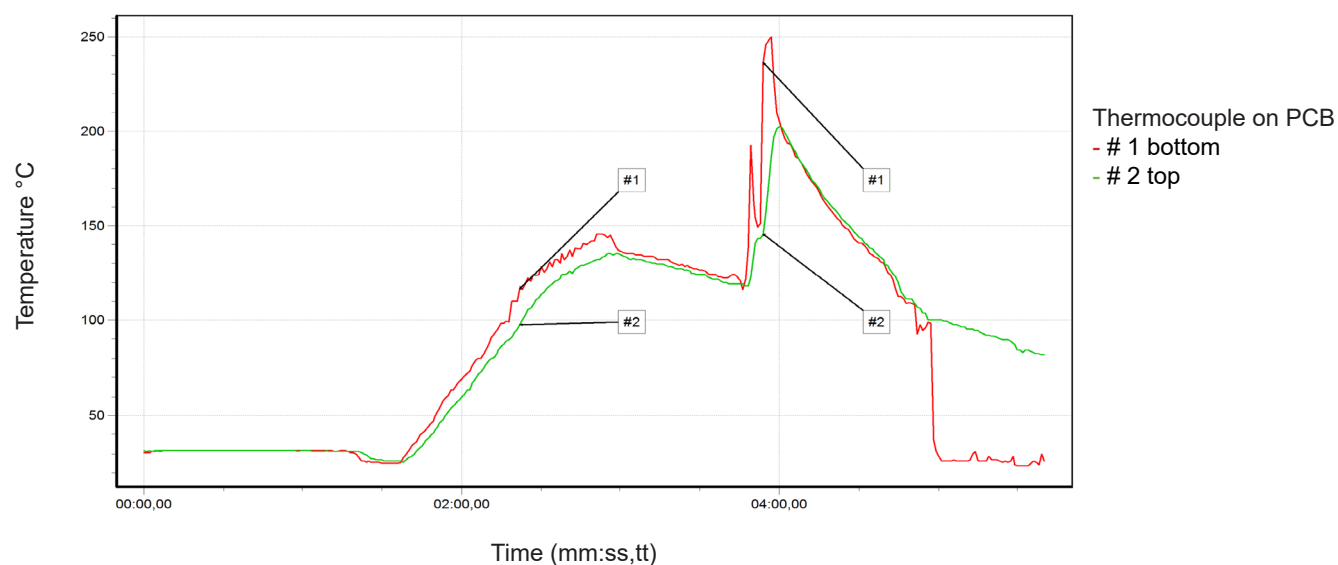
#### 1 - Iron Soldering plated-through holes device

- Mass pin (E1 to E4 see on drawing page 2): 200 W / 370 °C Iron temperature / 7 mm flat W200 Weller
- ASIC terminals (1,2,3,4 see on drawing page 2): 80 W / 410 °C Iron temperature / 0.8 mm diameter STTC125 - Metcal

#### 2 - Wave soldering plated-through holes device

LEM recommends to use the following equipment/parameters for the soldering of the HC5FW family in order to be compliant with the IPC A-610 (more than 75 % land coverage):

- Machine VITRONICS SOLTEC 6622 in combi wave mode
- Flux SLS 65
- Sn96 lead free solder (SAC 305)
- Temperature profile as below
- PCB 2143-00 - thickness: 1.6 mm - mass pin E1 to E4: hole Ø 2 - Asic pin: hole Ø 1.



#### 3 - SMD soldering by pin in paste STH (SMD through hole)

- Must be validated by user.

## IMPORTANT NOTICE

The information in this document is considered accurate and reliable. However, LEM International SA and any company directly or indirectly controlled by LEM Holding SA ("LEM") do not provide any guarantee or warranty, expressed or implied, regarding the accuracy or completeness of this information and are not liable for any consequences resulting from its use. LEM shall not be responsible for any indirect, incidental, punitive, special, or consequential damages (including, but not limited to, lost profits, lost savings, business interruption, costs related to the removal or replacement of products, or rework charges) regardless of whether such damages arise from tort (including negligence), warranty, breach of contract, or any other legal theory.

LEM reserves the right to update the information in this document, including specifications and product descriptions, at any time without prior notice. Information in this document replaces any previous versions of this document. No license to any intellectual property is granted by LEM through this document, either explicitly or implicitly. Any Information and product described herein is subject to export control regulations.

LEM products may possess either unidentified or documented vulnerabilities. It is the sole responsibility of the purchaser to design and operate their applications and products in a manner that mitigates the impact of these vulnerabilities. LEM disclaims any liability for such vulnerabilities. Customers must select products with security features that best comply with applicable rules, regulations, and standards for their intended use. The purchaser is responsible for making final design decisions regarding its products and for ensuring compliance with all legal, regulatory, and security-related requirements, irrespective of any information or support provided by LEM.

LEM products are not intended, authorized, or warranted for use in life support, life-critical, or safety-critical systems or equipment, nor in applications where failure or malfunction of an LEM product could result in personal injury, death, or significant property or environmental damage. LEM and its suppliers do not assume liability for the inclusion and/or use of LEM products in such equipment or applications; thus, this inclusion and/or use is at the purchaser's own and sole risk. Unless explicitly stated that a specific LEM product is automotive qualified, it should not be used in automotive applications. LEM does not accept liability for the inclusion and/or use of non-automotive qualified products in automotive equipment or applications.

Applications that are described herein are for illustrative purposes only. LEM makes no representation or warranty that LEM products will be suitable for a particular purpose, a specified use or application. The purchaser is solely responsible for the design and operation of its applications and devices using LEM products, and LEM accepts no liability for any assistance with any application or purchaser product design. It is purchaser's sole responsibility to determine whether the LEM product is suitable and fit for the purchaser's applications and products planned, as well as for the planned application and use of purchaser's third-party customer(s).

Stressing and using LEM products at or above limiting values will cause permanent damage to the LEM product and potentially to any device embedding or operating with LEM product. Limiting values are stress ratings only and operation of the LEM product at or above conditions and limits given in this document is not warranted. Continuous or repeated exposure to limiting values will permanently and irreversibly affect the quality and reliability of the LEM product.

LEM products are sold subject to the general terms and conditions of commercial sale, as published at [www.lem.com](http://www.lem.com) unless otherwise agreed in a specific written agreement. LEM hereby expressly rejects the purchaser's general terms and conditions for purchasing LEM products by purchaser. Any terms and conditions contained in any document issued by the purchaser either before or after issuance of any document by LEM containing or referring to the general terms and conditions of sale are explicitly rejected and disregarded by LEM, and the document issued by the purchaser is wholly inapplicable to any sale or licensing made by LEM and is not binding in any way on LEM.

© 2025 LEM INTERNATIONAL SA – All rights reserved