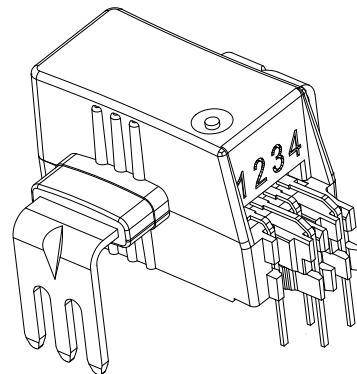


# Current Transducer HLSR 10-P/SP6

$$I_{PN} = 10 \text{ A}$$

For the electronic measurement of current: DC, AC, pulsed..., with galvanic separation between the primary and the secondary circuit.



## Features

- Open loop multi-range current transducer
- Voltage output
- Single supply +5 V
- Galvanic separation between primary and secondary
- Low power consumption
- Compact design for SMT PCB mounting
- Factory calibrated
- High bandwidth, very low loss magnetic core.

## Special feature

- Internal  $U_{ref}$  set to 0.5 V.

## Advantages

- Extremely low profile:  $h = 12 \text{ mm}$
- Low foot-print
- Low offset drift
- Over-drivable  $U_{ref}$ .

## Applications

- AC variable speed and servo motor drives
- Static converters for DC motor drives
- Battery supplied applications
- Uninterruptible Power Supplies (UPS)
- Switched Mode Power Supplies (SMPS)
- Power supplies for welding applications
- Combiner box
- MPPT.

## Standards

- EN 50178: 1997
- IEC 61010-1: 2010
- IEC 61326-1: 2012
- UL 508: 2010.

## Application Domain

- Industrial.

## Absolute maximum ratings

| Parameter  | Symbol    | Unit | Value |
|--|-----------|------|-------|
| Maximum supply voltage (not destructive)                 | $U_C$     | V    | 8     |
| Maximum supply voltage (not entering non standard modes) | $U_C$     | V    | 6.5   |
| Maximum primary conductor temperature                    | $T_B$     | °C   | 120   |
| ESD rating, Human Body Model (HBM)                       | $U_{ESD}$ | kV   | 2     |

Stresses above these ratings may cause permanent damage. Exposure to absolute maximum ratings for extended periods may degrade reliability.

## UL 508: Ratings and assumptions of certification

File # E189713 Volume: 2 Section: 5

### Standards

- CSA C22.2 NO. 14-10 INDUSTRIAL CONTROL EQUIPMENT - Edition 11 - Revision Date 2011/08/01
- UL 508 STANDARD FOR INDUSTRIAL CONTROL EQUIPMENT - Edition 17 - Revision Date 2010/04/15

### Ratings

| Parameter                       | Symbol    | Unit    | Value                               |
|---------------------------------|-----------|---------|-------------------------------------|
| Primary involved potential      |           | V AC/DC | 600                                 |
| Max surrounding air temperature | $T_A$     | °C      | 105                                 |
| Primary current                 | $I_P$     | A       | According to series primary current |
| Secondary supply voltage        | $U_C$     | V DC    | 5                                   |
| Output voltage                  | $U_{out}$ | V       | 0 to 5                              |

### Conditions of acceptability

- 1 - These devices have been evaluated for overvoltage category III and for use in pollution degree 2 environment.
- 2 - A suitable enclosure shall be provided in the end-use application.
- 3 - The terminals have not been evaluated for field wiring.
- 4 - These devices are intended to be mounted on a printed wiring board of end use equipment. The suitability of the connections (including spacings) shall be determined in the end-use application.
- 5 - Primary terminals shall not be straightened since assembly of housing case depends upon bending of the terminals.
- 6 - Any surface of polymeric housing have not been evaluated as insulating barrier.
- 7 - Low voltage control circuit shall be supplied by an isolating source (such as a transformer, optical isolator, limiting impedance or electro-mechanical relay).

### Marking

Only those products bearing the UR Mark should be considered to be Listed or Recognized and covered under UL's Follow-Up Service. Always look for the Mark on the product.

## Insulation coordination

| Parameter   | Symbol   | Unit | Value | Comment  |
|---|----------|------|-------|--|
| RMS voltage for AC insulation test 50/60 Hz/1 min | $U_d$    | kV   | 4.3   |  |
| Impulse withstand voltage 1.2/50 $\mu$ s          | $U_{Ni}$ | kV   | 8     |  |
| Clearance (pri. - sec.)                           | $d_{Cl}$ | mm   | > 8   | Shortest distance through air  |
| Creepage distance (pri. - sec.)                   | $d_{Cp}$ | mm   | > 8   | Shortest path along device body  |
| Clearance (pri. - sec.)                           | -        | mm   | 8     | When mounted on PCB with recommended layout  |
| Case material                                     | -        | -    | V0    | According to UL 94   |
| Comparative tracking index                        | $CTI$    |      | 600   |  |
| Application example                               | -        | V    | 600   | Reinforced insulation, non uniform field according to EN 50178, IEC 61010, CAT III PD2 |
| Application example                               | -        | V    | 1000  | Simple insulation, non uniform field according to EN 50178, IEC 61010, CAT III PD2     |
| Application example                               | -        | V    | 600   | According to UL 508, CAT III PD2   |

## Environmental and mechanical characteristics

| Parameter                     | Symbol      | Unit | Min | Typ | Max | Comment |
|-------------------------------|-------------|------|-----|-----|-----|---------|
| Ambient operating temperature | $T_A$       | °C   | -40 |     | 105 |         |
| Ambient storage temperature   | $T_{A\ st}$ | °C   | -40 |     | 105 |         |
| Mass                          | $m$         | g    |     |     | 5   |         |

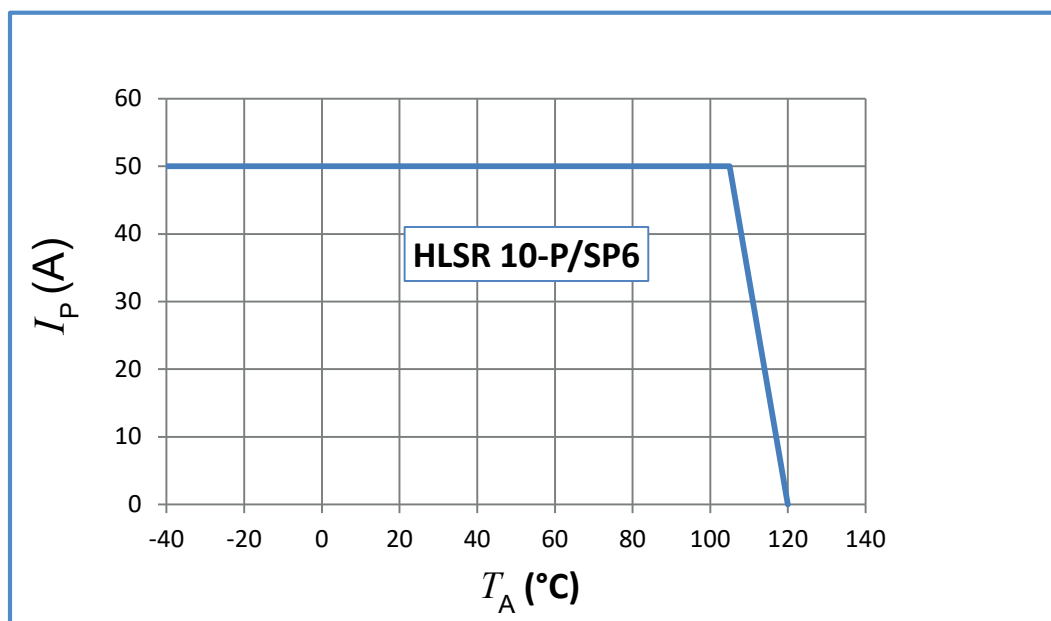
## Electrical data

At  $T_A = 25\text{ °C}$ ,  $U_C = +5\text{ V}$ ,  $R_L = 10\text{ k}\Omega$  unless otherwise noted (see Min, Max, typ. definition paragraph in [page 5](#)).

| Parameter   | Symbol                            | Unit                           | Min    | Typ                  | Max   | Comment   |
|---|-----------------------------------|--------------------------------|--------|----------------------|-------|---|
| Primary nominal RMS current   | $I_{PN}$                          | A                              |        | 10                   |       |   |
| Primary current, measuring range  | $I_{PM}$                          | A                              | -5     |                      | 48.75 | @ $U_C = 4.5\text{ V}$  |
| Number of primary turns   | $N_P$                             | -                              |        | 1                    |       |   |
| Resistance of primary jumper @ $T_A = 25\text{ °C}$                     | $R_P$                             | m $\Omega$                     |        | 0.21                 |       |   |
| Resistance of primary jumper @ $T_A = 105\text{ °C}$                    | $R_P$                             | m $\Omega$                     |        | 0.29                 |       | $T_{\text{jumper}} = 120\text{ °C}$                                 |
| Supply voltage  | $U_C$                             | V                              | 4.5    | 5                    | 5.5   |   |
| Current consumption   | $I_C$                             | mA                             |        | 19                   | 25    |   |
| Reference voltage (output)  | $U_{\text{ref}}$                  | V                              | 0.49   | 0.5                  | 0.51  | Internal reference  |
| Reference voltage (input)   | $U_{\text{ref}}$                  | V                              | 0.5    |                      | 2.65  | External reference  |
| Output voltage range @ $I_{PM}$   | $U_{\text{out}} - U_{\text{ref}}$ | V                              | -0.4   |                      | 3.9   | @ $U_C = 4.5\text{ V}$  |
| $U_{\text{ref}}$ output resistance                                      | $R_{\text{ref}}$                  | $\Omega$                       | 130    | 200                  | 300   | series  |
| $U_{\text{out}}$ output resistance                                      | $R_{\text{out}}$                  | $\Omega$                       |        | 2                    | 5     | series  |
| Load capacitance  | $C_L$                             | nF                             | 0      |                      | 6     |   |
| Electrical offset voltage @ $I_P = 0$                                   | $U_{OE}$                          | mV                             | -5     |                      | 5     | $U_{\text{out}} - U_{\text{ref}}$ @ $U_{\text{ref}} = 0.5\text{ V}$ |
| Electrical offset current referred to primary                           | $I_{OE}$                          | mA                             | -62.5  |                      | 62.5  |   |
| Temperature coefficient of $U_{\text{ref}}$                             | $TCU_{\text{ref}}$                | ppm/K                          | -250   |                      | 250   | -40 °C ... 105 °C   |
| Temperature coefficient of $U_{OE}$                                     | $TCU_{OE}$                        | mV/K                           | -0.075 |                      | 0.075 | -40 °C ... 105 °C   |
| Temperature coefficient of $I_{OE}$                                     | $TCI_{OE}$                        | mA/K                           | -0.94  |                      | 0.94  | -40 °C ... 105 °C   |
| Nominal sensitivity   | $S_N$                             | mV/A                           |        | 80                   |       | 800 mV @ $I_{PN}$   |
| Sensitivity error   | $\varepsilon_S$                   | %                              | -0.5   |                      | 0.5   | Factory adjustment  |
| Temperature coefficient of $S$  | $TCS$                             | ppm/K                          | -200   |                      | 200   | -40 °C ... 105 °C   |
| Linearity error 0 ... $I_{PN}$  | $\varepsilon_L$                   | % of $I_{PN}$                  | -0.5   |                      | 0.5   |   |
| Linearity error 0 ... $I_{PM}$  | $\varepsilon_L$                   | % of $I_{PM}$                  | -0.8   |                      | 0.8   |   |
| Magnetic offset current (@ $10 \times I_{PN}$ ) referred to primary     | $I_{OM}$                          | A                              | -0.25  |                      | 0.25  |   |
| Delay time @ 90 % of the final output value $I_{PN}$ step               | $t_{D10}$                         | $\mu\text{s}$                  |        |                      | 2     | @ 50 A/ $\mu\text{s}$   |
| Delay time @ 90 % of the final output value $I_{PN}$ step               | $t_{D90}$                         | $\mu\text{s}$                  |        |                      | 2.5   | @ 50 A/ $\mu\text{s}$   |
| Frequency bandwidth (-3 dB)   | $BW$                              | kHz                            |        | 400                  |       |   |
| Noise voltage spectral density 100 Hz ... 100 kHz                       | $u_{no}$                          | $\mu\text{V}/\sqrt{\text{Hz}}$ |        |                      | 28    |   |
| RMS noise voltage<br>DC ... 10 kHz<br>DC ... 100 kHz<br>DC ... 1 MHz    | $U_{no}$                          | mVpp                           |        | 17.5<br>46.1<br>65.7 |       |   |
| Sum of sensitivity and linearity @ $I_{PN}$                             | $\varepsilon_{SL}$                | % of $I_{PN}$                  | -1     |                      | 1     |   |
| Sum of sensitivity and linearity<br>@ $I_{PN}$ @ $T_A = +85\text{ °C}$  | $\varepsilon_{SL}$                | % of $I_{PN}$                  | -2.8   |                      | 2.8   | See formula note <sup>1)</sup>                                      |
| Sum of sensitivity and linearity<br>@ $I_{PN}$ @ $T_A = +105\text{ °C}$ | $\varepsilon_{SL}$                | % of $I_{PN}$                  | -3.4   |                      | 3.4   | See formula note <sup>1)</sup>                                      |

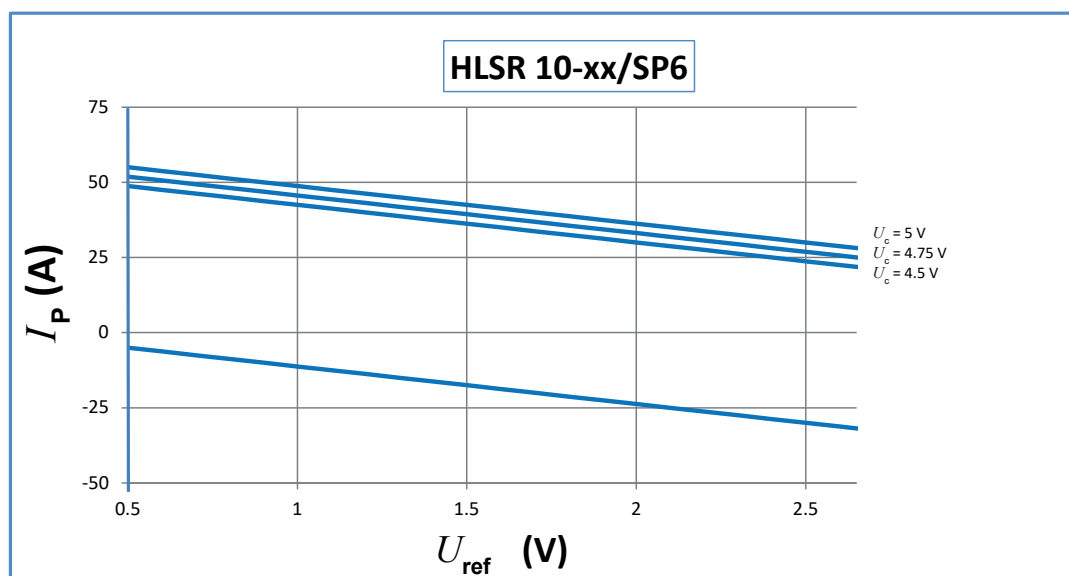
**Note:** <sup>1)</sup>  $\varepsilon_{SL}(T_A) = \varepsilon_{SL25} + \left( TCS + \frac{TCI_{OE}}{I_{PN}} \right) \times |T_A - 25|$

## Maximum continuous DC current



**Important notice:** whatever the usage and/or application, the transducer jumper temperature shall not go above the maximum ratings of 120 °C as stated in page 2 of this datasheet.

## Measuring range versus external reference voltage



## Definition of typical, minimum and maximum values

Minimum and maximum values for specified limiting and safety conditions have to be understood as such as well as values shown in “typical” graphs.

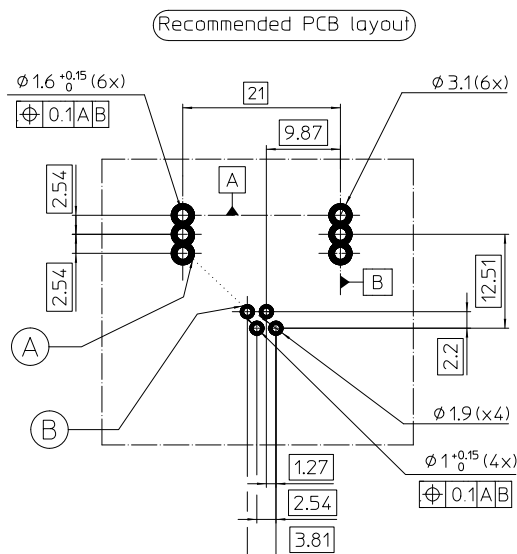
On the other hand, measured values are part of a statistical distribution that can be specified by an interval with upper and lower limits and a probability for measured values to lie within this interval.

Unless otherwise stated (e.g. “100 % tested”), the LEM definition for such intervals designated with “min” and “max” is that the probability for values of samples to lie in this interval is 99.73 %.

For a normal (Gaussian) distribution, this corresponds to an interval between -3 sigma and +3 sigma. If “typical” values are not obviously mean or average values, those values are defined to delimit intervals with a probability of 68.27 %, corresponding to an interval between -sigma and +sigma for a normal distribution.

Typical, minimum and maximum values are determined during the initial characterization of the product.

## PCB footprint



|     | $d_{Cl}$ (mm) | $d_{Cp}$ (mm) |
|-----|---------------|---------------|
| A-B | 9.42          | 9.42          |

## Assembly on PCB

- Recommended PCB hole diameter
  - 1.6 mm for primary pins
  - 1 mm for secondary pins
- Maximum PCB thickness
  - 2.4 mm
- Wave soldering profile
  - maximum 260 °C for 10 s
  - No clean process only.

## Safety

This transducer must be used in limited-energy secondary circuits according to IEC 61010-1.



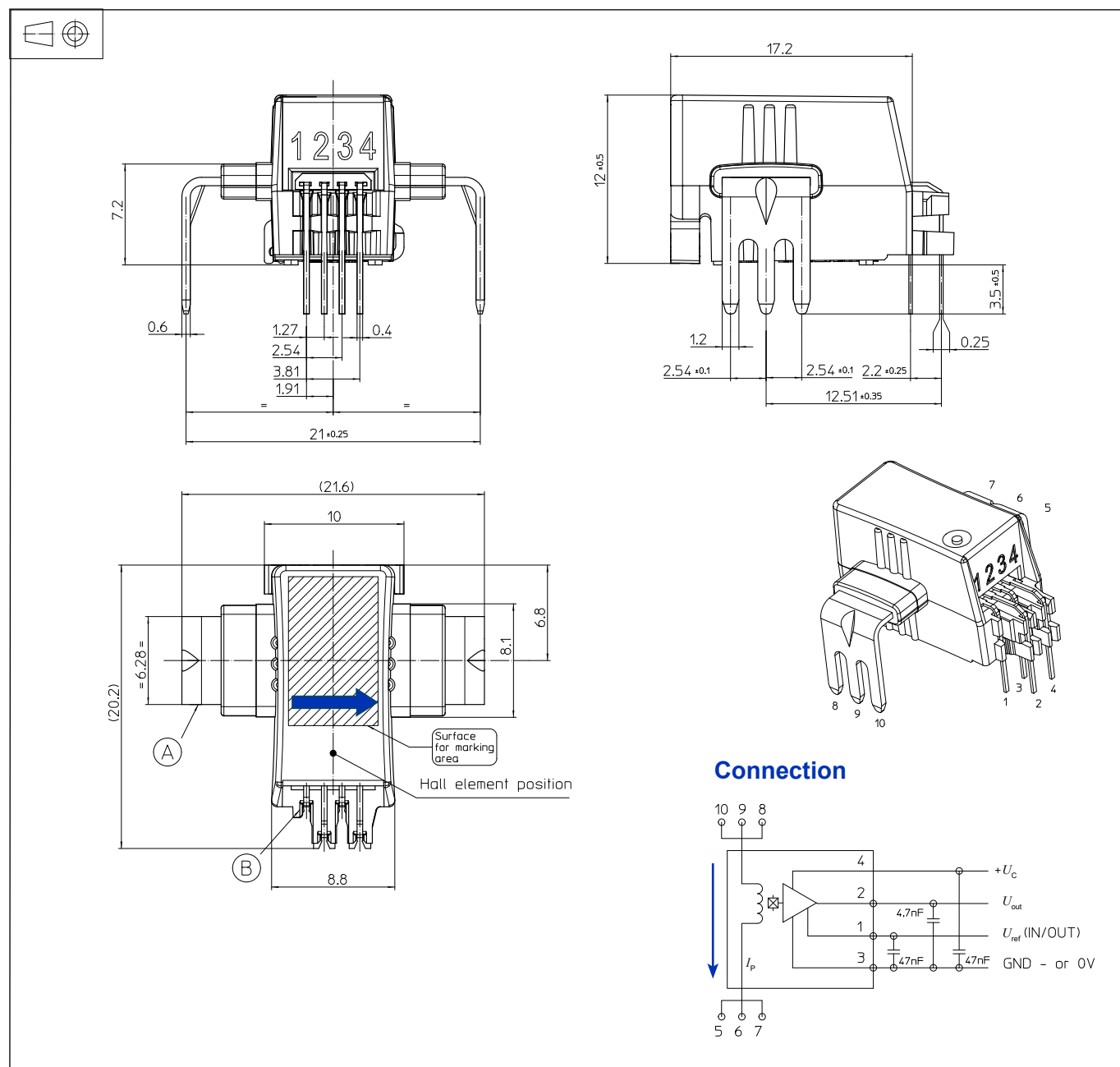
This transducer must be used in electric/electronic equipment with respect to applicable standards and safety requirements in accordance with the manufacturer's operating instructions.



Caution, risk of electrical shock

When operating the transducer, certain parts of the module can carry hazardous voltage (eg. primary busbar, power supply). Ignoring this warning can lead to injury and/or cause serious damage. This transducer is a build-in device, whose conducting parts must be inaccessible after installation. A protective housing or additional shield could be used. Main supply must be able to be disconnected.

## Dimensions (in mm. General linear tolerance $\pm 0.2$ mm)



## Remarks

- $U_{out}$  is positive with respect to  $U_{ref}$  when positive  $I_p$  flows in direction of the arrow shown on the drawing above
- Installation of the transducer must be done unless otherwise specified on the datasheet, according to LEM Transducer Generic Mounting Rules. Please refer to LEM document N°ANE120504 available on our Web site: <https://www.lem.com/en/file/3137/download>

## IMPORTANT NOTICE

The information in this document is considered accurate and reliable. However, LEM International SA and any company directly or indirectly controlled by LEM Holding SA ("LEM") do not provide any guarantee or warranty, expressed or implied, regarding the accuracy or completeness of this information and are not liable for any consequences resulting from its use. LEM shall not be responsible for any indirect, incidental, punitive, special, or consequential damages (including, but not limited to, lost profits, lost savings, business interruption, costs related to the removal or replacement of products, or rework charges) regardless of whether such damages arise from tort (including negligence), warranty, breach of contract, or any other legal theory.

LEM reserves the right to update the information in this document, including specifications and product descriptions, at any time without prior notice. Information in this document replaces any previous versions of this document. No license to any intellectual property is granted by LEM through this document, either explicitly or implicitly. Any Information and product described herein is subject to export control regulations.

LEM products may possess either unidentified or documented vulnerabilities. It is the sole responsibility of the purchaser to design and operate their applications and products in a manner that mitigates the impact of these vulnerabilities. LEM disclaims any liability for such vulnerabilities. Customers must select products with security features that best comply with applicable rules, regulations, and standards for their intended use. The purchaser is responsible for making final design decisions regarding its products and for ensuring compliance with all legal, regulatory, and security-related requirements, irrespective of any information or support provided by LEM.

LEM products are not intended, authorized, or warranted for use in life support, life-critical, or safety-critical systems or equipment, nor in applications where failure or malfunction of an LEM product could result in personal injury, death, or significant property or environmental damage. LEM and its suppliers do not assume liability for the inclusion and/or use of LEM products in such equipment or applications; thus, this inclusion and/or use is at the purchaser's own and sole risk. Unless explicitly stated that a specific LEM product is automotive qualified, it should not be used in automotive applications. LEM does not accept liability for the inclusion and/or use of non-automotive qualified products in automotive equipment or applications.

Applications that are described herein are for illustrative purposes only. LEM makes no representation or warranty that LEM products will be suitable for a particular purpose, a specified use or application. The purchaser is solely responsible for the design and operation of its applications and devices using LEM products, and LEM accepts no liability for any assistance with any application or purchaser product design. It is purchaser's sole responsibility to determine whether the LEM product is suitable and fit for the purchaser's applications and products planned, as well as for the planned application and use of purchaser's third-party customer(s).

Stressing and using LEM products at or above limiting values will cause permanent damage to the LEM product and potentially to any device embedding or operating with LEM product. Limiting values are stress ratings only and operation of the LEM product at or above conditions and limits given in this document is not warranted. Continuous or repeated exposure to limiting values will permanently and irreversibly affect the quality and reliability of the LEM product.

LEM products are sold subject to the general terms and conditions of commercial sale, as published at [www.lem.com](http://www.lem.com) unless otherwise agreed in a specific written agreement. LEM hereby expressly rejects the purchaser's general terms and conditions for purchasing LEM products by purchaser. Any terms and conditions contained in any document issued by the purchaser either before or after issuance of any document by LEM containing or referring to the general terms and conditions of sale are explicitly rejected and disregarded by LEM, and the document issued by the purchaser is wholly inapplicable to any sale or licensing made by LEM and is not binding in any way on LEM.

© 2025 LEM INTERNATIONAL SA – All rights reserved