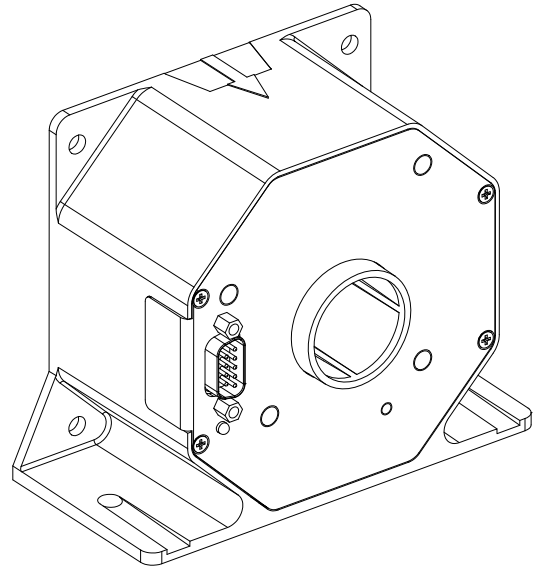


For ultra-high precision measurement of current: DC, AC, pulsed..., with galvanic separation between primary and secondary.



Features

- Closed loop (compensated) current transducer using an extremely accurate zero flux detector
- Electrostatic shield between primary and secondary circuit
- 9-pin D-Sub male secondary connector
- Status signal to indicate the transducer state
- LED indicator confirms normal operation.

Special feature

- Fluxgate excitation frequency adjusted.

Advantages

- Very high accuracy
- Excellent linearity
- Extremely low temperature variation
- Wide frequency bandwidth
- High immunity to external fields
- No insertion losses
- Low noise on output signal
- Low noise feedback to primary conductor.

Applications

- Feed back element in high performance gradient amplifiers for MRI
- Feedback element in high-precision, high-stability power supplies
- Calibration unit
- Energy measurement
- Medical equipment.

Standards

- EN 61326-1: 2013
- EN 61000-6-2: 2005 / AC: 2005
- EN 61000-6-3: 2007 / A1: 2011 / AC: 2012
- EN 61010-1: 2010 / A1:2019 / AC: 2019-04
- EN IEC 61010-2-030: 2021 / A11: 2021.

Application Domains

- Industrial
- Laboratory
- Medical.

Safety



Caution

If the device is used in a way that is not specified by the manufacturer, the protection provided by the device may be compromised. Always inspect the electronics unit and connecting cable before using this product and do not use it if damaged. Mounting assembly shall guarantee the maximum primary conductor temperature, fulfill clearance and creepage distance, minimize electric and magnetic coupling, and unless otherwise specified can be mounted in any orientation.



Caution, risk of electrical shock

This transducer must be used in limited-energy secondary circuits SELV according to IEC 61010-1, in electric/electronic equipment with respect to applicable standards and safety requirements in accordance with the manufacturer's operating specifications.

Use caution during installation and use of this product; certain parts of the module can carry hazardous voltages and high currents (e.g. power supply, primary conductor).

Ignoring this warning can lead to injury and/or cause serious damage.

De-energize all circuits and hazardous live parts before installing the product.

All installations, maintenance, servicing operations and use must be carried out by trained and qualified personnel practicing applicable safety precautions.

This transducer is a build-in device, whose hazardous live parts must be inaccessible after installation.

This transducer must be mounted in a suitable end-enclosure.

Besides make sure to have a distance of minimum 30 mm between the primary terminals of the transducer and other neighboring components.

Main supply must be able to be disconnected.

Always inspect the current transducer for damage before using this product.

Never connect or disconnect the external power supply while the primary circuit is connected to live parts.

Never connect the output to any equipment with a common mode voltage to earth greater than 30 V.

Always wear protective clothing and gloves if hazardous live parts are present in the installation where the measurement is carried out.

Safe and trouble-free operation of this transducer can only be guaranteed if transport, storage and installation are carried out correctly and are carried out with care.

The current transducer shall not be opened or modified.

If not working, the current transducer shall be replaced by an equivalent device.

This transducer is a built-in device, not intended to be cleaned with any product. Nevertheless if the user must implement cleaning or washing process, validation of the cleaning program has to be done by himself.

Do not dispose of this product as unsorted municipal waste. Contact a qualified recycler for disposal.



Caution, hot surface

Power supply cable must support a temperature of 100 °C at least and it must be fixed in a way to not be in contact with the product housing and primary conductor.

Absolute maximum ratings

| Parameter | Symbol | Unit | Value |
|---|------------------|------|-------|
| Maximum supply voltage (working) (10 ... 50 °C) | $\pm U_{C \max}$ | V | 15.75 |
| Maximum primary conductor temperature | $T_{B \max}$ | °C | 50 |

Absolute maximum ratings apply at 25 °C unless otherwise noted.
 Stresses above these ratings may cause permanent damage.
 Exposure to absolute maximum ratings for extended periods may degrade reliability.

Environmental and mechanical characteristics

| Parameter | Symbol | Unit | Min | Typ | Max | Comment |
|-------------------------------|-------------------|------|-----|-----|--------------------|--------------------|
| Ambient operating temperature | T_A | °C | 10 | | 50 | |
| Ambient storage temperature | $T_{A \text{st}}$ | °C | -20 | | 85 | |
| Relative humidity | RH | % | 20 | | 80 | Non-condensing |
| Mass | m | g | | 800 | | |
| Altitude | | m | | | 2000 ¹⁾ | |
| Environmental conditions | | | | | | Indoor |
| Cooling conditions | | | | | | Natural convection |

Note: ¹⁾ Insulation coordination at 2000 m above sea level.

Insulation coordination

| Parameter | Symbol | Unit | ≤ Value | Comment |
|--|----------|------|---------|--|
| RMS voltage for AC insulation test, 50 Hz, 1 min | U_d | kV | 4.6 | Between primary and secondary + shield |
| | | V DC | 200 | Between secondary and shield |
| | | V DC | 500 | Between secondary and status output |
| Impulse withstand voltage 1.2/50 μ s | U_{Ni} | kV | 8.5 | According to IEC 61010-1 |
| Clearance (pri. - sec.) | d_{Cl} | mm | 9 | Shortest distance through air |
| Creepage distance (pri. - sec.) | d_{Cp} | mm | 9 | Shortest path along device body |
| Case material | - | - | V0 | According to UL 94 |
| Comparative tracking index | CTI | | 600 | |
| Application example RMS voltage line-to-neutral | | V | 600 | Reinforced insulation according to IEC 61010-1 CAT II, PD2 |
| Application example RMS voltage line-to-neutral | | V | 600 | Reinforced insulation according to EN 50178 CAT III, PD2 |

If insulated cable is used for the primary circuit, the voltage category could be improved with the following table (for single insulation) (IEC 61010-1 standard):

| Cable insulated (primary) | Category |
|---------------------------|----------------|
| HAR03 | 1750 V CAT III |
| HAR05 | 1850 V CAT III |
| HAR07 | 1950 V CAT III |

Electrical data

 At $T_A = 25\text{ °C}$, $\pm U_C = \pm 15\text{ V}$, unless otherwise noted (see Min, Max, typ, definition paragraph in [page 6](#)).

| Parameter | Symbol | Unit | Min | Typ | Max | Comment |
|---|------------------|---------------|-------------|----------|-------------|--|
| Primary nominal DC current (continuous) | I_{PNDC} | A | -700 | | 700 | |
| Primary nominal AC RMS current (continuous) | I_{PNAC} | A | | | 495 | |
| Primary current, measuring range | I_{PM} | A | -700 | | 700 | |
| Measuring resistance | R_M | Ω | 0 | | 2.5 | $U_C = \pm 15\text{ V} \pm 5\%$, $T_A = 10\text{ °C} \dots 50\text{ °C}$, $I_P = 0 \dots \pm I_{PM}$, See page 7 |
| Secondary current | I_S | mA | -400 | | 400 | |
| Fluxgate excitation frequency | | kHz | 15.5 | | 16 | Adjusted in production |
| Maximum withstand primary peak current ¹⁾ | \hat{I}_{Pmax} | kA | -3.5 | | 3.5 | @ pulse of 100 ms |
| Resistance of secondary winding | R_S | Ω | | 20 | | @ 25 °C |
| Number of secondary turns | N_S | | | 1750 | | |
| DC supply voltage | U_C | V | ± 14.25 | ± 15 | ± 15.75 | |
| DC current consumption | I_C | mA | | | 80 | Add I_S for total current consumption |
| Electrical offset current + self magnetization + effect of earth magnetic field ²⁾ | I_{OE} | ppm | -50 | | 50 | |
| Temperature coefficient of I_{OE} referred to primary ²⁾ | TCI_{OE} | ppm/K | -0.5 | | 0.5 | $T_A = 10\text{ °C} \dots 50\text{ °C}$ |
| Offset stability ²⁾ | | ppm/month | -0.5 | | 0.5 | |
| Sensitivity | S | mA/A | | 0.571 | | |
| Linearity error ²⁾ | ϵ_L | ppm | -3 | | 3 | |
| RMS noise current 0 ... 10 Hz referred to primary ²⁾ | I_{no} | ppm | | | 0.05 | |
| RMS noise current 0 ... 100 Hz referred to primary ²⁾ | | | | | 0.5 | |
| RMS noise current 0 ... 1 kHz referred to primary ²⁾ | | | | | 1 | |
| RMS noise current 0 ... 10 kHz referred to primary ²⁾ | | | | | 3 | |
| RMS noise current 0 ... 50 kHz referred to primary ²⁾ | | | | | 6 | |
| Re-injected RMS noise on primary bus bar | | μV | | | 5 | 0 ... 50 kHz |
| Delay time to 90 % of the final output value for I_{PN} step | t_{D90} | μs | | | 1 | di/dt of 100 A/ μs |
| Frequency bandwidth ($\pm 1\text{ dB}$) | BW | kHz | 0 | 50 | | Small-signal bandwidth, 0.5 % of I_{PM} |
| Frequency bandwidth ($\pm 3\text{ dB}$) | BW | kHz | 0 | 100 | | Small-signal bandwidth, 0.5 % of I_{PM} |

Notes: ¹⁾ Single pulse only, not AC. The transducer may require a few seconds to return to normal operation when autoreset system is running.
²⁾ All ppm figures refer to full-scale which corresponds to a secondary current (I_S) of 400 mA.

Definition of typical, minimum and maximum values

Minimum and maximum values for specified limiting and safety conditions have to be understood as such as well as values shown in “typical” graphs.

On the other hand, measured values are part of a statistical distribution that can be specified by an interval with upper and lower limits and a probability for measured values to lie within this interval.

Unless otherwise stated (e.g. “100 % tested”), the LEM definition for such intervals designated with “min” and “max” is that the probability for values of samples to lie in this interval is 99.73 %.

For a normal (Gaussian) distribution, this corresponds to an interval between -3 sigma and $+3$ sigma. If “typical” values are not obviously mean or average values, those values are defined to delimit intervals with a probability of 68.27 %, corresponding to an interval between $-\text{sigma}$ and $+\text{sigma}$ for a normal distribution.

Typical, maximal and minimal values are determined during the initial characterization of the product.

Overload protection - Electrical specification - Status

The overload occurs when the primary current I_p exceeds a trip level such that the fluxgate detector becomes completely saturated and, consequently, the transducer will switch from normal operation to overload mode.

This trip level is guaranteed to be greater than 110 % of $I_{P\ NDC}$ and its actual value depends on operating conditions such as temperature and measuring resistance.

When this happens, the transducer will automatically begin to sweep in order to lock on the primary current again and the measuring can resume when the primary current returns in the nominal range between $-I_{P\ NDC}$ and $+I_{P\ NDC}$.

In overload mode, the secondary current generated is a low frequency triangle waveform between $-0.4\ A$ and $0.4\ A$.

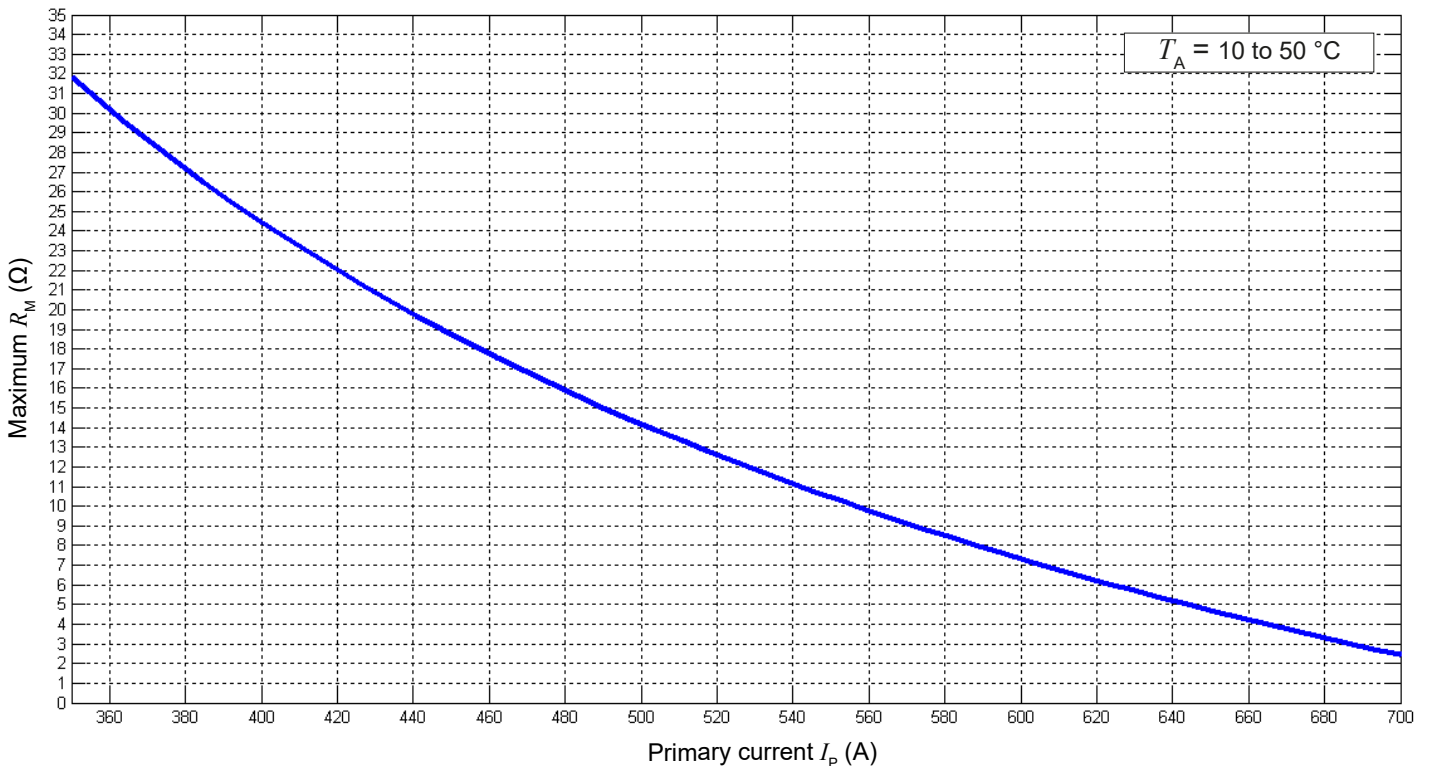
Under these conditions:

- The contact (normal operation status) between pin 3 and 8 (of the D-sub connector) switches off, this contact becomes open.
- The green LED indicator (normal operation status) turns off.

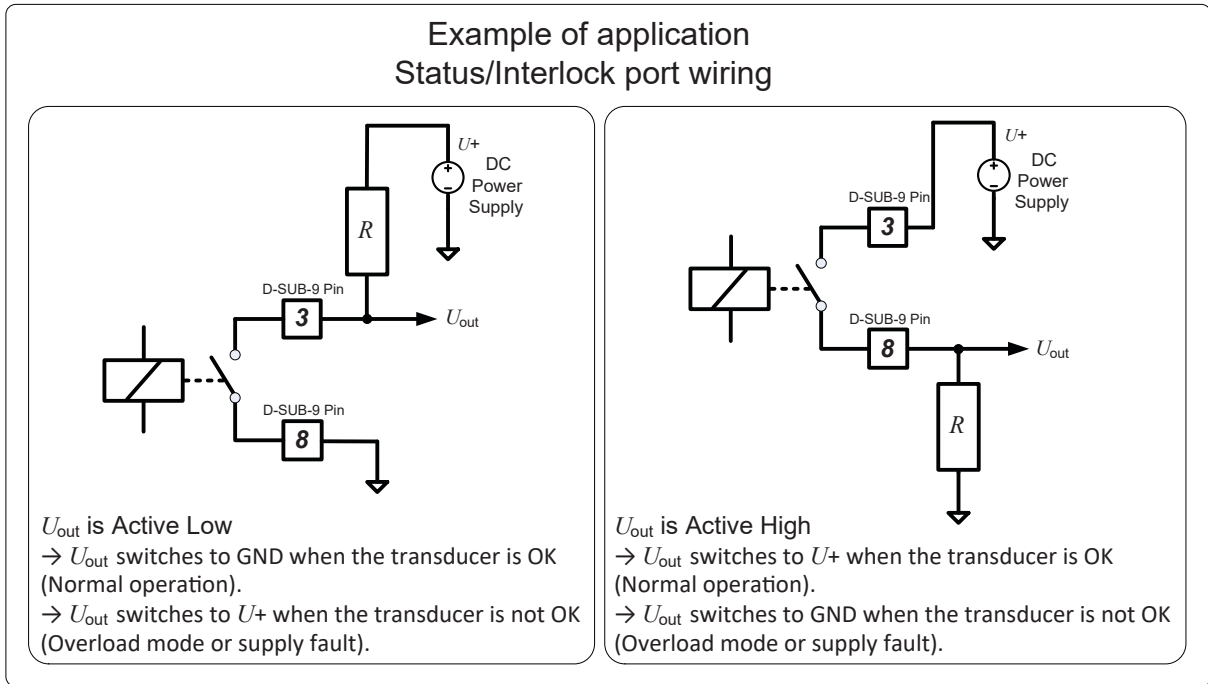
| | |
|--|-------------|
| Max voltage pin 3 and pin 8, off-State | 100 V |
| Max current pin 3 and pin 8, on-State | 1000 mA |
| On-State resistance pin 3 and pin 8: | 50 mΩ (typ) |

TO ENSURE A SAFE RECOVERY FROM SATURATION, THE MAXIMUM BURDEN RESISTOR ALLOWED IS 2.5 Ω.

Maximum measuring resistor versus primary current

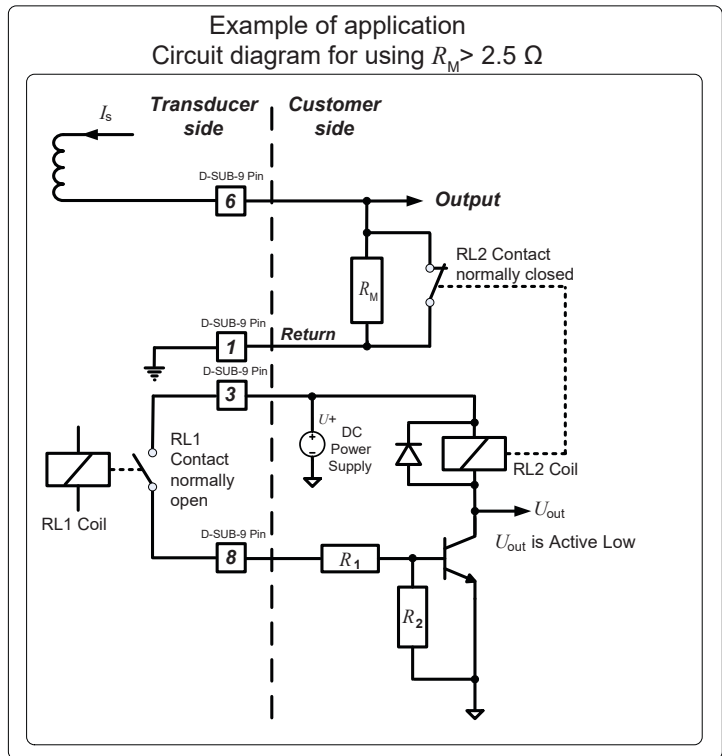


Status/Interlock port wiring



Circuit diagram for using $R_M > 2.5 \Omega$

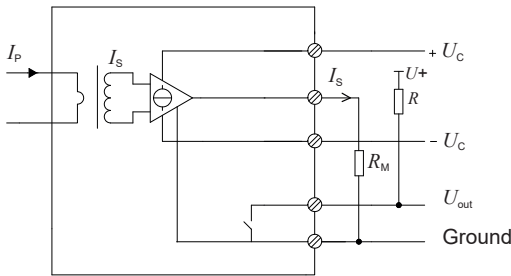
This circuit ensures a safe recovery from saturation when using $R_M > 2.5 \Omega$. It allows the transducer to recover normal operation in case R_M is greater than 2.5Ω and an overload is detected by the transducer.



| Contact RL1 (Pins 3 and 8) | Contact RL2 | U_{out} | Description |
|----------------------------|-------------|--------------------------|--|
| Closed | Open | Low (switches to GND) | The transducer is OK (Normal operation) |
| Open | Closed | High (switches to $U+$) | The transducer is not OK (Overload mode or supply fault) |

Performance parameters definition

The schematic used to measure all electrical parameters is shown below:



Transducer simplified model

The static model of the transducer at temperature T_A is:

$$I_S = N_P/N_S \cdot I_P + \varepsilon$$

In which

$$\varepsilon = I_{OE} \text{ at } 25^\circ\text{C} + I_{OT}(T_A) + \varepsilon_L \cdot I_{PM} \cdot N_P/N_S$$

Where,

$$I_{OT}(T_A) = TCI_{OE} \cdot |T_A - 25^\circ\text{C}| \cdot I_{PM} \cdot N_P/N_S$$

| | |
|-----------------|--|
| I_S | : secondary current (A) |
| N_P/N_S | : turns ratio (1: N_S) |
| I_P | : primary current (A) |
| I_{PM} | : primary current, measuring range (A) |
| T_A | : ambient operating temperature ($^\circ\text{C}$) |
| I_{OE} | : electrical offset current (A) |
| I_{OT} | : temperature variation of I_{OE} at T_A (A) |
| ε_L | : linearity error |

This is the absolute maximum error. As all errors are independent, a more realistic way to calculate the error would be to use the following formula:

$$\varepsilon = \sqrt{\sum_{i=1}^N \varepsilon_i^2}$$

Linearity

To measure linearity, the primary current (DC) is cycled from 0 to I_P , then to $-I_P$ and back to 0 (equally spaced $I_P/10$ steps). The linearity error ε_L is the maximum positive or negative difference between the measured points and the linear regression line, expressed in parts per million (ppm) of full-scale which corresponds to the maximum measured value.

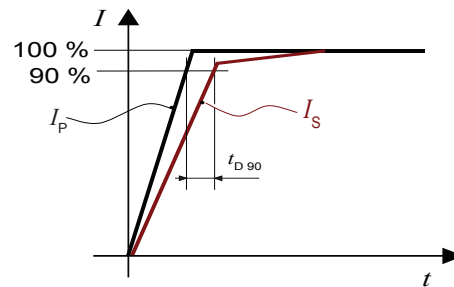
Electrical offset

The electrical offset current I_{OE} is the residual output current when the input current is zero.

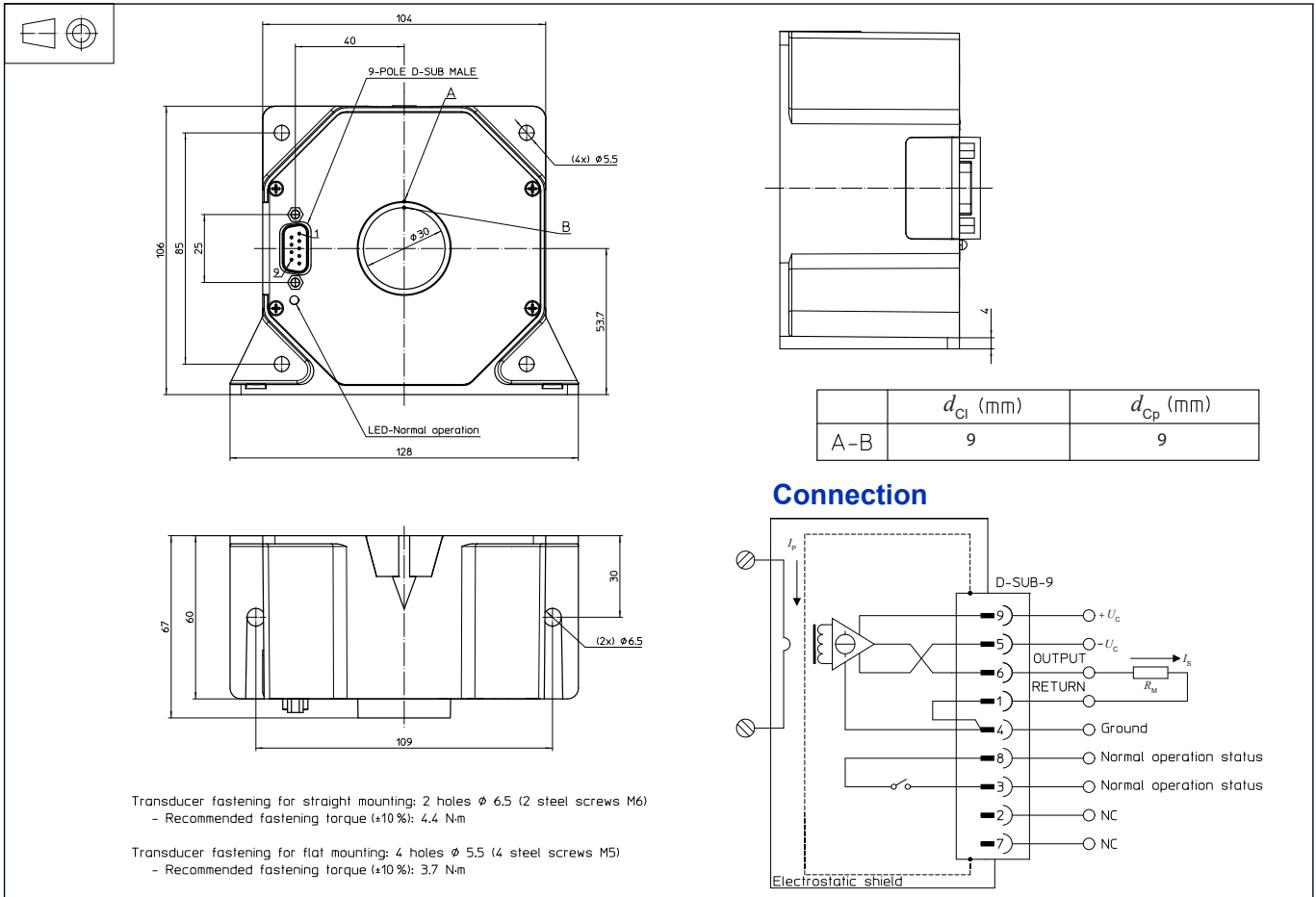
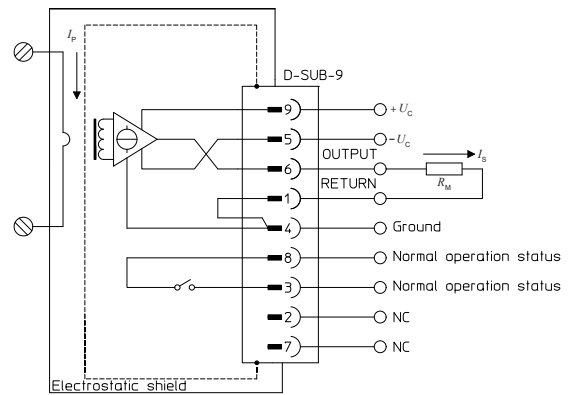
The temperature variation I_{OT} of the electrical offset current I_{OE} is the variation of the electrical offset from 25°C to the considered temperature.

Delay time

The delay time t_{D90} with respect to the primary are shown in the next figure. It slightly depends on the primary current di/dt . It is measured at nominal current.



t_{D90} (delay time @ 90 %)

Dimensions (in mm)

Connection

Connection

- Normal operation status (Pins 3 and 8)
 Normal operation means:
 - $\pm 15\text{ V}$ ($\pm U_c$) present
 - zero detector is working
 - compensation current $\leq 110\%$ of I_{PNDC}
 - green LED indicator is lit.

| Contact (Pins 3 and 8) | Description |
|------------------------|--|
| Closed | The transducer is OK (Normal operation) |
| Open | The transducer is not OK (Overload mode or supply fault) |

Mechanical characteristics

- General tolerance $\pm 0.5\text{ mm}$
- Transducer fastening
 - Straight mounting: 2 holes ϕ 6.5 mm, 2 x M6 steel screws, Recommended fastening torque 4.4 N·m
 - Flat mounting: 4 holes ϕ 5.5 mm, 4 x M5 steel screws, Recommended fastening torque 3.7 N·m
- Connection of secondary on D-SUB-9, connector UNC 4-40
- Primary through hole $\phi \leq 30\text{ mm}$
- All mounting recommendations are given for a standard mounting. Screws with flat and spring washers.

Remarks

- I_s is positive when I_p flows in the direction of arrow
- The secondary cables also have to be routed together all the way
- Pin 4 should be connected to cable and connector shield to maintain lowest output noise
- Maximum temperature of the primary conductor: see [page 3](#)
- Installation of the transducer must be done unless otherwise specified on the datasheet, according to LEM Transducer Generic Mounting Rules. Please refer to LEM document N°ANE120504 available on our Web site: <https://www.lem.com/en/file/3137/download>

IMPORTANT NOTICE

The information in this document is considered accurate and reliable. However, LEM International SA and any company directly or indirectly controlled by LEM Holding SA ("LEM") do not provide any guarantee or warranty, expressed or implied, regarding the accuracy or completeness of this information and are not liable for any consequences resulting from its use. LEM shall not be responsible for any indirect, incidental, punitive, special, or consequential damages (including, but not limited to, lost profits, lost savings, business interruption, costs related to the removal or replacement of products, or rework charges) regardless of whether such damages arise from tort (including negligence), warranty, breach of contract, or any other legal theory.

LEM reserves the right to update the information in this document, including specifications and product descriptions, at any time without prior notice. Information in this document replaces any previous versions of this document. No license to any intellectual property is granted by LEM through this document, either explicitly or implicitly. Any Information and product described herein is subject to export control regulations.

LEM products may possess either unidentified or documented vulnerabilities. It is the sole responsibility of the purchaser to design and operate their applications and products in a manner that mitigates the impact of these vulnerabilities. LEM disclaims any liability for such vulnerabilities. Customers must select products with security features that best comply with applicable rules, regulations, and standards for their intended use. The purchaser is responsible for making final design decisions regarding its products and for ensuring compliance with all legal, regulatory, and security-related requirements, irrespective of any information or support provided by LEM.

LEM products are not intended, authorized, or warranted for use in life support, life-critical, or safety-critical systems or equipment, nor in applications where failure or malfunction of an LEM product could result in personal injury, death, or significant property or environmental damage. LEM and its suppliers do not assume liability for the inclusion and/or use of LEM products in such equipment or applications; thus, this inclusion and/or use is at the purchaser's own and sole risk. Unless explicitly stated that a specific LEM product is automotive qualified, it should not be used in automotive applications. LEM does not accept liability for the inclusion and/or use of non-automotive qualified products in automotive equipment or applications.

Applications that are described herein are for illustrative purposes only. LEM makes no representation or warranty that LEM products will be suitable for a particular purpose, a specified use or application. The purchaser is solely responsible for the design and operation of its applications and devices using LEM products, and LEM accepts no liability for any assistance with any application or purchaser product design. It is purchaser's sole responsibility to determine whether the LEM product is suitable and fit for the purchaser's applications and products planned, as well as for the planned application and use of purchaser's third-party customer(s).

Stressing and using LEM products at or above limiting values will cause permanent damage to the LEM product and potentially to any device embedding or operating with LEM product. Limiting values are stress ratings only and operation of the LEM product at or above conditions and limits given in this document is not warranted. Continuous or repeated exposure to limiting values will permanently and irreversibly affect the quality and reliability of the LEM product.

LEM products are sold subject to the general terms and conditions of commercial sale, as published at www.lem.com unless otherwise agreed in a specific written agreement. LEM hereby expressly rejects the purchaser's general terms and conditions for purchasing LEM products by purchaser. Any terms and conditions contained in any document issued by the purchaser either before or after issuance of any document by LEM containing or referring to the general terms and conditions of sale are explicitly rejected and disregarded by LEM, and the document issued by the purchaser is wholly inapplicable to any sale or licensing made by LEM and is not binding in any way on LEM.

© 2025 LEM INTERNATIONAL SA – All rights reserved