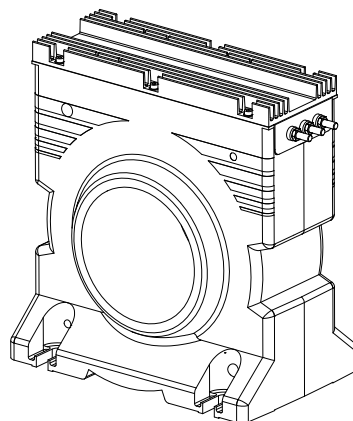


For the electronic measurement of current: DC, AC, pulsed..., with galvanic separation between the primary and the secondary circuit.



### Features

- Bipolar and insulated current measurement
- Current output
- Closed loop (compensated) current transducer using the Hall effect
- Panel mounting.

### Special features

- $U_d = 13.5\text{ kV}$
- $T_A = 0\text{ °C} \dots 50\text{ °C}$ .

### Advantages

- Excellent accuracy
- Very good linearity
- Low temperature drift
- Optimized delay time
- Wide frequency bandwidth
- No insertion losses
- High immunity to external interference
- Current overload capability.

### Applications

- AC variable speed and servo motor drives
- Static converters for DC motor drives
- Battery supplied applications
- Uninterruptible Power Supplies (UPS)
- Switched Mode Power Supplies (SMPS)
- Power supplies for welding applications.

### Standards

- IEC 61010-1: 2016
- EN 61326-1: 2012.

### Application Domain

- Industrial.

## Safety



### Caution

If the device is used in a way that is not specified by the manufacturer, the protection provided by the device may be compromised. Always inspect the electronics unit and connecting cable before using this product and do not use it if damaged. Mounting assembly shall guarantee the maximum primary conductor temperature, fulfill clearance and creepage distance, minimize electric and magnetic coupling, and unless otherwise specified can be mounted in any orientation.



### Caution, risk of electrical shock

This transducer must be used in limited-energy secondary circuits SELV according to IEC 61010-1, in electric/electronic equipment with respect to applicable standards and safety requirements in accordance with the manufacturer's operating specifications.

Use caution during installation and use of this product; certain parts of the module can carry hazardous voltages and high currents (e.g. power supply, primary conductor).

Ignoring this warning can lead to injury and/or cause serious damage.

De-energize all circuits and hazardous live parts before installing the product.

All installations, maintenance, servicing operations and use must be carried out by trained and qualified personnel practicing applicable safety precautions.

This transducer is a build-in device, whose hazardous live parts must be inaccessible after installation.

This transducer must be mounted in a suitable end-enclosure.

Besides make sure to have a distance of minimum 30 mm between the primary terminals of the transducer and other neighboring components.

Main supply must be able to be disconnected.

Always inspect the current transducer for damage before using this product.

Never connect or disconnect the external power supply while the primary circuit is connected to live parts.

Never connect the output to any equipment with a common mode voltage to earth greater than 30 V.

Always wear protective clothing and gloves if hazardous live parts are present in the installation where the measurement is carried out.

This transducer is a built-in device, not intended to be cleaned with any product. Nevertheless if the user must implement cleaning or washing process, validation of the cleaning program has to be done by himself.



### ESD susceptibility

The product is susceptible to be damaged from an ESD event and the personnel should be grounded when handling it.

Do not dispose of this product as unsorted municipal waste. Contact a qualified recycler for disposal.

## Absolute maximum ratings

| Parameter                                      | Symbol          | Unit | Value      |
|--|-----------------|------|------------|
| Maximum supply voltage (working) (0 ... 50 °C) | $\pm U_{C\max}$ | V    | $\pm 25.2$ |
| Maximum primary conductor temperature          | $T_{B\max}$     | °C   | 100        |

Absolute maximum ratings apply at 25 °C unless otherwise noted.

Stresses above these ratings may cause permanent damage.

Exposure to absolute maximum ratings for extended periods may degrade reliability.

## Environmental and mechanical characteristics

| Parameter                     | Symbol           | Unit | Min | Typ  | Max                | Comment        |
|-------------------------------|------------------|------|-----|------|--------------------|----------------|
| Ambient operating temperature | $T_A$            | °C   | 0   |      | 50                 |                |
| Ambient storage temperature   | $T_{A\text{st}}$ | °C   | -40 |      | 85                 |                |
| Relative humidity             | $RH$             | %    | 20  |      | 80                 | non-condensing |
| Mass                          | $m$              | g    |     | 6000 |                    |                |
| Altitude                      |                  | m    |     |      | 2000 <sup>1)</sup> |                |

**Note:** <sup>1)</sup> Insulation coordination at 2000 m.

## Insulation coordination

| Parameter   | Symbol    | Unit | ≤ Value | Comment   |
|---|-----------|------|---------|---|
| RMS voltage for AC insulation test, 50 Hz, 1 min    | $U_d$     | kV   | 13.5    | Between primary and secondary   |
| Impulse withstand voltage 1.2/50 μs                 | $U_{Ni}$  | kV   | 17.7    | According to IEC 61010-1  |
| Partial discharge RMS test voltage ( $q_m < 10$ pC) | $U_{PDt}$ | V    | 5760    | Test carried out with a non insulated bar and completely filling the primary hole.<br>According to IEC 61287-1 (not performed on serial test) |
| Clearance (pri. - sec.)                             | $d_{Cl}$  | mm   | 69.8    | Shortest distance through air   |
| Creepage distance (pri. - sec.)                     | $d_{Cp}$  | mm   | 75.8    | Shortest path along device body   |
| Case material                                       | -         | -    | V0      | According to UL 94  |
| Comparative tracking index                          | $CTI$     |      | 600     | Material group I  |
| Application example<br>RMS voltage line-to-neutral  |           | V    | > 1500  | Basic insulation according to IEC 60664-1 CAT III, PD2  |
| Application example<br>RMS voltage line-to-neutral  |           | V    | 1000    | Reinforced insulation according to IEC 60664-1 CAT III, PD2   |

## Electrical data

At  $T_A = 25\text{ °C}$  unless otherwise noted (see Min, Max, typ, definition paragraph).

| Parameter  | Symbol                     | Unit          | Min        | Typ                         | Max        | Comment   |
|--|----------------------------|---------------|------------|-----------------------------|------------|---|
| Primary nominal AC RMS current (continuous)                | $I_{P\text{NAC}}$          | A             | -4000      |                             | 4000       | $f \leq 100\text{ Hz}$  |
| Primary current, measuring range                           | $I_{PM}$                   | A             | -5900      |                             | 5900       | With $\pm U_C = \pm 24\text{ V}$ (-5 %), $T_A = 50\text{ °C}$ , $R_M = 4.28\text{ }\Omega$ ; for other conditions, see <a href="#">figure 1</a> |
| Measuring resistance                                       | $R_M$                      | $\Omega$      | 0          |                             |            | see <a href="#">figure 1</a>  |
| Secondary nominal RMS current                              | $I_{SN}$                   | mA            | -800       |                             | 800        |   |
| Resistance of secondary winding                            | $R_S$                      | $\Omega$      | 11.4       | 11.5                        | 11.6       | @ $25\text{ °C}$ <sup>1)</sup>  |
| Number of secondary turns                                  | $N_S$                      |               |            | 5000                        |            |   |
| DC supply voltage $\equiv$                                 | $U_C$                      | V             | $\pm 22.8$ | $\pm 24$                    | $\pm 25.2$ |   |
| DC current consumption $\equiv$                            | $I_C$                      | mA            | 25         | $27 + I_S \times N_P / N_S$ | 29         | @ $U_C = \pm 24\text{ V}$ @ $25\text{ °C}$  |
| Total error  | $\varepsilon_{\text{tot}}$ | %             |            |                             | $\pm 0.5$  | @ $25\text{ °C}$ (@ $I_{PN}$ )  |
|  |                            |               |            |                             | $\pm 0.8$  | @ $0 \dots 50\text{ °C}$ (@ $I_{PN}$ )  |
| Electrical offset current                                  | $I_{OE}$                   | mA            |            |                             | $\pm 0.8$  | @ $25\text{ °C}$ (@ $I_P = 0$ )   |
| Temperature variation of $I_{OE}$                          | $I_{OT}$                   | mA            |            | $\pm 0.6$                   | $\pm 0.8$  | referred to $25\text{ °C}$  |
| Magnetic offset current                                    | $I_{OM}$                   | mA            |            | 0.2                         |            | after $3 \times I_{PN}$ @ $25\text{ °C}$  |
| Linearity error  | $\varepsilon_L$            | % of $I_{PN}$ |            |                             | $< 0.1$    | @ $25\text{ °C}$  |
|  |                            |               |            |                             | $< 0.2$    | @ $0 \dots 50\text{ °C}$  |
| RMS noise 1 Hz ... 10 MHz referred to primary              | $I_{no}$                   | mA            |            | 90                          |            | see <a href="#">figure 4</a>  |
| Delay time to 10 % of the final output value $I_{PN}$ step | $t_{D10}$                  | $\mu\text{s}$ |            | $< 1$                       |            | With $di/dt > 50\text{ A}/\mu\text{s}$<br>See <a href="#">figure 2</a>  |
| Delay time to 90 % of the final output value $I_{PN}$ step | $t_{D90}$                  | $\mu\text{s}$ |            | $< 1$                       |            | With $di/dt > 50\text{ A}/\mu\text{s}$<br>See <a href="#">figure 2</a>  |
| Frequency bandwidth (-1 dB)                                | $BW$                       | kHz           |            | 10                          |            | With $\pm U_C = \pm 24\text{ V}$ , $T_A = 25\text{ °C}$ , primary return twisted on back side; see <a href="#">figure 5</a>                     |
| Frequency bandwidth (-3 dB)                                |                            |               |            | 130                         |            |   |

**Note:** <sup>1)</sup>  $R_S(T_A) = R_S \times (1 + 0.004 \times (T_A + \Delta\text{Temp} - 25))$  estimated temperature increase @  $I_{PN}$  is  $\Delta\text{Temp} = 15\text{ °C}$ .

## Definition of typical, minimum and maximum values

Minimum and maximum values for specified limiting and safety conditions have to be understood as such as well as values shown in "typical" graphs.

On the other hand, measured values are part of a statistical distribution that can be specified by an interval with upper and lower limits and a probability for measured values to lie within this interval.

Unless otherwise stated (e.g. "100 % tested"), the LEM definition for such intervals designated with "min" and "max" is that the probability for values of samples to lie in this interval is 99.73 %.

For a normal (Gaussian) distribution, this corresponds to an interval between -3 sigma and +3 sigma. If "typical" values are not obviously mean or average values, those values are defined to delimit intervals with a probability of 68.27 %, corresponding to an interval between -sigma and +sigma for a normal distribution.

Typical, maximal and minimal values are determined during the initial characterization of the product.

## Typical performance characteristics

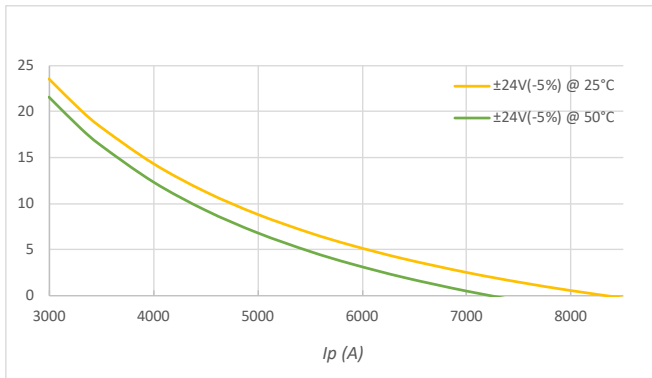


Figure 1: Maximum measuring resistance

$$R_{Mmax} = N_s \times \frac{U_{Cmin} - 0.7V}{I_p} - R_{Smax}$$

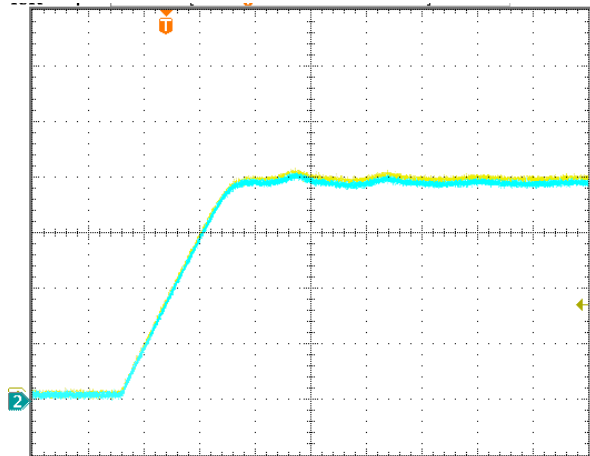


Figure 2: ch1:  $I_p = 4000$  A/ch2:  $I_s = 0.2$  A/div,  $di/dt$  50 A/ $\mu$ s according to the report CA031109 (test done on LT 4000-T/SP42)

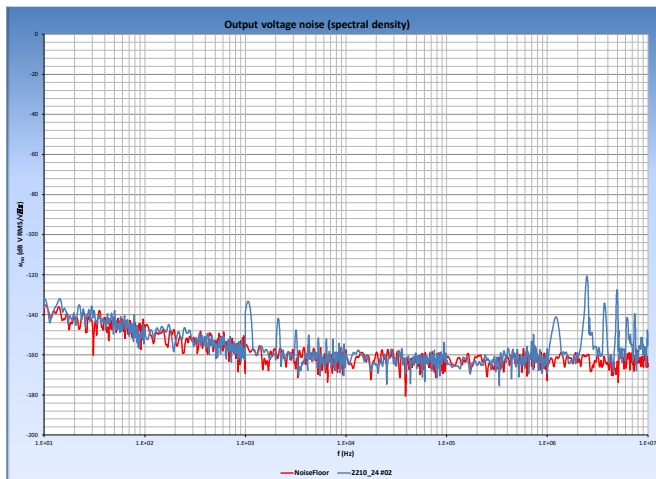


Figure 3: Typical output noise voltage spectral density with  $R_M = 1$  Ohm (test done on LT 4000-S/SP35)

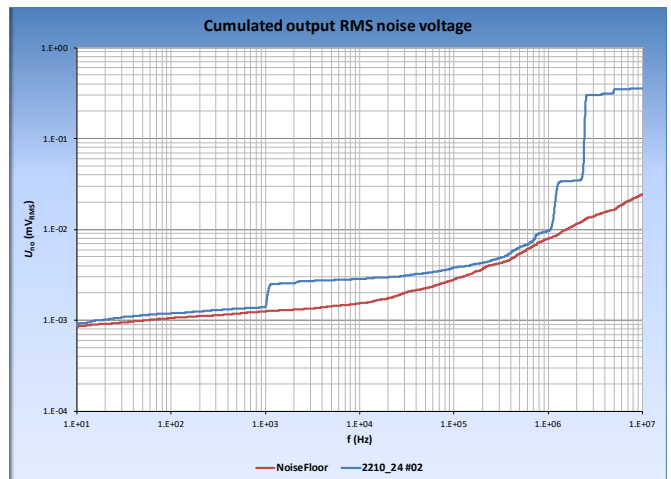


Figure 4: Typical output RMS noise current with  $R_M = 1$  Ohm (primary referred) (test done on LT 4000-S/SP35)

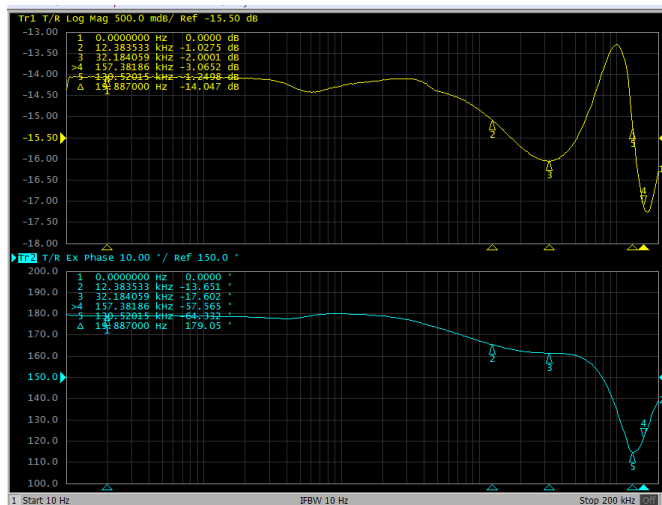


Figure 5: Frequency bandwidth

## Terms and definitions

### Ampere-turns and amperes

The transducer is sensitive to the primary current linkage  $\Theta_p$  (also called ampere-turns).

$$\Theta_p = N_p \cdot I_p$$

Where  $N_p$  is the number of primary turn.

Cautions: As most applications will use the transducer with only one single primary turn ( $N_p = 1$ ), much of this datasheet is written in terms of primary current instead of current linkages. However, the ampere-turns (A) unit is used to emphasis that current linkages are intended and applicable.

### Simplified transducer model

The static model of the transducer with current output at temperature  $T_A$  is:

$$I_s = \Theta_p \cdot (1 + \varepsilon)$$

In which (referred to primary):

$$\varepsilon \cdot \Theta_p = I_{OE} + I_{OT} + \varepsilon_L(\Theta_{Pmax}) \cdot \Theta_{Pmax} + I_{OM}$$

$\Theta_p = N_p \cdot I_p$  : primary current linkage (A)

$\Theta_{Pmax}$  : maximum primary current linkage applied to the transducer

$I_s$  : secondary current (A)

$T_A$  : ambient operating temperature (°C)

$I_{OE}$  : electrical offset current (A)

$I_{OM}$  : magnetic offset current (A)

$I_{OT}$  : temperature variation of  $I_{OE}$  (A)

$\varepsilon_L(\Theta_{Pmax})$  : linearity error for  $\Theta_{Pmax}$

This model is valid for primary ampere-turns  $\Theta_p$  between  $-\Theta_{Pmax}$  and  $+\Theta_{Pmax}$  only.

This is the absolute maximum error. As all errors are independent, a more realistic way to calculate the error would be to use the following formula:

### Total error referred to primary

The total error  $\varepsilon_{tot}$  is the error at  $\pm I_{PN}$ , relative to the rated value  $I_{PN}$ .

$$\varepsilon = \sqrt{\sum_{i=1}^N \varepsilon_i^2}$$

It includes all errors mentioned above

- the electrical offset  $I_{OE}$
- the magnetic offset  $I_{OM}$
- the linearity error  $\varepsilon_L$  (to  $I_{PN}$ ).

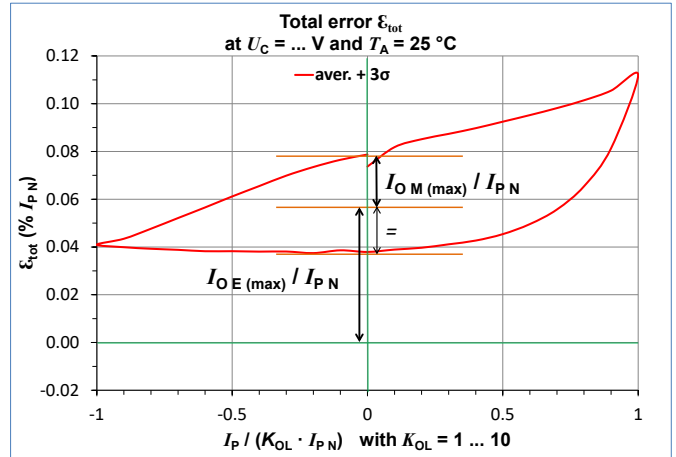


Figure 6: Total error  $\varepsilon_{tot}$

### Electrical offset referred to primary

Using the current cycle shown in figure 6 the electrical offset current  $I_{OE}$  is the residual output referred to primary when the input current is zero.

$$I_{OE} = \frac{I_{P(3)} + I_{P(5)}}{2}$$

The temperature variation  $I_{OT}$  of the electrical offset current  $I_{OE}$  is the variation of the electrical offset from 25 °C to the considered temperature.

$$I_{OT}(T) = I_{OE}(T) - I_{OE}(25\text{ °C})$$

### Magnetic offset referred to primary

The magnetic offset current  $I_{OM}$  is the consequence of a current on the primary side ("memory effect" of the transducer's ferro-magnetic parts). It is measured using the following primary current cycle.  $I_{OM}$  depends on the current value  $I_P \geq I_{PN}$ .

$K_{OL}$ : Overload factor

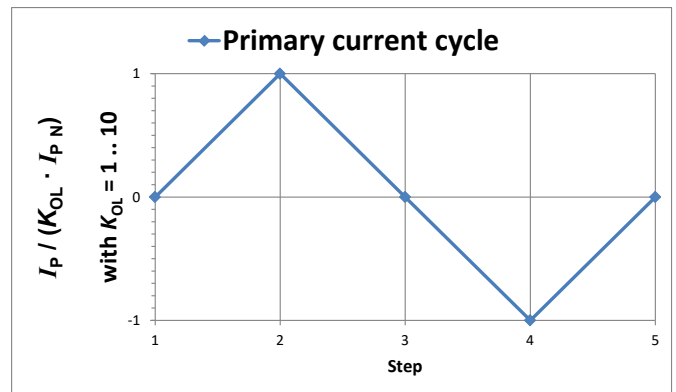


Figure 7: Current cycle used to measure magnetic and electrical offset (transducer supplied)

$$I_{OM} = \frac{I_{P(3)} - I_{P(5)}}{2}$$

## Sensitivity and linearity

To measure sensitivity and linearity, the primary current (DC) is cycled from 0 to  $I_P$ , then to  $-I_P$  and back to 0 (equally spaced  $I_P/10$  steps). The linearity error  $\varepsilon_L$  is the maximum positive or negative difference between the measured points and the linear regression line, expressed in % of  $I_{PN}$ .

## Delay times

The delay time  $t_{D10}$  @ 10 % and the delay time  $t_{D90}$  @ 90 % with respect to the primary are shown in the next figure. Both slightly depend on the primary current  $di/dt$ . They are measured at nominal current.

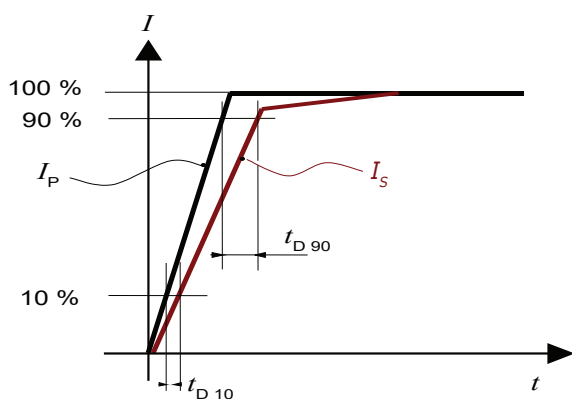
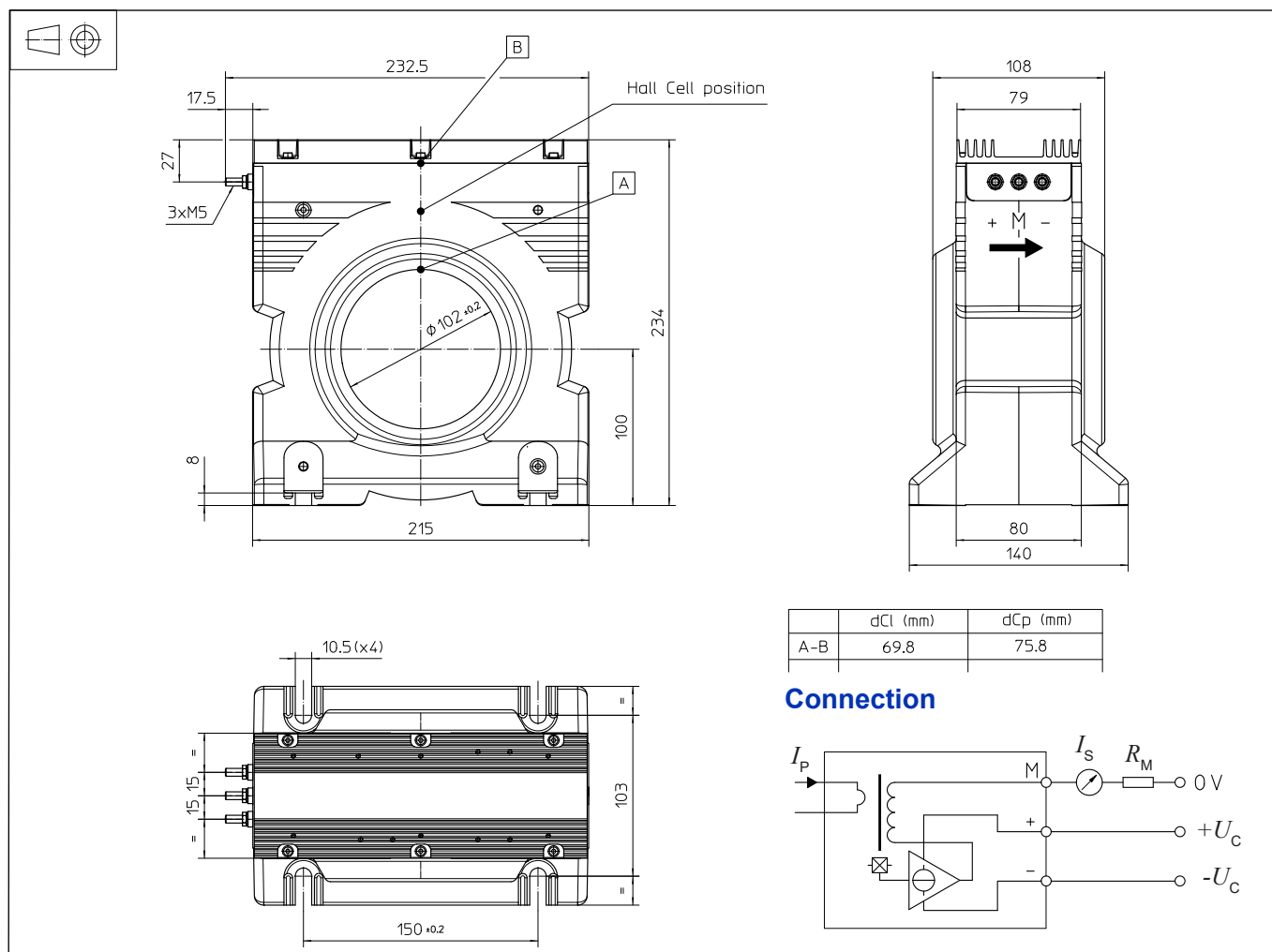
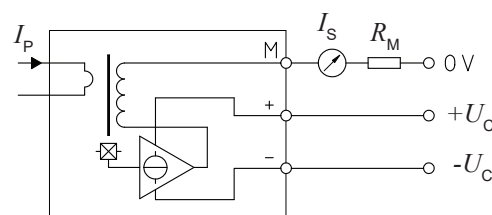


Figure 8:  $t_{D10}$  (delay time @ 10 %) and  $t_{D90}$  (delay time @ 90 %).

## Dimensions (in mm)



## Connection



## Mechanical characteristics

- General tolerance  $\pm 1$  mm
- Transducer fastening 4 notches  $\varnothing 10.5$  mm  
4 x M10 steel screws  
Recommended fastening torque 11.5 N·m ( $\pm 10$  %)
- Connection of primary  $\varnothing 102$  mm
- Connection of secondary M5 threaded studs  
Recommended fastening torque 2.2 N·m ( $\pm 10$  %)

## Remarks

- $I_S$  is positive when  $I_P$  flows in the direction of arrow.
- The secondary cables also have to be routed together all the way.
- Dynamics performances "delay time" are best with a single bar completely filling the primary hole.
- Installation of the transducer must be done, unless otherwise specified on the datasheet, according to LEM Transducer Generic Mounting Rules. Please refer to LEM document N°ANE120504 available on our Web site:  
<https://www.lem.com/en/file/3137/download/>



## IMPORTANT NOTICE

The information in this document is considered accurate and reliable. However, LEM International SA and any company directly or indirectly controlled by LEM Holding SA ("LEM") do not provide any guarantee or warranty, expressed or implied, regarding the accuracy or completeness of this information and are not liable for any consequences resulting from its use. LEM shall not be responsible for any indirect, incidental, punitive, special, or consequential damages (including, but not limited to, lost profits, lost savings, business interruption, costs related to the removal or replacement of products, or rework charges) regardless of whether such damages arise from tort (including negligence), warranty, breach of contract, or any other legal theory.

LEM reserves the right to update the information in this document, including specifications and product descriptions, at any time without prior notice. Information in this document replaces any previous versions of this document. No license to any intellectual property is granted by LEM through this document, either explicitly or implicitly. Any Information and product described herein is subject to export control regulations.

LEM products may possess either unidentified or documented vulnerabilities. It is the sole responsibility of the purchaser to design and operate their applications and products in a manner that mitigates the impact of these vulnerabilities. LEM disclaims any liability for such vulnerabilities. Customers must select products with security features that best comply with applicable rules, regulations, and standards for their intended use. The purchaser is responsible for making final design decisions regarding its products and for ensuring compliance with all legal, regulatory, and security-related requirements, irrespective of any information or support provided by LEM.

LEM products are not intended, authorized, or warranted for use in life support, life-critical, or safety-critical systems or equipment, nor in applications where failure or malfunction of an LEM product could result in personal injury, death, or significant property or environmental damage. LEM and its suppliers do not assume liability for the inclusion and/or use of LEM products in such equipment or applications; thus, this inclusion and/or use is at the purchaser's own and sole risk. Unless explicitly stated that a specific LEM product is automotive qualified, it should not be used in automotive applications. LEM does not accept liability for the inclusion and/or use of non-automotive qualified products in automotive equipment or applications.

Applications that are described herein are for illustrative purposes only. LEM makes no representation or warranty that LEM products will be suitable for a particular purpose, a specified use or application. The purchaser is solely responsible for the design and operation of its applications and devices using LEM products, and LEM accepts no liability for any assistance with any application or purchaser product design. It is purchaser's sole responsibility to determine whether the LEM product is suitable and fit for the purchaser's applications and products planned, as well as for the planned application and use of purchaser's third-party customer(s).

Stressing and using LEM products at or above limiting values will cause permanent damage to the LEM product and potentially to any device embedding or operating with LEM product. Limiting values are stress ratings only and operation of the LEM product at or above conditions and limits given in this document is not warranted. Continuous or repeated exposure to limiting values will permanently and irreversibly affect the quality and reliability of the LEM product.

LEM products are sold subject to the general terms and conditions of commercial sale, as published at [www.lem.com](http://www.lem.com) unless otherwise agreed in a specific written agreement. LEM hereby expressly rejects the purchaser's general terms and conditions for purchasing LEM products by purchaser. Any terms and conditions contained in any document issued by the purchaser either before or after issuance of any document by LEM containing or referring to the general terms and conditions of sale are explicitly rejected and disregarded by LEM, and the document issued by the purchaser is wholly inapplicable to any sale or licensing made by LEM and is not binding in any way on LEM.

© 2025 LEM INTERNATIONAL SA – All rights reserved