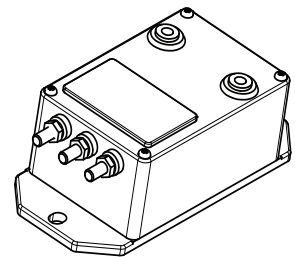


Current Transducer LV 100/SP51

For the electronic measurement of current: DC, AC, pulsed..., with galvanic separation between the primary circuit and the secondary circuit.



$$I_{PN} = 10 \text{ mA}$$



Electrical data

I_{PN}	Primary nominal RMS current	10	mA
I_{PM}	Primary current, measuring range	0 ... ± 20	mA
R_M	Measuring resistance	$R_{M \min}$ $R_{M \max}$	
	with $\pm 15 \text{ V}$	@ $\pm 10 \text{ mA}_{\max}$	0 200 Ω
		@ $\pm 20 \text{ mA}_{\max}$	0 70 Ω
	with $\pm 24 \text{ V}$	@ $\pm 10 \text{ mA}_{\max}$	100 360 Ω
		@ $\pm 20 \text{ mA}_{\max}$	100 150 Ω
I_{SN}	Secondary nominal RMS current	50	mA
N_p / N_s	Turns ratio	10000 : 2000	
S	Sensitivity	5	mA/mA
U_C	Supply voltage ($\pm 5 \%$)	$\pm 15 \dots 24$	V
I_C	Current consumption	38 (@ $\pm 24 \text{ V}$) + I_s	mA

Accuracy - Dynamic performance data

ϵ_{tot}	Total error @ I_{PN} , $T_A = 25^\circ\text{C}$	± 1.0	%
ϵ_L	Linearity error	< 0.1	%
		Typ	Max
I_O	Offset current @ $U_p = 0$, $T_A = 25^\circ\text{C}$		± 0.3 mA
I_{OT}	Temperature variation of I_O	$-25^\circ\text{C} \dots +70^\circ\text{C}$	± 0.2 mA
		$-40^\circ\text{C} \dots -25^\circ\text{C}$, $-70^\circ\text{C} \dots +85^\circ\text{C}$	± 0.4 mA
t_{D90}	Delay time to 90 % of the final output value for U_{PN} step ¹⁾	< 100	μs

General data

T_A	Ambient operating temperature	$-40 \dots +85$	$^\circ\text{C}$
$T_{A \text{st}}$	Ambient storage temperature	$-50 \dots +100$	$^\circ\text{C}$
R_p	Resistance of primary winding	@ $T_A = 70^\circ\text{C}$	1900 Ω
		@ $T_A = 85^\circ\text{C}$	2000 Ω
R_s	Resistance of secondary winding	@ $T_A = 70^\circ\text{C}$	55 Ω
		@ $T_A = 85^\circ\text{C}$	60 Ω
m	Mass	460	g
	Standard ²⁾	EN 50155: 2017	

Notes: ¹⁾ $R_i = 100 \text{ k}\Omega$ (L/R constant, produced by the resistance and inductance of the primary circuit)

²⁾ Additional information available on request.

Features

- Closed loop (compensated) current transducer using the Hall effect
- Insulating plastic case recognized according to UL 94-V0.

Principle of use

- For voltage measurements, a current proportional to the measured voltage must be collected through an external resistor R_i which is selected by the user and installed in series with the primary circuit of the transducer.

Special features

- $T_A = -40^\circ\text{C} \dots +85^\circ\text{C}$
- $U_d = 9 \text{ kV}$
- Secondary connection on M5 threaded studs.

Advantages

- Excellent accuracy
- Very good linearity
- Low temperature drift
- Optimized delay time
- Wide frequency bandwidth
- High immunity to external interference
- Low disturbance in common mode.

Applications

- Single or three phase inverters
- Propulsion and braking choppers
- Propulsion converters
- Auxiliary converters
- Battery chargers.

Application domain

- Railway (fixed installations and onboard).

Current Transducer LV 100/SP51

Insulation coordination

U_d	RMS voltage for AC insulation test, 50 Hz, 1 min	9	kV
		Min	
d_{cp}	Creepage distance	74.45	mm
d_{cl}	Clearance	70	mm
CTI	Comparative tracking index (group IIIa)	225	

Safety

This transducer must be used in limited-energy secondary circuits according to IEC 61010-1.



This transducer must be used in electric/electronic equipment with respect to applicable standards and safety requirements in accordance with the manufacturer's operating instructions.



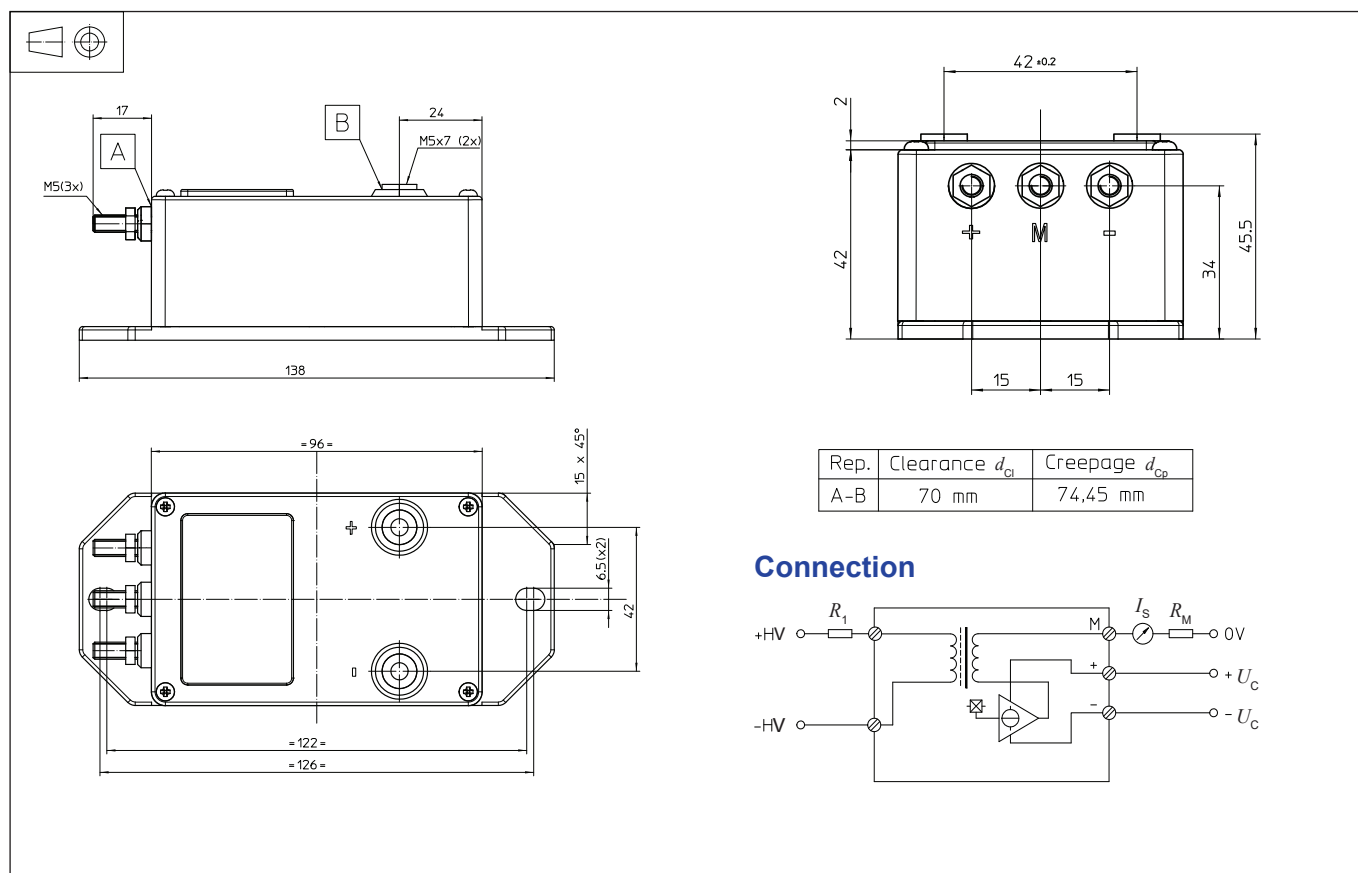
Caution, risk of electrical shock

When operating the transducer, certain parts of the module can carry hazardous voltage (e.g. primary busbar, power supply). Ignoring this warning can lead to injury and/or cause serious damage.

This transducer is a build-in device, whose conducting parts must be inaccessible after installation. A protective housing or additional shield could be used.

Main supply must be able to be disconnected.

Dimensions LV 100/SP51 (in mm)



Mechanical characteristics

- General tolerance ± 0.3 mm
- Transducer fastening
 - 2 holes $\varnothing 6.5$ mm
 - 2 M6 steel screws
 - Recommended fastening torque 5 N·m
- Connection of primary
 - M5 steel screws
 - Recommended fastening torque 2.2 N·m
- Connection of secondary
 - M5 threaded studs
 - Recommended fastening torque 2.2 N·m

Remarks

- I_s is positive when U_p is applied on terminal +HV.
- The primary circuit of the transducer must be linked to the connections where the voltage has to be measured.
- Installation of the transducer must be done unless otherwise specified on the datasheet, according to LEM Transducer Generic Mounting Rules. Please refer to LEM document N°ANE120504 available on our Web site: <https://www.lem.com/en/file/3137/download/>.

Instructions for use of the current transducer model LV 100/SP51

Primary resistor R_1 : the transducer's optimum total error is obtained at the nominal primary current. As far as possible, R_1 should be calculated so that the nominal voltage to be measured corresponds to a primary current of 10 mA.

Example: Voltage to be measured $U_{PN} = 1000$ V

- a) $R_1 = 100$ k Ω / 40 W, $I_p = 10$ mA Total error = ± 0.7 % of U_{PN} (@ $T_A = +25$ °C)
 b) $R_1 = 400$ k Ω / 10 W, $I_p = 2.5$ mA Total error = ± 2.5 % of U_{PN} (@ $T_A = +25$ °C)

Operating range (recommended): taking into account the resistance of the primary windings (which must remain low compared to R_1 in order to keep thermal deviation as low as possible) and the insulation, this transducer is suitable for measuring nominal voltages from 100 to 2500 V.