

**GATEWAY MG-6424**

**APPLICATION NOTE :**

**SERIAL COMMUNICATION**

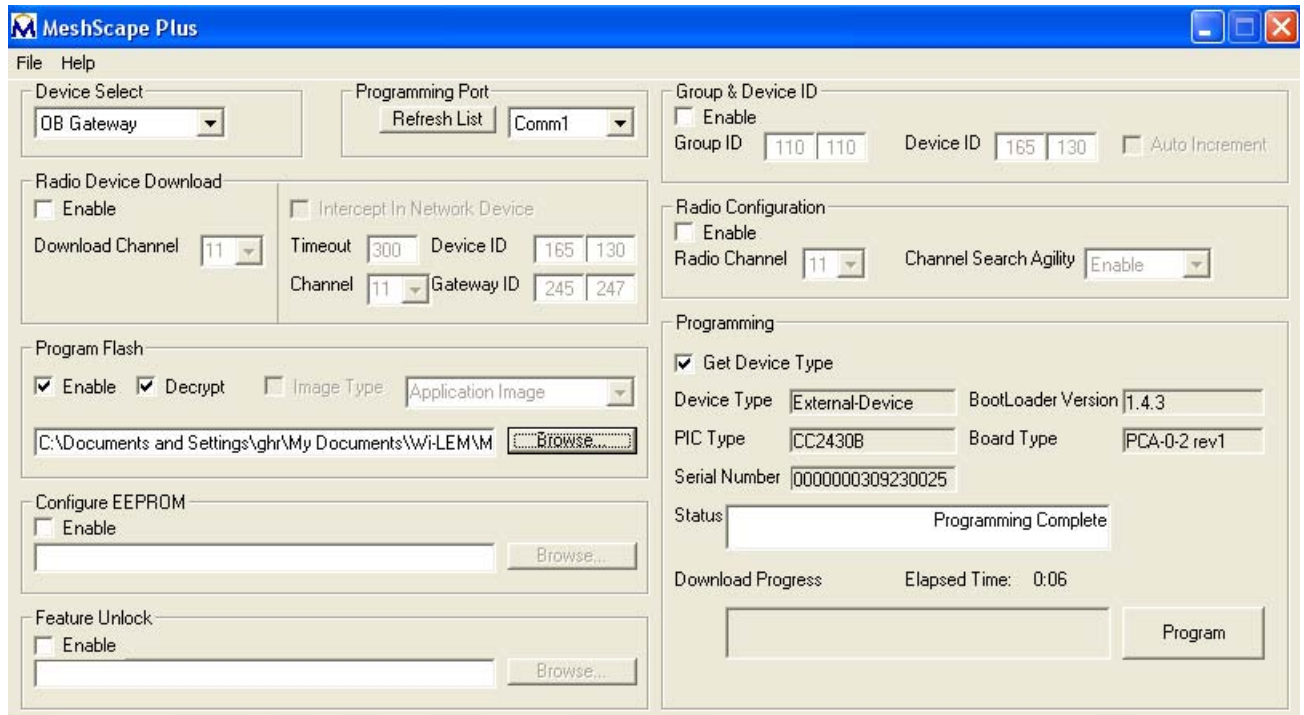
**RS 485 CONFIGURATION**



New MeshGate MG-6424 version, produced in October 2010, date-code: 10277 includes now the RS 485 feature for serial communication (previous MG-6424 version had only RS 232). Default setting is still RS 232 mode, but you can switch to RS 485 on MG-6424 reset.

## RS 485 switching procedure

- Be sure the MG-6424 device supports both modes : RS 232 and RS 485. Series date-code must be **10277** (277<sup>th</sup> day in 2010) or more recent and the internal firmware must be upgraded to version **1.5.15** (or higher). In order to upgrade the MG-6424 firmware with MeshScope Plus Programmer, refer to the specific application note "Reprogram\_MG6424.pdf".



- Power off the device MG-6424 and prepare a specific connection on DB-9 connector in order to set it in RS 485 mode on the next power ON:  
Short-circuit pins 2 - 3 and pins 7 - 8.
- Note the complete DB-9 connection for RS 485 mode:
  - Pin 1 = RS 485 inverting signal
  - Pin 6 = RS 485 non-inverting signal
  - Pin 5 = RS 485 ground
  - Pin 2 short-circuited to pin 3
  - Pin 7 short-circuited to pin 8
- Power ON MG-6424, which is then functioning in the RS 485 communication mode.
- Note that you can still change the baudrate, if required, by configuring EEPROM, selecting the right file with MeshScope Plus Programmer: refer to the specific application note "Reprogram\_MG6424.pdf" or to the general Wi-LEM user guide.